

A DC-DC Converter for standalone applications

S. Pretpal Singh

IETE Member, Guru Nanak Dev. Engineering College, Bidar

Abstract- The conventional energy sources available in the world are diminishing every year creating a huge difference between the demanded energy and the available energy. Efficient utilization of the ample renewable energy resources present in the world can be used to cover this extra demand. With the use of this renewable energy sources the levels of pollution and global warming can be controlled to a lower level. A significant demerit with the renewable energy sources is their fluctuating nature. Hybridization technique is hence utilized to overcome this problem. This allows two sources to meet the load separately or simultaneously depending on the availability. In this paper a double input single output DC-DC converter is presented for stand-alone systems. The topology operates as a bootstrap circuit by employing the charging switches in case of only one input port powering or one input being short circuited and maintains the expected output voltage making the system fault tolerant.

Index Terms- Hybrid system, Multi-input converter, Bootstrap operation, Solar panel, Fuel cell.

I. INTRODUCTION

Rise in the energy demand and limitation in fossil fuels have increased the role of renewable energy resources. Renewable energy sources will have to play a significant role in overcoming these problems. Systems based on petroleum product and fossil fuels will result in environmental pollution and hence global warming. This elevated the need for renewable energy sources which is abundant and environment friendly. Solar energy, wind energy, etc. are capable of supplying energy to meet the power demand. Even though the capital cost and space requirement for such systems are high, the running cost is extremely low. They can be easily utilized in distributed generation, micro grid, standalone systems, rural telephony systems etc. The main disadvantage of such a system is its unpredictable and intermittent nature, i.e., the output from these systems will always be fluctuating and doesn't deliver a constant output.

To overcome this challenge, hybrid renewable energy systems were implemented which club two or more energy resources to produce a constant output. Hybridization improves the efficiency and life of the system and also brings down the storage requirement. However, by combining these two fluctuating sources, the efficiency and reliability of the system can be refined notably. At the same time, the capital cost and complexity can increase as a result of hybridization. Multi input converters (MIC) have a simpler structure, improved power density and lower cost due to sharing of switches and other components [1]-[3]. Dynamic performance can be improved and complex communication among multiple different sources can be avoided due to the unified power management with centralized control. Thus MIC is appropriate for renewable power systems. Isolated [4]-[6] and non-isolated MIC has been developed for DC-DC conversion. Galvanic isolation is used in isolated MICs, but the disadvantage is the larger number of active switches present in it. Non-isolated converters have the advantages of small size, high power density and more efficiency. Based on buck and/or boost converter structures, various non-isolated topologies were developed. A triple input boost DC-DC converter developed in [7] consists of a photovoltaic source, fuel cell and a battery in a unified structure. A buck voltage source cell parallel connected MIC is presented in [8] which can operate in buck, boost or buck-boost mode, but with only any one of the input ports powering. Two-input series connected buck DC-DC converters proposed in [9]-[11] have a simple topology and efficient energy utilization. They can deliver power to the load from two power sources simultaneously or individually. The series-connected two input converter in [10] has one input port connected to a renewable energy source and other to a storage element, used for nanogrid application. Although both individual and simultaneous operations are possible for this converter, when one input source is shut down, the

other port takes up the operation and the output voltage will be less than the existing input voltage. This implies that the converter is not able to maintain the expected output voltage in the one port powering case if the expected output voltage is more than either of two input voltages. Due to the randomness and intermittency of renewable energy sources present as inputs, it is necessary for the converter to be loaded with a flexible compensation program for error free individual operation. A circuit topology was designed in [12] which include a combination of a charging switch and a series connected double input converter (SCDIC). In this circuit, the converter operates in bootstrap mode in the case of one port powering and it meets the expected output voltage. The disadvantage with this topology is that it employs a large number of switches and hence the switching losses will be larger. But this topology has the merit of employing only a single inductor for any number of input ports when compared to parallel boost converters. This advantage will in turn reduce the volume and cost and improve the dynamic response of the system. This paper proposes another series connected double input converter with reduced number of switches and possessing all the advantage of the circuit presented in [12]. With the presence of a blocking diode, the chance of fault due to a short circuited input can be ruled out. In such a case, the short circuit input port will be separated from the converter and the port will be powered by bootstrap operation. The paper consists of four sections. After introduction in section I, the circuit features, principle and modes of operation will be described in section II. Section III presents the simulation model and results of the converter and section IV concludes the paper.

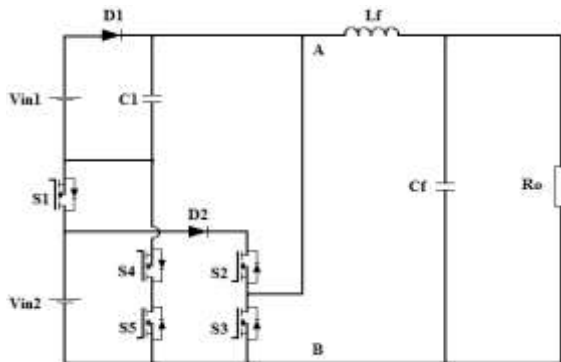


Fig-1: Circuit diagram of the hybrid DC-DC converter for standalone applications

State I: (S2, S4, S5 ON, S1, S3 OFF)

Vin2 charges the capacitor C1 through the switches S2, S4 and S5. Now the voltage across the points A and B (v_{AB}) will be V_{in2} and it is below V_o . Now the voltage appearing across the inductor L_f is negative and thereby the current i_{L_f} decreases. The power to load is supplied alone by V_{in2} in this state.

State II: (S1 ON, S2, S3, S4, S5 OFF)

Vin2 is now in series with the bootstrap capacitor C1. Now the voltage across the points A and B (v_{AB}) will be $2V_{in2}$ and it is above V_o . This makes the voltage across the inductor L_f positive and thereby the inductor current i_{L_f} rises.

State III: (S1 ON, S2, S3, S4, S5 OFF)

Sources V_{in1} and V_{in2} connected in series during this state to deliver the power to the load. The voltage across the points A and B (v_{AB}) will be $V_{in1}+V_{in2}$ and it is more than V_o . Now the voltage appearing across the inductor L_f is $(V_{in1}+V_{in2}-V_o)$ and thereby the current i_{L_f} increases linearly.

State IV: (S4, S5 ON, S1, S2, S3 OFF)

Input source V_{in1} only deliver the power to the load. The voltage across the points A and B will be V_{in1} and it is more than V_o . Now the voltage appearing across the inductor L_f is $(V_{in1} - V_o)$ and thereby the current i_{L_f} increases.

State V: (S2 ON, S1, S3, S4, S5 OFF)

Input source V_{in2} only supplies the power to the load. The voltage across the points A and B will be V_{in2} and it is less than V_o . Now the voltage appearing across the inductor L_f is $(V_{in2}-V_o)$ and thereby the current i_{L_f} reduces.

State VI: (S3 ON, S1, S2, S4, S5 OFF)

Inductor current i_{L_f} freewheels through the switch S3 during this state. The voltage across the points A and B will be zero. The current i_{L_f} decreases.

II. HYBRID DC-DC CONVERTER

A circuit diagram of the hybrid energy system is shown in figure 3, where one of the inputs is connected to the PV array and the other input is connected to a fuel cell. V_{in1} and V_{in2} are the two input source voltages. C1 is the bootstrap capacitor and is connected across V_{in1} . D1 is the blocking diode and it separates a short circuited input source from the converter. Switches S4 and S5 are the charging switches during bootstrap operation. L_f is the filter inductor, C_f is the filter capacitor and R_o is

the load resistor. All the switches in the converter are MOSFETs. This configuration allows both individual and simultaneous operation of the converters. So the circuit can operate in three modes depending on the available inputs. The circuit has 6 states of operation. When both sources are unavailable the entire circuit will be turned off.

Although modes I and II can occur in a practical situation, mode III has least chances to occur. Figure 1 shows the circuit diagram of the converter. States 1 and 2 is during the bootstrap operation mode, i.e., during the individual operation of V_{in2} . Rest of the states from 3-6 occurs at the remaining modes, i.e., during individual operation of V_{in1} or during simultaneous operation. The expected output voltage is kept above either of the two input voltages. Take $V_{in1} > V_o > V_{in2}$.

III. CONCLUSION

The hybrid DC-DC converter for standalone applications is a simple and robust topology to solve the problems related to renewable energy source and ensure a constant output voltage. With the help of bootstrap operation, the fuel cell port can charge the renewable energy port if the renewable energy source is powered off from the circuit. This circuit contains only a single inductor and there is no need for extra inductors while adding more input ports. This reduces the size and cost of the converter. Power density is improved and a good dynamic response is possible with this circuit. It is highly efficient during simultaneous and individual operation of the converter.

REFERENCES

- [1] K. Jin, X. Ruan, M. Yang and M. Xu, "A hybrid fuel cell power system," in *IEEE Transactions on Industrial Electronics*, vol. 56, no. 4, pp. 1212–1222, Apr.2009.
- [2] W. Jiang and B. Fahimi, "Active current sharing and source management in fuel-battery hybrid power system," in *IEEE Transactions on Industrial Electronics*, vol. 57, no. 2, pp. 752–761, Feb.2010.
- [3] L. Khanh, J. Seo, Y. Kim and D. Won, "Power management strategies for a grid connected PV-FC hybrid system," in *IEEE Transactions on Power Delivery*, vol. 25, no. 3, pp. 1874–1882, Jul.2010.
- [4] J. L. Duarte, M. A. M. Hendrix and M. G. Simoes, "Three-port bidirectional converter for hybrid fuel cell systems," in *IEEE Transactions on Power Electronics*, vol. 22, no. 2, pp.480–487, Mar. 2012.
- [5] C. Zhao, S.D. Round, and W. Johann, "An isolated three-port bidirectional DC-DC converter with decoupled power flow management", in *IEEE Transactions on Power Electronics*, vol. 23, no. 5, pp. 2443–2453, Sep.2008.
- [6] M. Sarhangzadeh, S. H. Hosseini, M. B. B. Sharifian, and G. B. Gharehpetian, "Multiinput direct DC-AC converter with high-frequency link for clean power generation systems," in *IEEE Transactions on Power Electronics*, vol. 26, no. 6, pp. 1777–1789, Jun.2011.
- [7] F. Nejabatkhah, S. Danyali, S. H. Hosseini, M. Sabahi, and S. M. Niapour, "Modeling and control of a new three-input dc-dc boost converter for hybrid PV/FC/battery power system, " in *IEEE Transactions on Power Electronics*, vol. 27, no. 5, pp. 2309–2324, May 2012.