

Planning Proposal for Beach Development, Case Study of Suvali Beach

Patel Samarth¹, Singh Manish², Vanzara Dharmesh³, Mr. Jainil M. Master⁴

^{1,2,3}B.Tech Student, Bhagwan Mahavir College of Engineering and Technology, Surat, India

Assistant Professor at Bhagwan Mahavir College of Engineering and Technology, Surat, India

Abstract- In India there are many developed beaches such as beaches in GOA, CHENNAI and MUMBAI. However the need of developing the beach in Gujarat is rising considerably.

As the Surat is in the phase of entering the SMART CITY it becomes necessary to have a developed beach as the tourism place. Therefore the government will soon undertake development of over dozen beaches along, the 1600 km coastline of Gujarat.

Suvali, near Surat district will be amongst the first beaches to be developed by the state, "Suvali alone is pegged to attract investments of Rs 5,000 crore. The model of development is not yet fixed" claimed by state tourism minister Jay Narayan Vyas. Therefore it is preferable to develop Suvali beach as this beach is having sand rather than mud and suitable climatic conditions. Moreover it is surrounded by numbers of factories such as Larsen and Turbo and though it is still undeveloped. As well as this beach lacks the public protection facility.

Thus, we selected the project of "PLANNING PROPOSAL FOR BEACH DEVELOPMENT, CASE STUDY OF SUVALI BEACH".

I. INTRODUCTION

1. Beach Development:

Ocean and Great Lakes beaches are some of the most popular destinations in India for both locals and tourists.

A place that enjoy is the beach. It is seen as a place of relaxation because it is normally quiet and peaceful there. To look around you and see the beauty of Mother Nature at its finest. The majority of people you ask will say that it is one of their favourite vacation destinations, not only for the beauty and relaxation but for the sheer entertainment.

A beach is a landform alongside a body of water which consists of loose particles. The particles composing a beach are typically made from rock, such as sand, gravel, shingle, pebbles.

In India there are many developed beaches such as beaches in GOA, CHENNAI and MUMBAI. However the need of developing the beach in Gujarat is rising considerably.

Beaches attract tourists/visitors and where ever there is a beach, there will be good business opportunities as these people want their ice-creams, souvenir's and water-gear. Without the beach, those businesses can't exist. It increases local revenue and provides jobs for those in the area.

2. Need of beach development:

- To create the main sources for relaxing and enjoying in the city.
- To provide a tourism place.
- To provide the income to the government.
- To help the public financially by increasing Job opportunity.
- To serve as an identification to the city.

3. Introduction of Suvali VILLAGE:

Suvali village is situated at Hazira, Taluka Choriyasi, District Surat. This village does have a small population of around 560. This village is not more developed though having small primary school and dispensary. Around % of land is available for agriculture near the Suvali village some factories or companies were there. Suvali village located at the 31 kilometers from the Surat.

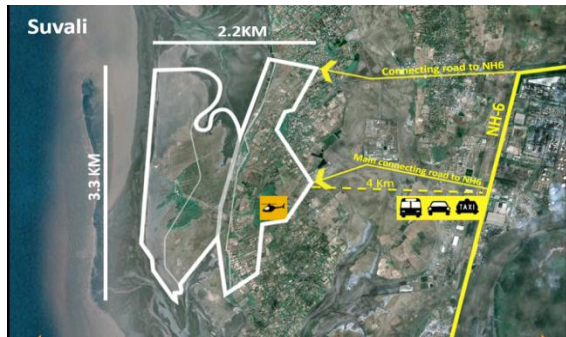


Population of suvali Beach

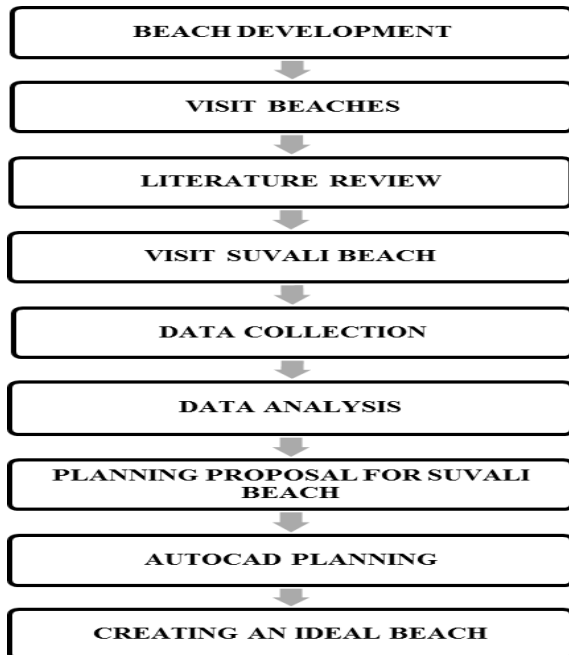
Total population (including institutional and houseless population)	Persons	Males	Females
	4165	2308	1857
Literates	834	342	492
Total workers	2003	1522	481
Main workers	1795	1432	363
Agricultural labour	113	30	83

Source: (Census of India 2011 Gujarat)
(District Census Handbook)

Suvali beach is situated about 1 km away from the suvali village. It has an area of 11 km. this beach is undeveloped and does not have many facilities like eating and drinking, parking, entertainment and protection. This beach just has a couple of canteens. The land surrounding the beach is not useful in any agricultural purpose.



II. METHODOLOGY



III. DATA COLLECTION

1. FACTS ABOUT SUVALI BEACH

Suvali beach is a black sand beach. The sand is slippery and slips fast beneath your feet. The beach is perfect to spend quite moments alone or with your family and friends. Come here to witness a blissful sunrise and sunset. The Arabian Sea at Suvali and other beaches like Ubhrat are quite stormy many times. People are lured to venture deep inside during low tide when the water is almost a kilometer away from shore.

2. BASE MAP OF SUVALI



3. TOPOGRAPHY MAP



4. ACCIDENTAL DATA

SR NO.	DATE	NAME OF PERSON	AGE	FROM	REASON
1	30/8/2015	Mansukh Darbar Pushpa(Wife) Dilip(Son) Nikita(Daughter)	35 32 15 12	Rajasthan	Tapped in the High Tide
2	29/4/2013	Shankar Shavant Bablu Patel	28 23	Labour of Kribco	Swim to the shore
3	15/6/2014	Sandip Lunar Sagar Lunar Yogendra Lunar Manish Sharma	25 28 26 27	Adajan Patiya Surat	Were washed away in High Tide and Heavy Currents of sea
4	24/5/2009	Alok Chauhan	35	Surat	Swept away into the sea at Suvali

IV. ACKNOWLEDGEMENT

We are glad to express our gratitude towards civil engineering department, Bhagwan Mahavir College of engineering and technology, Surat for gave us an

opportunity to develop the project. Then our humble thanks to all professors and all staff members of our college for the co-operation and keep interest extended by them throughout our B.E course.

We are thankful to our project guide, Asst. Prof. Jainil M. Master who inspires us to undertake this Project. His guidance and continuous interest kept us going in spite of all the difficulties throughout the project.

Above all, how can we forget MR KAMAL PADHIYAR, our respected Head of Department (H.O.D) who gives direction to our work and shaped to our immigration. We deeply indebted to them for providing immeasurable guide lines and reposing faith in us when thin gone wrong.

We are thankful to all the staff member of civil department for their kind support at various stages of the work.

We are thankful to each and every group member who participated in this work to complete the project.

V. CONCLUSION

Providing job offers opportunity, in future it will be the best tourism place in Gujarat. Local government utilizes the amount received as tax collected from tourists for the various development works there to maintain the tourist traffic in that area.

Road connectivity to Surat to Suvali beach, people may know about the natural view of Suvali beach. People are easily connect with the nature, and they fulfill their special time with family, friends.

REFERENCES

- [1] Russell Arthur Smith "A model of development evolution" 428 Oceamic Drive South, Wurtulla, Old. 4575. Australia (Accepted 26 march 1991)
- [2] Proshanta Kumar Ghosh, Debajit Datta "Coastal tourism and beach sustainability-An assessment of community perceptions in kovalam, India" (Siberia high school, Siberia 713314, west Bengal, India) (Department of geography, Taki Government College 743429, west Bengal, India) 2012
- [3] Daniel Anthoni, L. Hakim, A. Suharyanto, Soemarno "The Strategy of Potential tourism development in Namalatu Beach at Nusaniwe Sub District, Ambon City, Indonesia" 2017

- [4] Mohamaad shamsuddoha “Opportunities of developing tourism industry in Bangladesh” (Assistant professor, Department of Marketing Studies and International Marketing University of Chittagong, Bangladesh)
- [5] Sanjana monad, Jaydip sen “A Framework of Predictive Analysis of Tourist Inflow in the Beaches of West Bengal: A Study of Digha-Mandarmoni Beach” (Department of Marketing Management, Calcutta Business School, Diamond Harbour Road, Bishnupur – 743503, West Bengal, INDIA), (Department of Information Technology and Analytics, Praxis Business School, Bakrahat Road, Thakurpukur, Off Diamond Harbor Road, Kolkata – 700104, INDIA)
- [6] Dr. Sinee Sankrusme “Potential Development Strategies on Marine and Beach Tourism”
- [7] Mauro Fabiano, Gabriella Camarsa, Rosanna Dursi, Roberta Lvaldi, Valentina Marin, Francesca palmisani “Integrated Environmental Study for Beach Management: A Methodological Approach” 2004