

# Repertorial study of Nosodes with special emphasis on Medorrhinum

Dr. Prashant N. Bharbat, Dr. Milind Sudamrao Jondhale, Dr. Rajesh Ishwar Tungenwar  
*Principal/Professor, Department of Homoeopathic Materia Medica, Shalinitai Meghe Homoeopathic  
Hospital, College & Research Centre, Wanadongri, Hingana Nagpur*  
*Associate Professor, Department of Organon of Medicine, Mauli Homoeopathic Medical College &  
Research Institute Tondar (Udgir)*  
*Assistant Professor, Department of Human Anatomy, Mauli Homoeopathic Medical College &  
Research Institute Tondar (Udgir)*

**Abstract:** Introduction: Nosodes are homeopathic remedies prepared from diseased tissues, bodily secretions, or pathogenic organisms. They are significant in homeopathic therapeutics due to their miasmatic and curative properties. This study focuses on the repertorial approach to nosodes, with special emphasis on *Medorrhinum*, a sycotic nosode derived from the gonorrhoeal discharge.

**Objective:** To explore the repertorial entries of nosodes, particularly *Medorrhinum*, and highlight its clinical utility, miasmatic significance, and repertorial indications in homeopathic practice.

**Methodology:**

- A repertorial review of nosodes was conducted using major homeopathic repertories like Kent's, Boericke's, and Synthesis.
- Special attention was given to *Medorrhinum* for its key rubrics in the mental, physical, and general spheres.
- The miasmatic analysis and clinical indications were studied in relation to chronic diseases and deep-seated pathologies.

**Key Findings:**

- *Medorrhinum* is prominently indicated in cases of sycotic miasms, including conditions like asthma, chronic rheumatism, and skin diseases.
- Repertorial rubrics frequently highlight *Medorrhinum* in the treatment of mental symptoms such as forgetfulness, hurried behaviour, and extreme sensitivity to time.
- Physical symptoms like nocturnal enuresis, urinary tract infections, and a specific affinity for genitourinary and mucosal membranes were observed.
- General indications include aggravation at night, heat intolerance, and symptoms improving by the sea.

**Conclusion:** *Medorrhinum* plays a crucial role in addressing deep-rooted sycotic conditions and chronic miasms. Its repertorial significance highlights its versatility in treating a range of mental, physical, and general health issues. Nosodes, particularly *Medorrhinum*, should be considered in cases with miasmatic burdens, and repertorial entries serve as a vital tool in selecting the remedy. This study emphasizes the importance of integrating nosodes in clinical practice for comprehensive miasmatic treatment.

**Keywords:** Nosodes, *Medorrhinum*, sycotic miasm, repertorial study, homeopathy.

## INTRODUCTION

Nosodes:

Are morbid matter of disease itself that is product from 'death.'

Nosodes play the role of catalytic agent that arouses the vitality of sick organism as well as that of remedy which seeks to heal. Nosodes are the pacemakers of our Materia Medica behind every human alignment is the tragic tale of misery and misfortune. The holistic approach of homoeopathy places mind before physical body and whole before the part in every sickness and this is what the essence of remedy which represents human personality and behaviour patterns.

Each Nosode has unique lifestyle apart its general features

A nosode can be used when

1. There is chronicity of complaints which may be due to
  - Mismanaged dermatosis or intermittent diseases

- Disease stagnating from defective phagocytosis

## 2. Sequelae of infections

When there is progressive debility or vague symptoms with no apparent cause

3. When best selected remedy fails to act

4. In paucity of symptoms

Miasms and nosodes are suggestive of the idea of disease being caused not by the “*morbific particles*” on the material level, as allopaths contend, but by some internalized ‘subtle essence’ carried by the germ and transferred through potentiation to the nosode. Kent makes it very clear that homeopathy has a vitalistic rather than a materialistic view of disease:

*“The microbe is not the cause of disease. We should not be carried away by these idle allopathic dreams and vain imaginations but should correct the Vital Force.”* And that *“the Bacterium is an innocent feller, and if he carries disease, he carries the Simple Substance which causes disease, just as an elephant would.”*

Such an idea clearly resonates with the medieval view of substance as equally ‘alive.’ An idea not as distant as we might think from the effect of potentiation on substance.

When a nosode is administered by the totality of the symptoms it is a constitutional simillimum just like the mineral, plant and animal remedies. The nosodes belong to a genus of primitive miasms which are the first life forms on our planet and symbiotically related to the development of the first plant algae. Viruses, bacteria, and fungi are ancient genus groups and some produce disease in human beings. The minerals are the first remedies on the developmental chain followed by the miasms, fungi, lichens, fern allies, ferns, gymnosperms, dicotyledons and monocotyledons, and finally, the animal remedies. The nosode genus group has a very special place in Classical Homoeopathy.

Hahnemann wanted the nosodes to be well proven before they are entered in the *Materia Medica*. He was quite concerned that Homoeopathy might become mixed with isopathy which gives remedies solely by causation. Swam, who is given credit for introducing contemporary *Medorrhinum* and *Syphilinum*, was asked if it was correct to use unproven nosodes. He replied that 100’s of years of suffering these genus diseases, and their complications, provided a “natural proving”.

## MATERIALS AND METHODS

### PLANNING AND SOURCE OF DATA

A prospective study of 30 cases having different symptoms was carried out between March 2009 to March 2010 from Hospital attached to the college to see the efficacy of homoeopathic medicine *Medorrhinum* in treating various diseases. The cases obtained from different ages, occupation, body built, socioeconomic status, habits were taken into consideration during this period.

### SELECTION OF PATIENTS:

Patients exhibiting different signs and symptoms were included in this study.

The symptoms, signs and laboratory findings were followed for diagnosis of the cases. This is done not only to support the diagnosis but also to rule out any complication.

### METHODOLOGY

#### CASE RECORDING

One standard case recording schema and a special questionnaire was maintained for keeping the clinical profile of the patients. This format was prepared according to the homoeopathic method of case taking, keeping the diagnostic aspects. The schema incorporates the biodata as well as other specific information about the patients including their age, religion, occupation, addiction, habitat, habits, their presenting features, past/personal/family histories, physical/mental generals, physical examination findings etc. It also includes data of routine and special investigations done to confirm the diagnosis. The format also records the details of treatment given with, medicine, potency, repetition, schedule diet and advice and details of follow up till the end of treatment and finally results/remarks if any.

#### DIAGNOSTIC CRITERIA

The diagnosis of the patients was made basing mainly on history, the symptoms and signs present in different diseases.

#### INCLUSION CRITERIA:

- Patient of both sex from all age group will be taken for this study

- Diagnostic criteria are mainly based on clinical presentation, examination finding and investigation reports.

Medicine was given on the basis of law of similar and concept of individualization. Potency selection was based on the rules of homoeopathic posology

**EXCLUSIVE CRITERIA:**

- Patient with advanced pathology will be excluded
- Patient who are not willing to follow the guidelines regarding homoeopathy such subjects are also excluded.

**ROUTES OF ADMINISTRATION**

Medicines were administered orally.

**FOLLOWUP CRITERIA:**

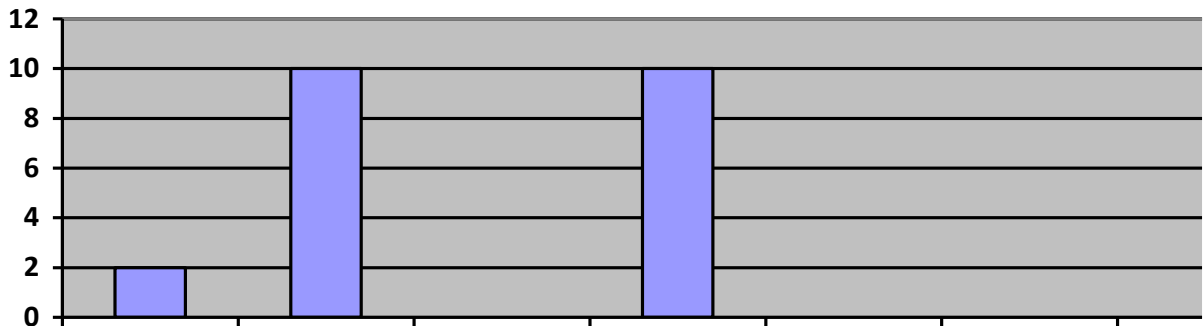
Patients were assessed on the basis amelioration of complaints. Follow up was taken whenever necessary for 2 months. Patients with complete relief of symptoms with the remedy but relapse of similar complaints within 2 months of time span will be considered as recurrence.

**SELECTION AND ADMINISTRATION OF MEDICINE**

**OBSERVATION AND ANALYSIS**

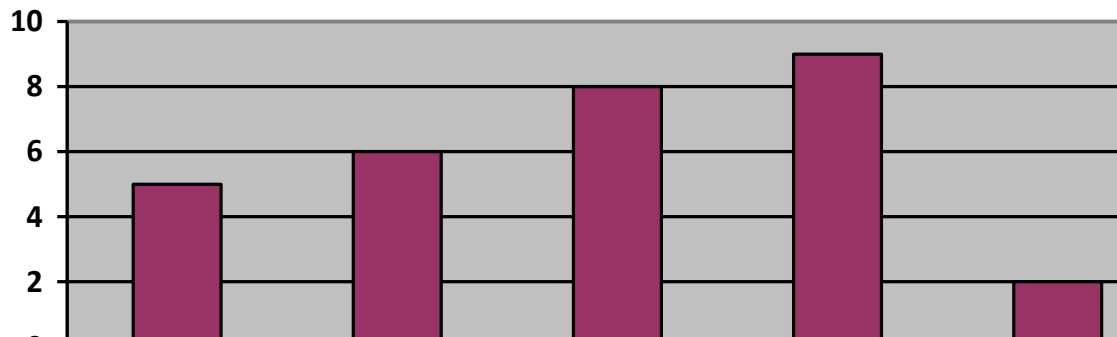
1. Age Incidence

**DISTRIBUTION OF CASES IN RELATION WITH AGE INCIDENCE**



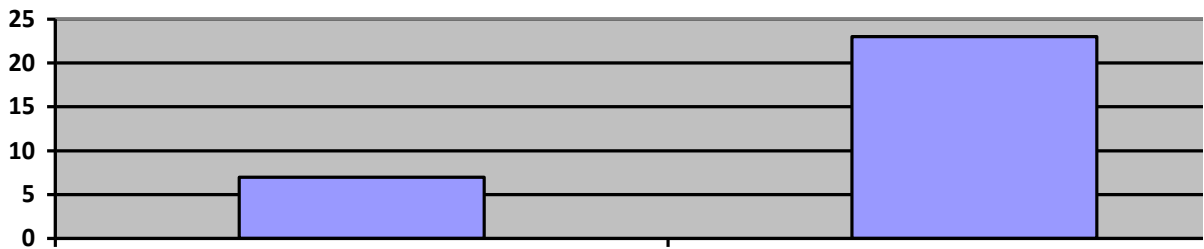
2. Type of Occupation

**DISTRIBUTION OF CASES IN RELATION WITH OCCUPATION**



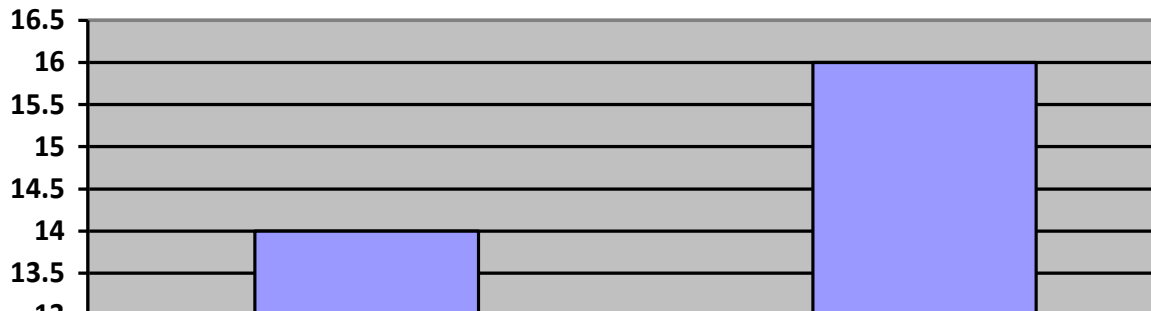
3. Distribution of cases in relation with habitat

Distribution of cases in relation with Habitat



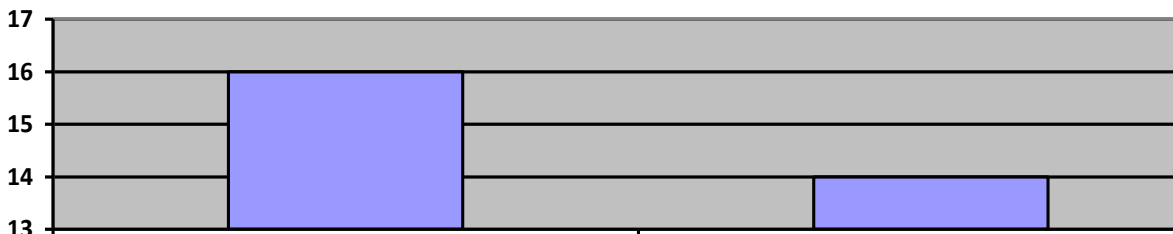
4. Type of diet

Distribution of cases in relation with diet



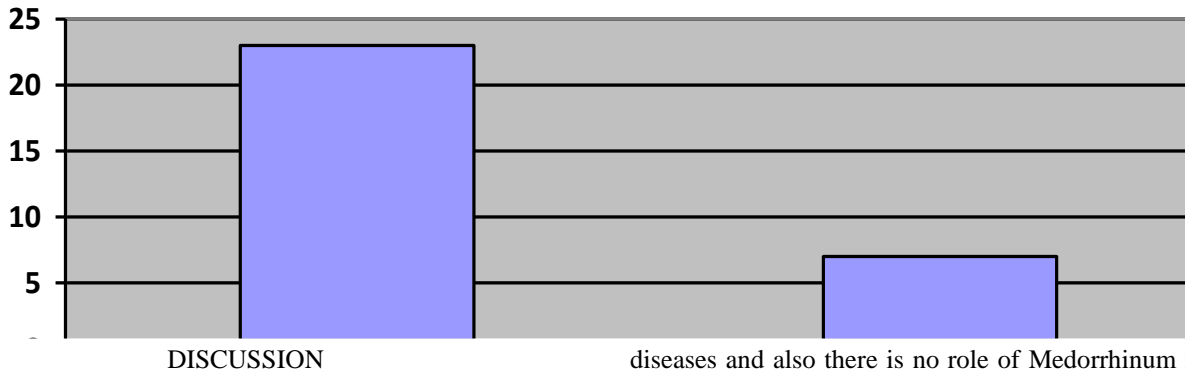
5. Sex Incidence

Distribution of cases in relation with Sex



6. Result of the treatment

**Result**



The present work is a prospective study of thirty (30) patients of different diseases. The patients were selected from my private clinic and from R. P. Chordiya Hospital, Chandwad between the period of May 2009 to March 2010.

On analyzing 30 cases, it is found from the table no.1 that the majority of the cases observed in the study were in the age group of 31-40 years. From the study of 30 cases, it is found that the patients who were in this age group are responded well to Medorrhinum as compared to other age group.

On analyzing 30 cases, it is found that the students are ill more as compared to different other occupation. From the study of 30 cases, it is found that students are responded well to Medorrhinum as compared to housewife, Farmer, Businessman, and government servant. From this it is understood that students can respond well to Medorrhinum.

As we know, habitat and life style play a significant role in the occurrence of the disease, it is found that patients living in urban areas have fewer incidence when compared to the slum area. Form this it is understood that life style measures, diet and poor hygiene are the main causes for these diseases.

On analyzing the 30 cases, it is found that patients who are taking. Veg diet or Non Veg diet both are equally are prone to develop different diseases. From this study, it is understood that diet does not play an important role in producing any type of diseases.

On analyzing the 30 cases, it is found that patients both male and female can get different types of diseases. From this study, it is understood that sex does not play an important role in producing different types of

diseases and also there is no role of Medorrhinum in treating especially any sex.

On analyzing the presentations of symptoms of different diagnosis of the cases, it was found that in Medorrhinum can treat any type of diseases of any causation, any modalities either acute or chronic. But it is found that in treating warts, Medorrhinum plays a very important role other than different nosodes. And also in treating female complaints, Medorrhinum acts very well.

From the study, it is also found that Medorrhinum can cure different diseases such as Aphthous ulcer, Dysmenorrhoea, Lumbar spondylitis, Fever, Conjunctivitis, Nasal Polyp, Cystitis, Inguinal Hernia, Metrorrhagia, Stye, acute gastritis, Rheumatoid arthritis, ASOM, Migraine, Pneumonia, Acute rhinitis, warts, vertigo, UTI, leucorrhoea with dysmenorrhoea, Acne, Tension headache, acute peptic ulcer, Haemorrhoids, eczema, URTI, Earache, migraine, and cervicitis.

**CONCLUSION**

The treatment of different types of diseases according to modern system of medicine is antibiotics, steroids, pain killer etc which makes the patient uncomfortable and produce several complications. Though, it is very common conditions, but due to afraid of complications of allopathic medicines, the people fear to seek advice of the physician and because of these, the condition of the patient will deteriorate and cause complications in their body.

To study different cases of different diseases, the 30 cases were considered, an attempt was made to understand the diseased individual through case taking. Once the case taking was conducted,

symptoms for repertorization were selected. Only Kent Repertory is used.

Repertorization made the job of selecting a group of remedies much easier, as it projected few competing remedies. Final selection of the remedy was done considering the “constitution” of the patient and the nature of the ailment. High and low potencies were used depending upon the intensity of the symptoms and the temperament of the sick. As far as possible, frequent repetition was avoided.

The patients were administered Medorrhinum a deep constitutional medicine. The medicine was prescribed empirically on oral route. The medicine was prescribed in the form of potencies; the dose was 4-5 pills at a time. Depending upon the severity of the cases the dose was repeated two to three times a day. Most of the times the dose was administered in water doses, every half an hour to one hour, every two hourly and four hourly in acute cases. Repetition was done till some subjective effect observed.

Total 30 cases were treated. The result found to be positive and encouraging. Among thirty cases 23 cases were completely cured while 7 cases were partially cured. Though all the potencies are effective but positive response was more with medium and high potencies.

The result obtained from this study is encouraging. So the most outstanding feature of this study was

1. A nosode Medorrhinum was effective in the treatment of various types of acute and chronic diseases.
2. More effective in females and students as compared to male and other occupation people.
3. Medorrhinum plays an important role in treating different types of cases as avoiding dangerous complications of modern system of medicine.
4. All 30 cases were repertorised with the help of Kent Repertory. This repertory is very useful in treating acute cases.

In all these different cases having different diagnoses, not only the location is important but also the sensation, modalities, concomitants and physical and mental generals are important as these help in selecting the proper homoeopathic medicines.

Medorrhinum had relieved the various symptoms of different diseases in a considerably less time. Compared to modern system of medicine, our

medicines are very much cost effective and provide relief for a longer time.

The study has also shown that most of the cases are relieved and had no recurrence where as with modern system of medicine the recurrence is high and it reveal that homoeopathic medicines strengthen one’s defense mechanism to fight off with the condition.

The human body is a perfect machine made self-sufficient by the creator, it has hot computers to take decisions and chemical factories in the form of glands to produce chemicals etc. required for proper working of this machine. The human body has primarily two systems that are defensive and reparative. Homoeopathic medicines help in strengthening these both mechanisms.

Through this study it was found that Medorrhinum is effective in any types of cases either acute or chronic. In this study it has treated the following diseases.

Aphthous ulcer, Dysmenorrhoea, Lumbar spondylitis, Fever, Conjunctivitis, Nasal Polyp, Cystitis, Inguinal Hernia, Metrorrhagia, Stye, acute gastritis, Rheumatoid arthritis, ASOM, Migraine, Pneumonia, Acute rhinitis, warts, vertigo, UTI, leucorrhoea with dysmenorrhoea, Acne, Tension headache, acute peptic ulcer, Haemorrhoids, eczema, URTI, Earache, migraine, and cervicitis.

Every new case we get is a different puzzle to solve and that’s the beauty and challenging part of homoeopathy. Homoeopathy cannot stand without the pillar of individualization and this was again confirmed through this small study. Homoeopathic medicines when given on the basis of symptom similarity and on the principle of individualization can soothe any discomfortable condition and give rapid, gentle and permanent restoration of health.

Each is a unique individual, of unique heredity, of unique environment, of unique biochemical structure and unique mental background and so homoeopathic medicines are given on the tailor-made approach where as allopathic medicines are given on readymade approach and so homoeopathic medicines can meet the requirements of each unique individual properly.

#### REFERENCE

- [1] Kent, J.T.: “Kent’s Repertory of the Homoeopathic Materia Medica”; Reprint Edition 1999; B. Jain Publishers Pvt Ltd., 1921, Street No. 10, Chuna Mandi, Paharganj, New Delhi - 110055

- [2] Boenninghausen C. M. F. Von,; “Boenninghausen Therapeutic Pocket Book”; Reprint Edition 1994, B. Jain Publishers Pvt Ltd., 1921, Street No. 10, Chuna Mandi, Paharganj, New Delhi - 110055
- [3] Boger C. M.; “Boenninghausen’s Characteristics Materia Medica & Repertory”; Reprint Edition November 2007; Block 5/62, Dev Nagar, Pyarelal Road, Karol Bagh, New Delhi 110005; Indian Books & Periodicals Publishers.
- [4] Taber’s Cyclopaedic Medical Dictionary; 19<sup>th</sup> Edition; F.A. Davis Company, 1915 Arch St., Philadelphia, The United States of America.
- [5] Software - Hompath
- [6] Website
  - 1. [www.similima.com](http://www.similima.com)
  - 2. [www.google.com](http://www.google.com)