

A Review on Artificial Intelligence based Astrology for Traditional Predictive Systems in Digital Edge

Ms. Ami J. Belani¹, Dr. Nirali C. Dave²

¹Teaching Assistant, Dept of Computer Science, Vanita Vishram women's University, Surat

²Assistant Professor Dept of Computer Science, Vanita Vishram women's University, Surat

Abstract: One of the oldest prediction systems, astrology has been essential to human spirituality and society for ages. Through digital platforms, social media, and online services, astrology has reappeared in modern society, allowing for more accessibility and individualized involvement. By automating intricate calculations, processing massive datasets, and producing data-driven predictions about personality traits, career guidance, and life events, the combination of artificial intelligence (AI) and machine learning techniques has further revolutionized traditional astrological practices. When compared to traditional rule-based techniques, AI-based astrological models improve accuracy, scalability, and analytical efficiency. However, using AI in predictive spiritual systems raises ethical issues that need to be carefully considered, such as bias, transparency, and responsible use. To portray digital astrology as a cutting-edge, scalable, and data-driven forecasting framework in line with current technological developments, this study examines the convergence of conventional astrology, digital technology, and artificial intelligence. The combined interpretation of birth charts, divisional charts, planetary periods, and transits, can be carried out effectively and reliably by integrating AI into conventional astrological techniques. This combination maintains the methodological and philosophical integrity of traditional astrology while improving predicted accuracy, personalization, and accessibility. In order to provide a data-supported, transparent, and scalable predictive framework for future astrological study, the suggested method shows how contemporary artificial intelligence might serve as an analytical aid to traditional astrological knowledge.

Key words: Astrology, Artificial Intelligence, Machine Learning, Predictive Systems, Data Analytics, Expert Systems.

I. INTRODUCTION

One of the oldest systems of prediction and interpretation, astrology has been ingrained for generations in human spirituality, culture, and social

comprehension. Astrology's importance in investigating significant linkages between cosmic events and human experiences is highlighted by early theoretical underpinnings like Jung's concept of synchronicity [1]. Astrology has continued to have a significant impact on popular religion and contemporary spiritual practices over time, adjusting to shifting social and cultural circumstances [2][3]. Astrology's continued significance in modern life is reflected in recent research that highlights its role in personal empowerment, meaning-making, and emotional well-being [4][6].

The practice and consumption of astrology have changed in recent years due to major cultural changes and the emergence of digital belief systems [7][8]. Social media, online platforms, and mobile applications have made astrological services more accessible and customizable, which has accelerated the development of digital astrology [9][11][18]. Astrological systems are increasingly using artificial intelligence and machine learning approaches to automate intricate computations and enable data-driven prediction models in tandem with this digital transition [12][14][17]. While these intelligent systems improve analytical efficiency and scalability, they also present new issues with bias, transparency, and ethical responsibility in prediction technology [15][16]. The development of contemporary, moral, and scalable astrological forecasting frameworks is based on the merging of digital technology, artificial intelligence, and classical astrology.

Digital astrology represents a significant transformation in the practice and accessibility of astrology, as it integrates traditional astrological principles with modern technology. This convergence between ancient wisdom and technological

advancements has made astrology more accessible, personalized, and efficient than ever before.[18]

The definition of digital astrology can be broken down into two key components: the digital aspect and the astrological component. The digital aspect refers to the use of technological tools, such as software programs, websites, and mobile applications, which facilitate the delivery of astrological services. This allows astrology to transcend traditional barriers, reaching a global audience and allowing astrologers to serve clients remotely.[17]

Planets: Symbols and Influences		
<i>Planet</i>	<i>Symbol</i>	<i>Area of Influence</i>
Sun	☉	Self, main concerns, vitality
Moon	☾	Emotions, instincts, habits
Mercury	☿	Communication, intellect, reason
Venus	♀	Love, beauty, art
Mars	♂	Action, desire, aggression
Jupiter	♃	Expansion, optimism, abundance
Saturn	♄	Restriction, pessimism, structure
Uranus	♅	Rebellion, eccentricity, upheaval
Neptune	♆	Imagination, dreams, delusions
Pluto	♇	Transformation, obsession, power
North Node	♊	Your potential
South Node	♋	Your karmic past
Chiron	♄	Point of Healing

Table-1 symbols of planets and influences

II. LITERATURE REVIEW

The psychological and intellectual underpinnings of astrology were the main topics of early scholarly debates. The idea of synchronicity was first presented by Jung [1], who suggested that significant coincidences rather than causal mechanisms underlie astrological symbols. The theoretical foundation for interpretive and depth-psychological astrological research was established by this work. Campion [2] looked more closely at astrology as a persistent belief

system in the contemporary Western world, focusing on its social relevance and cultural continuity rather than its scientific validity.

Astrology started to be examined within the larger context of modern spiritual activities in the late 20th and early 21st centuries due to a resurgence of interest in spirituality. While Brown and Clark [4] looked at astrology as a method for emotional reassurance and personal empowerment, Adams [3] investigated astrology's comeback as a tool for personal meaning-making. According to Lewis [5], astrology serves as a narrative framework that people use to make sense of uncertainty and significant life changes.

Additional research linked astrology to sociocultural transformation, identity, and well-being. Within holistic health methods, Davis and Harris [6] found connections between astrological and mental health. While Thompson [8] underlined astrology's function in identity building within digitally mediated cultures, Roberts and Watson [7] highlighted cultural trends that normalized astrology among younger generations.

The digitalization of astrology became a focus of inquiry as digital technology advanced. Astrology's expansion on social media was examined by Miller and McCann [9], who focused on accessibility and user participation. While Ashwani [11] researched the growth of online astrological platforms, emphasizing algorithmic personalization, mobile applications, and scalable digital services, Ashwani [10] investigated the significance of astrology in modern spiritual activities. According to these investigations, technology-driven belief systems are replacing conventional interpretive astrology.

Astrological prediction systems have increasingly included artificial intelligence and data-driven models. An intelligent astrological insight model for career prediction utilizing Randomized Weighted Synthetic Minority Over-Sampling Technique (R-WSMOTE) and hybrid classifiers like Decision Tree–Naïve Bayes (DTNB) was presented in the uploaded IEEE-based paper by Jaiganesh and Parameswari [12]. The study showed how hybrid learning models greatly increase prediction accuracy and successfully address class imbalance in horoscope datasets. Neural networks and supervised machine learning algorithms can capture non-linear correlations in

astrological datasets, improving computational efficiency and predictive reliability, as demonstrated by complementary studies by Kumar et al. [13] and Patel and Mehta [14].

Particularly in belief-oriented and culturally sensitive fields like astrology, Florida et al. [15] and Singh and Verma [16] stressed the significance of transparency, explainability, and responsible deployment of AI-based predictive systems from an ethical and system-design viewpoint. To reduce misunderstandings and psychological effects, this research emphasizes the necessity of explainable AI (XAI) and ethical precautions.

Multiple classification algorithms—such as Logistic Regression, Binary CART, Naïve Bayes, Decision Tables, Decision Stumps, and a Hybrid Decision Tree–Naïve Bayes (DTNB) model—are evaluated. Experimental results demonstrate that the hybrid DTNB classifier, when combined with R-WSMOTE, achieves the highest prediction accuracy of approximately 92%, outperforming individual classifiers. The findings validate the effectiveness of combining astrological domain knowledge with AI-based classification techniques, offering a computational foundation for astrology-based decision support systems. The study concludes that hybrid AI models can significantly enhance the reliability, scalability, and analytical validity of astrological predictions.[17]

examined astrology as a sociocultural phenomenon influenced by algorithmic mediation, digital media, and the individualization of belief. The study demonstrated how digital platforms reorganize astrological authority, replacing traditional experts with hybrid systems that combine computational and symbolic interpretation. This work provides a significant social-scientific basis for AI-assisted astrological systems by bolstering the claim that modern astrology increasingly functions at the nexus of cultural meaning, technology, and data-driven customization.[18]

Overall, the literature shows a distinct progression from philosophical astrological interpretations to AI-assisted and digitally mediated prediction systems. The current study on AI-based astrology as a cutting-

edge approach to conventional predictive systems is driven by the lack of complete frameworks that combine traditional astrological rule-based knowledge with sophisticated AI techniques and ethical design principles.

Numerous methods that have been evolved across civilizations and uses are included in astrology. The traditional foundations of astrology are Vedic (Jyotish), Western, Hellenistic, and Chinese; each employs a distinct zodiac and planetary framework. Astrological branches that concentrate on birth analysis, question-based forecasts, auspicious timing, and specific predictive techniques include Natal, Horary, Muhurta, Evectional, Nadi, and Jaimini. Karmic astrology, medical astrology, and financial astrology are examples of applied fields that study spiritual development, prosperity, and health. In order to provide automated and customized forecasts, contemporary AI-based astrology combines data analytics and artificial intelligence with conventional concepts.

III. REVIEW FINDING

Conventional astrological forecasting techniques mostly depend on human interpretation, predetermined principles, and manual computations. These systems have a number of drawbacks, including limited user customization, inability to scale, inconsistent predictions, and challenges processing vast historical records. A strong, automated, data-driven method that can improve traditional astrology while upholding its fundamental ideas is required in light of the expanding data availability and developments in artificial intelligence. Integrating AI methods with astrological information in a trustworthy, morally sound, and comprehensible way is the difficult part.

IV. OBJECTIVE OF DIGITALS ASTROLOGY

Examining the shortcomings of conventional astrological prediction systems and analyzing how artificial intelligence might improve the effectiveness and dependability of astrological forecasts are the main goals of this study. The goal of the project is to create a conceptual framework for an AI-based astrology system that combines cutting-edge computational methods with conventional astrological concepts. It also assesses how expert systems and

machine learning might enhance prediction accuracy, consistency, and scalability. The study also aims to pinpoint the main obstacles and moral dilemmas surrounding AI-powered astrological systems, such as concerns about user confidence, data privacy, and transparency. Lastly, the paper suggests future lines of inquiry to aid in the ethical and sustainable advancement of AI-based astrology in the digital age.

V. THE LIMITATIONS OF TRADITIONAL ASTROLOGY

Horoscopes, planetary charts, and skilled human interpretation are the main foundations of traditional astrological systems like Vedic and Western astrology. These methods, however, have a number of drawbacks, such as a significant reliance on expert astrologers, laborious manual computations, restricted scalability, subjective individual interpretations, and challenges in handling and evaluating enormous historical datasets. These difficulties emphasize the need for AI-driven solutions that can improve the precision and usability of astrological forecasts, automate calculations, lessen bias, and manage large amounts of data effectively.

VI. ARCHITECTURE OF AN AI-BASED ASTROLOGY SYSTEM

Figure 1 shows the planned AI-based astrological system's tiered design. By compiling individual birth information, planetary position data, and historical astrological records, the Data Collection Layer establishes the framework. To guarantee correctness and consistency, this raw data is treated in the Preprocessing Layer through feature extraction, data cleaning, and normalization. The AI Engine then analyses the revised data and models astrological patterns and relationships by combining rule-based expert systems, decision trees, and neural networks. These models are used by the Prediction Layer to produce outputs like horoscope creation, event predicting, and personality profiling. Lastly, the User Interface Layer enables effective and scalable access to AI-driven astrological forecasts by providing users with tailored astrological insights via online or mobile applications.

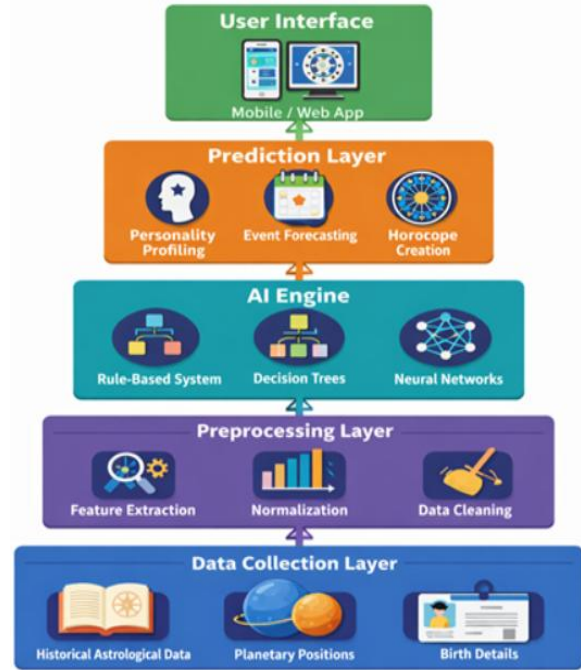


Figure 1: Architecture of the AI-Based Astrology System

VII. METHODOLOGY

The suggested approach creates a scalable digital astrology system by fusing cutting-edge artificial intelligence methods with conventional astrological concepts. The Vedic and Western astrological foundations are followed in the collection of astrological data, such as planetary ephemeris, birth charts, and historical horoscope records [1], [2], [18]. In order to identify important characteristics like planetary placements, aspects, and house influences, data preprocessing entails cleaning, standardization, and feature extraction. Classical astrological rules are formalized using a Rule-Based Expert System (RBES), and classification tasks related to personality and career prediction are supported by machine learning algorithms like Decision Tree (DT), Support Vector Machine (SVM), Naïve Bayes (NB), and K-Nearest Neighbour (KNN) [12], [14], [17]. Artificial Neural Networks (ANN) and other deep learning approaches are used to improve forecasting accuracy and recognize complicated patterns [13]. To guarantee openness, equity, and responsible use of astrological forecasts, ethical considerations are incorporated in compliance with existing AI governance frameworks [15], [16]. Predictions are produced via an AI engine that combines neural networks, rule-based expert

systems, and decision tree models. While machine learning algorithms identify intricate patterns in the data, rule-based methods maintain conventional astrological reasoning. The trained models generate outputs for automated horoscope production, event forecasting, and personality assessment. A mobile or web-based interface is used to convey the final results, offering individualized and comprehensible. The final results, which offer individualized and comprehensible astrological insights, are presented via a mobile or web-based interface. The current study builds an AI-based astrological prediction model using machine learning techniques and rule-based expert systems. To further increase predicted accuracy and overall system efficacy, future improvements might include explainable AI techniques and sophisticated deep learning.

VIII. CONCLUSION

AI-based astrology represents a significant digital evolution of traditional predictive systems. By integrating artificial intelligence with astrological knowledge, it is possible to overcome limitations related to scalability, subjectivity, and efficiency. While AI cannot replace human belief systems, it can serve as a powerful supportive tool. Proper validation, ethical considerations, and continuous research are necessary to ensure responsible and meaningful applications of AI in astrology. Advanced deep learning models can be used in future studies to better predict outcomes by capturing intricate astrological patterns. Transparency, trust, and dependability in AI-based astrological systems will be further improved by including explainable AI, real-time planetary data, cross-cultural datasets, and ethical validation frameworks.

REFERENCES

- [1] C. G. Jung, *Synchronicity: An Acausal Connecting Principle*, Collected Works, vol. 8. Princeton, NJ, USA: Princeton Univ. Press, 1952.
- [2] N. Campion, *Astrology and Popular Religion in the Modern West*. London, U.K.: Routledge, 2016.
- [3] J. R. Adams, "Astrology and its resurgence in modern spirituality," *Journal of Spiritual Studies*, vol. 24, no. 3, pp. 182–197, 2019.
- [4] L. M. Brown and S. A. Clark, "Astrology as a tool for personal empowerment," *Journal of Holistic Spirituality*, vol. 15, no. 4, pp. 101–118, 2020.
- [5] J. Lewis, "Meaning-making and uncertainty in contemporary astrology," *Sociology of Religion*, vol. 81, no. 2, pp. 145–160, 2020.
- [6] K. P. Davis and T. B. Harris, "Astrology and wellness: Integrating belief systems with mental well-being," *Journal of New Age Spirituality*, vol. 12, no. 2, pp. 67–79, 2021.
- [7] H. E. Roberts and T. M. Watson, "Cultural shifts and astrology in contemporary society," *Sociocultural Perspectives on Spirituality*, vol. 19, no. 3, pp. 112–125, 2021.
- [8] R. Thompson, "Identity construction through digital belief systems," *Digital Culture Studies*, vol. 6, no. 1, pp. 44–58, 2022.
- [9] D. J. Miller and E. McCann, "Astrology in the digital age: Social media and belief systems," *Journal of Digital Spirituality*, vol. 9, no. 1, pp. 35–48, 2022.
- [10] Ashwani, "The role of astrology in contemporary spiritual practices," *Indian Journal of Astrology and Occult*, vol. 2, no. 4, pp. 8–12, 2025.
- [11] G. Ashwani, "The rise of online astrology platforms," *Indian Journal of Astrology and Occult*, vol. 2, no. 4, pp. 13–18, 2025.
- [12] S. Jaiganesh and P. Parameswari, "An intelligent astrological insight model: A data-driven approach to profession prediction using hybrid classifiers," *Cuestiones de Fisioterapia*, vol. 54, no. 3, pp. 2075–2083, 2025.
- [13] A. Kumar *et al.*, "Neural network-based astrology prediction system," in *Proc. IEEE Int. Conf. Computational Intelligence*, 2021, pp. 210–215.
- [14] S. Patel and N. Mehta, "Machine learning approach for astrological personality analysis," *Int. J. Artificial Intelligence Research*, vol. 6, no. 2, pp. 34–40, 2020.
- [15] L. Floridi *et al.*, "Ethical principles for artificial intelligence," *Nature Machine Intelligence*, vol. 1, pp. 389–399, 2019.
- [16] V. Singh and M. Verma, "Ethical challenges in AI-based predictive systems," *Journal of Information Ethics*, vol. 29, no. 1, pp. 55–62, 2020.
- [17] S. Jaiganesh and P. Parameswari, "An Intelligent Astrological Insight Model: A Data-Driven Approach to Profession Prediction Using Hybrid

Classifiers,” *International Journal of Applied Social Science*, vol. 12, no. 1–2, pp. 111–133, Jan.–Feb. 2025

- [18] Tejaskar Pandey, D. K. Singh AND Anil Kumar Porwal, “Digital Astrology in the 21st Century” *International Journal of Applied Social Science*, vol. 12, pp. 111–133, 2023.