

Design and Development of an IoT-Enabled Smartwatch for Real-Time Health Monitoring

¹Ms. K. Theja, ²Ms. P. Aruna, ³Mr. M. Manojkumar, ⁴Mr. K. Sivaram, ⁵Mrs. S. Swarna Vijaya Durga
^{1,2,3,4}*B.Tech Student, Department of Electronics and Communication Engineering, Chadalawada Ramanamma Engineering College(A), Tirupati*
⁵*Assistant Professor, Department of Electronics and Communication Engineering, Chadalawada Ramanamma Engineering College(A), Tirupati*

Abstract - The rapid growth of wearable technology and Internet of Things (IoT) has significantly improved healthcare monitoring systems. Continuous monitoring of vital health parameters allows early detection of medical conditions and timely medical assistance. This paper presents the design and development of an IoT-enabled smartwatch for real-time health monitoring using an ESP-based microcontroller. The proposed system monitors essential physiological parameters such as heart rate, blood oxygen saturation (SpO₂), body temperature, and physical activity through a step counter. The collected data is displayed on an OLED screen and transmitted to a cloud server through Wi-Fi connectivity for remote monitoring. The system also includes an automatic alert mechanism that detects abnormal health conditions based on predefined threshold values. In emergency situations, alert notifications are generated using a cloud communication service to inform caregivers or medical professionals. The system is compact, low-cost, and suitable for continuous monitoring of elderly individuals and patients with chronic health conditions. Cloud integration enables remote access, data storage, and long-term health analysis. The proposed wearable system provides an efficient solution for real-time healthcare monitoring and preventive medical care.

Keywords - IoT, Smartwatch, Health Monitoring, Wearable Devices, ESP32, SpO₂ Sensor, Remote Healthcare.

I. INTRODUCTION

Healthcare monitoring plays an important role in maintaining human health and preventing severe medical conditions. Many health problems such as heart disease, respiratory disorders, and fever require continuous monitoring of physiological parameters. Traditional healthcare monitoring methods depend on

hospital visits and manual measurements, which can be inconvenient and time-consuming.

Wearable technology has emerged as a powerful solution for continuous health monitoring. Smart wearable devices such as smartwatches and fitness trackers can collect health-related data and transmit it to remote systems. The integration of IoT technology allows these devices to communicate with cloud platforms, enabling remote monitoring by healthcare professionals and family members.

The objective of this research is to design and develop an IoT-enabled smartwatch capable of monitoring vital health parameters in real time. The system uses sensors to measure heart rate, blood oxygen level, body temperature, and step count. An ESP microcontroller processes the sensor data and sends it to a cloud server via Wi-Fi. The system also includes an emergency alert feature to notify caregivers when abnormal health conditions are detected.

II. LITERATURE REVIEW

Many IoT-based healthcare monitoring systems have been proposed in recent years. Researchers have developed wearable devices capable of measuring vital signs such as heart rate and body temperature. These systems typically use microcontrollers like Arduino, Raspberry Pi, or ESP-based modules.

Several studies have focused on remote patient monitoring systems that transmit health data through wireless networks. These systems enable doctors to monitor patients remotely and reduce the need for frequent hospital visits. However, many existing systems are expensive and require complex infrastructure.

Recent advancements in IoT and embedded systems have made it possible to develop compact and low-cost wearable devices. ESP-based microcontrollers are widely used due to their built-in Wi-Fi capability and low power consumption. Integrating wearable sensors with IoT connectivity allows continuous health monitoring and real-time data analysis. The proposed system improves existing solutions by providing a compact smartwatch-based device capable of real-time monitoring, cloud data storage, and automatic emergency alerts.

III. SYSTEM ARCHITECTURE

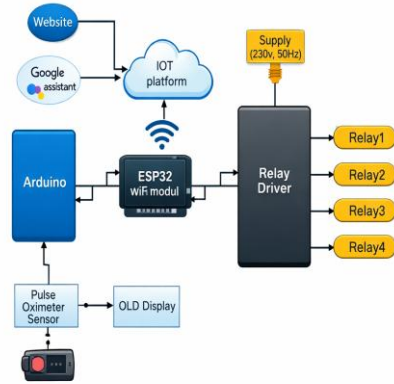


Figure 1: Block Diagram of IoT-Enabled Smart Health Monitoring Smartwatch

The system consists of the following major components:

- Heart Rate and SpO₂ Sensor
- Temperature Sensor
- Step Counter Sensor
- ESP32 Microcontroller
- OLED Display
- Wi-Fi Communication Module
- Cloud Server
- Alert Notification System

Sensors collect physiological data from the user and send it to the ESP microcontroller. The microcontroller processes the data and displays the information on the OLED screen. Simultaneously, the data is transmitted to the cloud server through Wi-Fi connectivity for remote monitoring.

IV. HARDWARE COMPONENTS

Table 1: Hardware Components Used

Component	Description
ESP32 Microcontroller	Controls sensors and Wi-Fi communication
Heart Rate & SpO ₂ Sensor	Measures pulse rate and oxygen saturation
Temperature Sensor	Monitors body temperature
Step Counter Sensor	Tracks physical activity
OLED Display	Displays real-time health data
Wi-Fi Module	Sends data to cloud server

V. WORKING METHODOLOGY

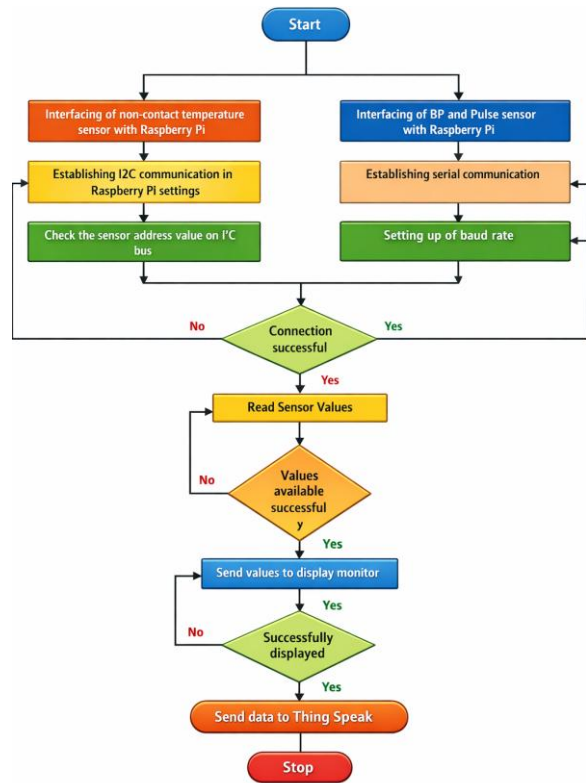


Figure 2: System Architecture for Real-Time Health Monitoring

The system operates through the following steps:

1. Sensors continuously collect physiological data from the user.
2. The ESP microcontroller processes the sensor signals.

3. The data is displayed on the OLED screen.
4. Processed data is transmitted to the cloud through Wi-Fi.
5. The cloud server stores and analyzes the health data.
6. If abnormal health conditions are detected, an alert notification is generated.

This architecture enables both local monitoring and remote healthcare monitoring.

VI. RESULTS AND DISCUSSION

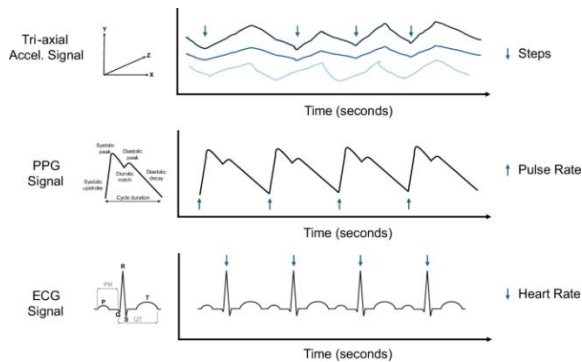


Figure 3: Heart Rate Monitoring Graph

The developed smartwatch successfully monitored vital health parameters. Sensor readings were displayed on the OLED display in real time and transmitted to the cloud server. The heart rate monitoring graph shows the variation of heart rate over time. The system effectively identified abnormal values and generated alert notifications.

Table 2: Sample Health Monitoring Results

Parameter	Normal Range	Observed Value
Heart Rate	60–100 bpm	78 bpm
SpO ₂	95–100 %	97 %
Temperature	36–37 °C	36.5 °C
Steps	—	1250

The results indicate that the system provides accurate and reliable health monitoring.

VII. APPLICATIONS

The proposed system can be applied in various healthcare environments:

- Remote patient monitoring
- Elderly health monitoring

- Fitness tracking
- Chronic disease monitoring
- Home healthcare systems

VIII. ADVANTAGES

The proposed smartwatch system offers several advantages:

- Real-time health monitoring
- Portable and wearable device
- Cloud-based data storage
- Automatic emergency alerts
- Low cost and energy efficient

IX. CONCLUSION

This paper presented the design and development of an IoT-enabled smartwatch for real-time health monitoring. The system integrates wearable sensors, an ESP microcontroller, and cloud connectivity to continuously monitor vital health parameters. The smartwatch displays real-time health data and transmits it to the cloud for remote monitoring. The emergency alert feature ensures timely medical assistance during abnormal health conditions. The proposed system provides a portable and cost-effective healthcare monitoring solution suitable for elderly individuals and patients with chronic diseases. Future work may include mobile application integration, machine learning-based health prediction, and improved sensor accuracy.

REFERENCES

- [1] J. Gubbi et al., “Internet of Things: A Vision, Architectural Elements, and Future Directions,” *Future Generation Computer Systems*.
- [2] S. Patel et al., “A Review of Wearable Sensors and Systems for Health Monitoring,” *IEEE*.
- [3] A. Pantelopoulos and N. Bourbakis, “A Survey on Wearable Sensor-Based Systems,” *IEEE Transactions*.
- [4] Y. Zhang, “IoT-Based Healthcare Monitoring Systems,” *Journal of Healthcare Engineering*.
- [5] P. Kumar, “Wearable Health Monitoring Devices Using IoT,” *International Journal of Engineering Research*.