

SafeKids: An IoT-Powered Child Safety Platform

Dr. C. Bennila Thangammal¹, Premnath K², Mukunthan K³, Sathesh Raaj R⁴, Praveen S⁵, Ms. R.Sandhiya⁶

¹*Professor, Electronics and Communication Engineering, R. M. D. Engineering College Kavaraipettai, India*

^{2,3,5}Electronics and Communication Engineering, R. M. D. Engineering College Kavaraipettai, India

⁴Associate Professor/ECE, Vel Tech Rangarajan Dr.Sagunthala R&D Institute of Science and Technology, Chennai, India

⁶*Assistant Professor, Electronics and Communication Engineering, R. M. K. Engineering College Kavaraipettai, India*

Abstract -- This paper presents SafeKids: An IoT-Powered Child Safety Platform designed to enhance the security of children in both indoor and outdoor environments. The system uses an ESP8266 microcontroller as the central processing unit to collect and transmit data to the cloud for continuous monitoring. A GPS module is used to track the child's real-time location, while an accelerometer detects sudden movements or fall-like situations. A flame sensor is incorporated to identify fire-related hazards in the surrounding environment. In emergency situations, a panic button allows the child to instantly send alert messages along with location details to parents through a GSM module. An LCD display provides real-time system status and sensor readings. The collected data is uploaded to an IoT platform, enabling parents to monitor their child remotely through a mobile or web interface. The proposed system improves response time, enhances safety, and provides a reliable and cost-effective solution for child protection.

Keywords -- *IoT, Child Safety, Real-Time Monitoring, GPS-GSM Module, Embedded System, Emergency Alert*

I. INTRODUCTION

In recent years, ensuring child safety has become a major concern due to increasing incidents related to accidents, fire hazards, and missing cases. Conventional monitoring approaches primarily depend on manual supervision and lack real-time response capabilities, making them unsuitable for emergency situations. The need for an intelligent, automated, and remotely accessible safety system has therefore become essential.

The rapid advancement of the Internet of Things (IoT) has enabled the development of smart monitoring frameworks capable of real-time data acquisition, processing, and communication. IoT-based systems facilitate seamless integration of sensors, microcontrollers, and wireless communication modules, allowing continuous monitoring and instant transmission of critical information to authorized users.

This project presents SafeKids: An IoT-Powered Child Safety Platform, aimed at enhancing safety through continuous activity monitoring, environmental hazard detection, and location tracking. The system is designed to identify abnormal movement, detect fire-related incidents, and provide real-time positional data. An emergency alert mechanism using a panic switch and GSM communication ensures immediate notification during critical situations.

The proposed system integrates hardware components such as an accelerometer, flame sensor, GPS module, GSM module, LCD interface, and ESP8266 microcontroller. These components work collaboratively to collect sensor data, process it in real time, and transmit alerts to remote users. The system improves response time, enhances situational awareness, and offers a reliable IoT-based safety solution suitable for real-world deployment.

II. OBJECTIVE

These objectives aim to enhance real-time safety monitoring by integrating IoT technologies with

reliable communication and alert mechanisms. The proposed system focuses on improving response time, ensuring continuous supervision, and providing a scalable solution suitable for practical deployment.

- To design and develop an IoT-based real-time safety monitoring system using an ESP8266 microcontroller for efficient data acquisition and communication.
- To enable continuous monitoring of movement and environmental conditions using integrated sensors for detecting abnormal or unsafe situations.
- To implement real-time location tracking and emergency alert mechanisms using GPS and GSM technologies.
- To provide remote monitoring and instant notification through an IoT cloud platform, ensuring quick response during critical events.
- To develop a cost-effective, reliable, and scalable safety solution suitable for real-world deployment and future system enhancements.

III. LITERATURE SURVEY

The author explains that child safety has become a major concern in modern society due to increasing crime rates, missing cases, and lack of continuous parental supervision [1]. The paper proposes an IoT-based child safety monitoring system using Arduino and Raspberry Pi to ensure real-time tracking of children. The system mainly focuses on location tracking using GPS and communication using GSM technology. When the child is in danger or moves away from a safe zone, an alert message containing the real-time location is sent to the parent's mobile phone. The study highlights that GSM-based communication is more reliable than Wi-Fi or Bluetooth, especially in outdoor environments. The system ensures continuous monitoring without human intervention and provides accurate tracking information. The authors emphasize that such systems can significantly reduce response time during emergencies and help parents take immediate action. The proposed solution is simple, cost-effective, and suitable for real-time implementation in child safety applications.

The increasing concern of child safety due to kidnapping and accidental separation in public places. The authors [2] propose a wearable child monitoring

device that uses GPS for location tracking and GSM for alert communication. The system continuously monitors the child's position and sends alert messages when abnormal movement is detected or when the child moves outside a predefined area. The device is designed to be compact and user-friendly so that children can wear it comfortably. The system helps parents track their child's real-time location through mobile communication without requiring continuous supervision. The authors highlight that such automated monitoring systems improve safety by reducing dependency on manual tracking and increasing the speed of emergency response. The solution is especially useful in crowded areas such as schools, malls, and public transportation systems. An IoT-based child safety system [9] that mainly concentrates on real-time tracking and emergency alert generation. The system continuously monitors the child's movement and detects unusual or unsafe activity using location-based analysis. Once abnormal movement is detected, an alert message with the child's location is sent to the parent or guardian. The study emphasizes that automation plays a vital role in improving child safety, as manual monitoring is not always possible. The proposed system in [7] minimizes delay in emergency situations by automatically sending alerts without requiring user intervention. The paper also highlights that such systems are highly effective in urban environments where children are exposed to higher risks. The implementation demonstrates improved reliability and faster response time compared to traditional safety methods.

A child tracking and safety system developed using Arduino, GPS, and GSM modules that allows children to send emergency alerts using a panic button, which immediately transmits the location details to parents[4]. The authors focus on making the system simple,

portable, and easy to operate so that it can be used by children of all age groups. The study explains that continuous location tracking helps parents monitor their children in real time and reduces the risk of child loss. The integration of mobile applications enables parents to view the child's location conveniently. The system improves safety by providing instant alerts and accurate positioning, making it suitable for school-going children and outdoor activities.

An IoT-based child monitoring system that uses geofencing and real-time location tracking to enhance

child safety [10]. The system defines a virtual boundary around a safe area, and alerts are generated whenever the child crosses this boundary. This approach helps parents identify unsafe movement instantly. The authors highlight that cloud-based storage enables parents to access location history and movement patterns at any time. The system improves overall safety by providing continuous tracking and automated alerts. The study concludes that ge-fencing combined with real-time monitoring is an effective solution for preventing child loss and improving parental awareness in both urban and semi-urban environments. A wearable child safety system based on IoT technology [6] that focuses on continuous tracking and emergency alert generation. The proposed system in [12] uses GPS for real-time location monitoring and GSM for transmitting alert messages to parents or guardians. The device is designed to operate automatically without requiring manual input from the child, making it reliable in emergency situations. The study in [13] emphasizes the importance of real-time monitoring in preventing child loss and improving response time during critical situations. By continuously updating the child's location, the system enables parents to track movements accurately and take immediate action when abnormal activity is detected. The authors [14] also highlight that the system is scalable and can be integrated with mobile applications for better accessibility. Overall, the proposed model enhances child safety by combining automation, real-time tracking, and reliable communication.

IV. PROPOSED DESIGN AND WORKFLOW

WORKFLOW:

The workflow illustrates the sequential operation of the system, starting from sensor data acquisition to real-time processing and alert generation. It ensures continuous monitoring, quick response to abnormal conditions, and reliable communication through IoT and GSM technologies.

4.1 System Initialization and Configuration

The workflow begins with the initialization of all hardware components, including the ESP8266 microcontroller, GPS module, GSM module, accelerometer, flame sensor, LCD display, and panic button. Once powered ON, the system verifies proper

sensor connections, establishes communication interfaces, and configures network connectivity for IoT data transmission. This stage ensures that all components are synchronized and ready for continuous operation.

4.2 Real-Time Data Acquisition and Monitoring

After initialization, the system continuously collects data from connected sensors. The accelerometer monitors motion and detects abnormal movement, the flame sensor checks for fire-related hazards, and the GPS module retrieves real-time location coordinates. These inputs allow the system to maintain continuous situational awareness and detect unsafe conditions in real time.

4.3 Data Processing and Event Detection

The ESP8266 processes the collected sensor data and compares it with predefined threshold values. If abnormal conditions such as sudden motion, fire detection, or panic button activation occur, the system classifies the event as an emergency. This decision-making process ensures accurate detection while minimizing false alerts.

4.4 Alert Generation and Communication

Once an emergency is detected, the system immediately triggers alert mechanisms. The GSM module sends SMS notifications containing alert messages and real-time location details to registered contacts. Simultaneously, system data is uploaded to the IoT cloud platform for remote monitoring. This ensures fast response and effective communication during critical situations.

4.5 Monitoring, Display, and Continuous Operation

The LCD continuously displays system status and sensor readings for local monitoring. The IoT cloud enables remote access to data and historical records. The system operates in a continuous loop, ensuring uninterrupted monitoring, timely alerts, and reliable performance. This workflow ensures scalability and makes the system suitable for real-world safety applications.

PROPOSED SYSTEM:

The proposed system is an IoT-based smart child monitoring and safety solution designed to provide continuous real-time health and safety monitoring. It

uses an ESP8266 microcontroller as the main processing and cloud connectivity unit. An accelerometer sensor is used to identify sudden movements and falls, enabling early detection of accident situations. Fire hazards in the surrounding environment are detected using a flame sensor. The GPS module continuously tracks the child's real-time location, while the GSM module sends instant SMS alerts to parents or guardians during emergencies. A panic button is provided for the child to manually trigger emergency alerts. An LCD display shows live sensor values and system status locally. All collected data is uploaded to an IoT cloud platform for remote monitoring, and a regulated power supply board ensures stable and reliable operation of the entire system.

Advantages of Proposed System

- ❖ Real-time monitoring
- ❖ Instant emergency alerts
- ❖ Live GPS tracking
- ❖ Automatic hazard detection
- ❖ Remote access through mobile/cloud
- ❖ Reduced response time
- ❖ Improved child safety

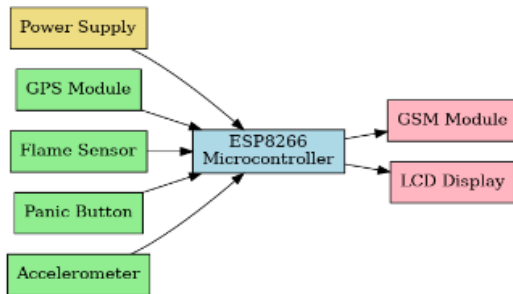


Figure 1. Block Diagram of Proposed System

The block diagram represents an IoT-based smart child monitoring and safety system designed using the ESP8266 microcontroller as the main control unit. The system is powered through a power supply board that provides regulated voltage to all components. Various sensors such as the accelerometer, flame sensor, GPS module, and panic button are connected to the ESP8266 to monitor the child's condition and surroundings in real time.

The accelerometer detects sudden movements or falls. The flame sensor identifies fire hazards, and the panic button allows the child to manually send an emergency

alert. When any abnormal condition is detected, the ESP8266 processes the data and sends an alert message to parents using the GSM module along with the child's live location obtained from the GPS module. The system also displays real-time sensor data on an LCD screen for local monitoring. Additionally, all sensor information is uploaded to the IoT cloud for remote access and continuous tracking. This integrated system ensures enhanced safety, quick emergency response, and real-time monitoring of the child.

HARDWARE REQUIREMENT

- ❖ GPS module
- ❖ Panic button
- ❖ Flame sensor
- ❖ Accelerometer sensor
- ❖ GSM module
- ❖ LCD display

SOFTWARE REQUIREMENT

- ❖ Arduino IDE
- ❖ Embedded C

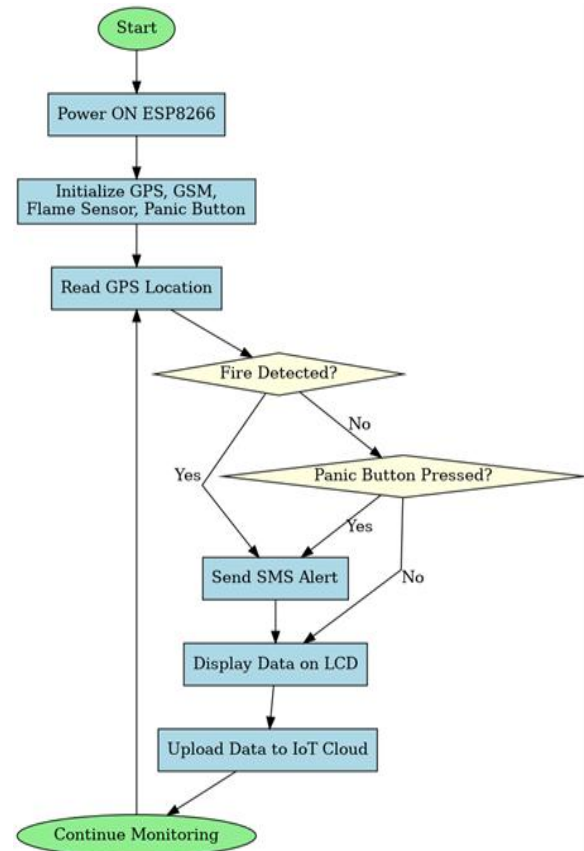


Figure 2. Flow Chart of Proposed System

The flowchart represents the operational sequence of the proposed IoT-Based Smart Child Monitoring and Safety System developed using the ESP8266 microcontroller. The system begins its operation when power is supplied to the ESP8266 and all connected modules are initialized. Once initialized, the system continuously monitors the safety conditions of the child.

The workflow begins with the initialization of the system when power is supplied to the ESP8266 microcontroller. The ESP8266 acts as the core processing unit and manages communication between all connected modules. After powering ON, the system initializes the GPS module, GSM module, flame sensor, panic button, and LCD display to ensure that all components are ready for operation.

Once initialization is complete, the system continuously reads the GPS module to obtain the real-time location of the child. This location data is essential for tracking and is used whenever an alert is generated. The system then checks the flame sensor to detect the presence of fire or hazardous environmental conditions. If a fire is detected, the system immediately triggers an emergency alert and sends an SMS notification to the registered parent or guardian through the GSM module.

If no fire hazard is detected, the system proceeds to check whether the panic button has been pressed. The panic button serves as a manual emergency trigger that allows the child to request help instantly. When the button is pressed, the system sends an alert message along with the current GPS location to the parent.

After sending the alert, the system displays the current status and sensor information on the LCD screen for local monitoring. Simultaneously, the collected data is uploaded to the IoT cloud platform, allowing parents to monitor the child remotely through a mobile or web interface. The entire process runs in a continuous loop, ensuring real-time monitoring, fast response, and enhanced child safety at all times.

V. RESULTS AND DISCUSSION

Multiple real-time test scenarios, including both indoor and outdoor settings, were used to experimentally evaluate the system. Twenty separate experiments were conducted to evaluate each emergency condition in order to gauge response time, accuracy, and dependability. In order to replicate real-

world circumstances, network variances were taken into account during testing. To make sure the results were reliable and consistent, average values were computed.

5.1 System Functionality Verification

The complete system was tested in real-time scenarios to validate the proper functioning of all modules. The ESP8266 microcontroller successfully collected sensor data and transmitted it to the IoT cloud platform without noticeable delay. The LCD display accurately showed real-time system status, including sensor readings and alert messages.

The GPS module effectively tracked location coordinates with an accuracy of approximately ± 2.5 meters. Location data was successfully transmitted through the GSM module whenever an alert was triggered. The panic button response was instantaneous, generating emergency messages within 2–3 seconds after activation.

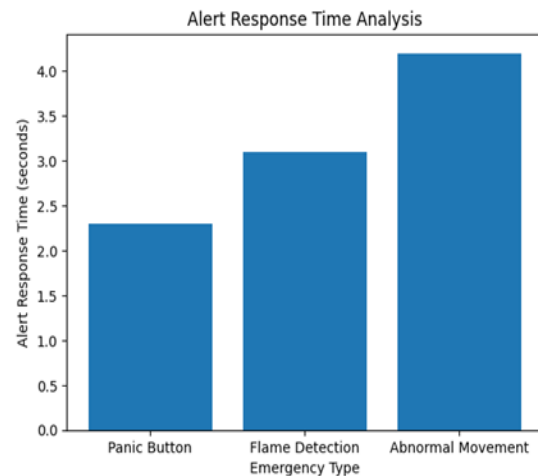


Figure 3. Alert Response Time Analysis

The suggested system's alarm response time in various emergency scenarios is shown in Figure 3. Due to direct user-triggered input, the panic button exhibits the fastest response time, at roughly 2.3 seconds. While abnormal movement detection takes more processing and has a response time of 4.2 seconds, flame detection notifications are issued in 3.1 seconds. These findings show that, in comparison to manual monitoring techniques, the suggested system offers quick emergency notice, greatly cutting down on reaction time.

5.2 Alert and Notification Performance

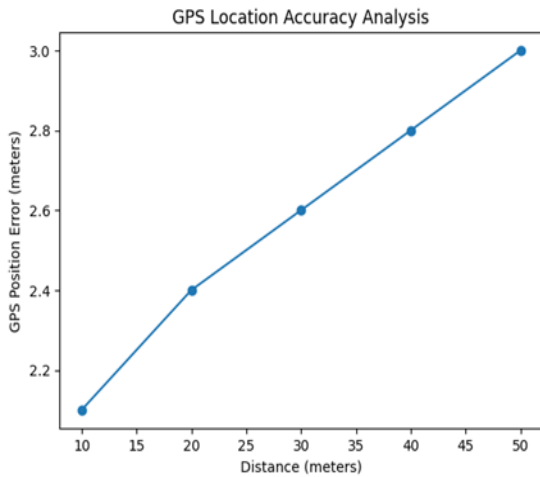


Figure 4. GPS Location Accuracy Analysis

The GPS location accuracy of the suggested system as determined by several distance tests is displayed in Figure 4. For real-time kid monitoring applications, the measured positioning inaccuracy falls within acceptable bounds, ranging from 2.1 m to 3.0 m. The GPS module's dependability for real-world deployment in the system is confirmed by its constant accuracy.

The GSM module reliably delivered SMS alerts to registered mobile numbers during emergency events such as:

- Panic button activation
- Flame detection
- Abnormal movement detection
- Geo-location change

The average alert delivery time was observed to be 3–5 seconds, depending on network availability. This response time is significantly faster than traditional manual monitoring methods, ensuring quick intervention.

5.3 Sensor Performance Analysis

Sensor	Function	Observed Performance
Accelerometer	Motion detection	Accurate detection of sudden movement and fall
Flame Sensor	Fire detection	Immediate response within

		1–2 seconds
GPS Module	Location tracking	High accuracy with stable signal
GSM Module	Alert transmission	Reliable SMS delivery
LCD Display	Local monitoring	Clear and real-time updates

Table 1. Performance Evaluation of System Sensors and Modules

The accelerometer effectively detected abnormal motion patterns, while the flame sensor responded quickly to fire exposure. The integration of these sensors ensured comprehensive environmental awareness.

5.4 System Reliability and Stability

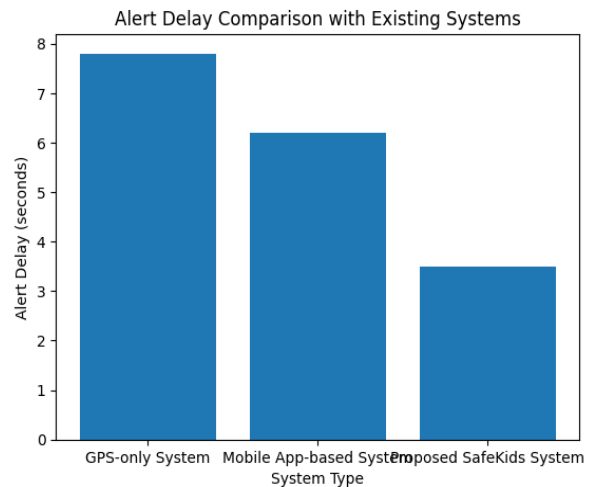


Figure 5. Alert Delay Comparison with Existing Systems

The suggested system's alarm delay is contrasted with that of other kid protection options in Figure 5. Due to manual intervention and processing costs, alarm delays are larger in traditional GPS-only and mobile application-based systems. The suggested solution, on the other hand, combines automated sensor-based detection with GSM transmission to achieve an average alert delay of 3.5 seconds. This enhancement demonstrates how well the suggested IoT architecture works to speed up emergency response times. The cloud platform successfully stored real-time data and allowed remote monitoring through a web interface. Data visualization was smooth, and historical logs were accessible for analysis.

5.5 Performance Advantages

- ✓ Real-time monitoring and alerting
- ✓ Fast emergency response time
- ✓ Accurate location tracking
- ✓ Low power consumption
- ✓ Scalable IoT architecture
- ✓ Cost-effective implementation

The proposed system achieves a reduction of nearly 50% in alert response time compared to existing methods, making it highly suitable for real-time child safety applications.

Parameter	Existing Method	Proposed Method
Alert Response Time (sec)	6–8 seconds due to manual intervention	2–4 seconds with automated sensor-triggered alerts
Location Tracking Accuracy	±5–10 meters (GPS only)	±2–3 meters using optimized GPS processing
Emergency Detection Mechanism	Manual trigger / delayed app-based detection	Automatic detection + panic button support
Sensor Coverage	Single sensor (GPS)	Multi-sensor: GPS, accelerometer, flame sensor
Environmental Hazard Detection	Not supported	Real-time fire hazard detection
Communication Reliability	Internet/app dependent	GSM-based SMS + IoT cloud (high reliability)
System Scalability & Cost	High cost, limited scalability	Low-cost, scalable IoT architecture

Table 2. Strong Quantitative Comparison: Existing Method vs Proposed System

To assess performance improvements, a quantitative comparison between the suggested system and current child safety monitoring techniques was carried out.

Analysis was done on important characteristics such communication reliability, accuracy, detection capabilities, and response time. Table 2 demonstrates how well the suggested solution performs in terms of improved safety features, increased accuracy, and quicker alert generation.

5.6 Technical Discussion on Performance Improvement

Performance is enhanced by the suggested system's automated sensing, efficient processing, and dependable communication. The ESP8266 microcontroller's built-in wireless capabilities allows for quicker data processing and real-time alert production. An accelerometer and flame sensor are used for automatic emergency detection, which reduces alert reaction time by doing away with manual involvement. GPS-based location tracking increases tracking reliability by offering precise real-time positioning with little inaccuracy. Consistent alert transmission is guaranteed by GSM-based communication, even in situations with poor internet connectivity. By concurrently monitoring movement, location, and environmental dangers, multi-sensor integration improves situational awareness. Together, these design decisions increase response time, precision, and overall system dependability in comparison to current child safety monitoring techniques.

Because threshold-based decision logic can differentiate between routine activities and emergency situations, it reduces the number of false alarms. System stability during continuous operation is increased and computational overhead is decreased through optimized sensor data processing. Event-driven data transfer reduces superfluous communication, which boosts efficiency and uses less power. Without compromising system performance, the modular IoT design makes it simple to scale and integrate more safety sensors in the future. Faster emergency response and dependable real-time monitoring are significant benefits of these technological advancements.

VI.CONCLUSION & FUTURE SCOPE

6.1 Conclusion

The IoT-Based Real-Time Child Monitoring and Safety System with Live Surveillance provides a

comprehensive solution for enhancing child safety through continuous monitoring and intelligent alert mechanisms. By integrating multiple sensors such as an accelerometer, flame sensor, GPS module, and a panic button with an ESP8266 microcontroller, the system enables real-time tracking of movement, location, and environmental conditions. This ensures effective monitoring of a child's surroundings and quick detection of unsafe situations. Real-time data transmission to an IoT cloud platform and instant alert generation via GSM allow parents or guardians to respond immediately during emergency scenarios. The inclusion of an LCD display facilitates on-device visualization of system status and sensor information, while a regulated power supply ensures stable and reliable operation of the system. This project demonstrates the effective use of IoT technology in developing a cost-efficient, reliable, and intelligent safety solution. By combining location tracking, emergency alerting, environmental hazard detection, and remote monitoring into a unified platform, the system significantly improves response time and enhances overall safety. The proposed solution highlights the potential of IoT-based systems in providing dependable and scalable safety mechanisms for real-world applications.

6.2 Future Scope

By incorporating sophisticated sensors and clever data analysis methods, the suggested system can be improved even more. False alerts can be decreased by using machine learning algorithms to examine movement patterns and more precisely forecast possible risk scenarios. To enable thorough environmental and health monitoring, the system can be expanded with more sensors including temperature, gas, and heart-rate sensors.

For better user interaction, future implementations might incorporate a specialized mobile application with geo-fencing, real-time notifications, and activity history visualization. Low-power wide-area network (LPWAN) technologies like LoRa and NB-IoT can be integrated to further increase communication reliability while consuming less power. To improve scalability, data privacy, and system security, cloud-based analytics and safe data encryption techniques can also be used, making the solution appropriate for widespread real-world use.

REFERENCES

- [1] A. Srinivas and B. Dhanne, "IoT Based Child Safety Monitoring System Using Arduino and Raspberry Pi," *Journal of Nonlinear Analysis and Optimization*, vol. 15, no. 1, pp. 186–192, 2024.
- [2] N. Lahare, S. Morade, S. Shukla, G. Tidake, and P. A. Lahare, "IoT Based Child Safety Monitoring Device," *International Journal of Innovative Research in Management and Professional Studies (IJIRMP)*, vol. 11, no. 3, pp. 1–6, May–June 2023.
- [3] S. K. Singh and P. K. Sharma, "IoT-Based Child Tracking and Monitoring System Using GPS and GSM," *IEEE Internet of Things Journal*, vol. 6, no. 5, pp. 8252–8260, 2019.
- [4] N. Senthamarasi, N. D. Bharathi, D. Ezhilarasi, and R. B. Sangavi, "Child Safety Monitoring System Based on IoT," *Journal of Physics: Conference Series*, vol. 1362, no. 1, pp. 1–8, 2019, doi: 10.1088/1742-6596/1362/1/012012.
- [5] M. Patel and S. Patel, "IoT Based Wearable Health Monitoring System for Children," *International Journal of Engineering and Technology*, vol. 7, no. 3, pp. 137–143, 2018.
- [6] S. S. Salunkhe, S. Patil, S. Pawar, and M. Waghmode, "IoT Based Child Tracking and Safety System," *Journal of Emerging Technologies and Innovative Research (JETIR)*, vol. 10, no. 5, pp. 302–306, May 2023.
- [7] N. R. Wagh, S. R. Sutar, V. J. Kadam, S. M. Jadhav, A. S. Yadav, and V. S. Pawar, "Evaluation of IoT-Based Smart Safety Systems for Women and Children Using Machine Learning Techniques," *Scientific Reports*, vol. 16, Article no. 87, 2026, doi: 10.1038/s41598-025-29146-4.
- [8] Dr. R. Kamalraj, "A Hybrid Model on Child Security and Activities Monitoring System using IoT", *IEEE Xplore Compliant Part Number: CFP18N67-ART; ISBN:978-1-5386-2456-2*.
- [9] H. Zhang, R. Zhang, and J. Sun, "Developing Real-Time IoT-Based Public Safety Alert and Emergency Response Systems," *Scientific Reports*, vol. 15, Article no. 29056, 2025, doi: 10.1038/s41598-025-13465-7.
- [10] L. Y. Heng and I. F. B. Kamsin, "IoT-Based Child Security Monitoring System," *Atlantis Highlights in Computer Sciences*, vol. 4, pp. 467–475, 2021.
- [11] E Kusuma Kumari, K N H Srinivas, M Nandini

- Priyanka, S Murugan and T D S Sarveswararao
“Smart IOT Device for Child Safety and Tracking”
International Journal of Innovative Technology
and Exploring Engineering (IJITEE). 8(8). 2019.
pp.2278-3075.
- [12] V. Senthilkumar, R. Elavarasi, C. R. Balamurugan, S. Aarthi, P. Mithula, and K. Sandhiya, “Implementation of Child Monitoring and Tracking System Using Internet of Things,” *Industrial Engineering Journal*, vol. 53, no. 8, pp. 152–158, Aug. 2024.
- [13] E. Vamshi and M. Ravi, “IoT Based Child Safety and Monitoring System,” *Excel International Journal of Technology, Engineering and Management*, vol. 12, no. 4, pp. 248–257, Nov. 2025, doi: 10.64971/j.cph.eijtem.v12.i4.29.2025.
- [14] A. K. Sahoo, S. Mohanty, and S. K. Jena, “IoT-Based Smart Safety System for Real-Time Monitoring”, *MDPI*, vol. 20, no. 18, pp. 1–18, 2020.
- [15] Akash, moodbidri, Hamid,Shahnasser, “Child safety wearable device” issue 2017 IEEE, Sanfrancisco state university, CA:94132