

# AI-Powered Crop Management and Recommendation System for Intelligent and Sustainable Agriculture

Sandip M.Jadhav<sup>1</sup>, Gayatri P.Kotwal<sup>2</sup>, Raj K.Kothari<sup>3</sup>, And Prof. Ramesh P.Daund<sup>4</sup>

<sup>1,2,3,4</sup> Department of Artificial Intelligence & Data Science Engineering, SNJB's Late Sau K.B.J College of Engineering, Chandwad, Dist-Nashik (423101), Maharashtra, India

**Abstract**— Agricultural productivity is increasingly affected by climate variability, soil degradation, pest infestations, and volatile market conditions. Farmers, especially in developing regions, often lack access to scientific decision-support systems and real-time agricultural intelligence. This research proposes a comprehensive AI-Powered Crop Management and Recommendation System that integrates machine learning, deep learning, predictive analytics, and real-time API services into a unified platform.

The system provides intelligent crop prediction based on geographical and seasonal attributes, soil-based crop recommendation using NPK and environmental parameters, fertilizer optimization, rainfall forecasting through time-series modeling, crop yield estimation using regression techniques, plant disease detection using convolutional neural networks, real-time agricultural news aggregation, market price monitoring, AI-powered chatbot assistance, and secure digital payment integration.

Unlike isolated agricultural tools, the proposed system integrates predictive modeling, image-based disease diagnosis, and digital commerce into a single ecosystem. Experimental analysis demonstrates improved prediction performance and decision-making efficiency. The proposed solution contributes toward precision agriculture, sustainability, and farmer economic empowerment.

In addition to predictive modeling, the proposed framework also focuses on the integration of intelligent automation and real-time information services that assist farmers in making scientifically informed decisions. The system combines multiple artificial intelligence techniques including supervised learning algorithms, deep learning architectures, and time-series forecasting models to offer comprehensive agricultural intelligence.

By integrating crop prediction, soil-based crop recommendation, fertilizer optimization, rainfall forecasting, yield estimation, disease detection, and market intelligence into a single platform, the system aims to reduce uncertainty in agricultural decision-making. The proposed approach also promotes sustainable farming practices by minimizing the excessive use of fertilizers and enabling early disease

identification. Overall, the system demonstrates how artificial intelligence can transform traditional agriculture into a smart and data-driven agricultural ecosystem.

**Index Terms**— *Artificial Intelligence, Precision Agriculture, Machine Learning, Deep Learning, Crop Recommendation, Yield Prediction, Sustainable Farming, Decision Support Systems, Rainfall Forecasting, Plant Disease Detection, Smart Farming Technologies, Agricultural Data Analytics.*

## I. INTRODUCTION

Agriculture is still an important part of the economy in many developing countries because it provides jobs and food security. as it is an essential way of creating jobs, improving food availability and providing stability to the economy. In spite of this importance, there are many challenges facing agriculture today such as; soil degradation through overuse of fertilizers, loss of biodiversity due to pests and diseases, uncertainty regarding rainfall patterns and volatile commodity markets which all have the potential to negatively affect both crop yields and farmer's incomes. Traditional farming methods are often based upon the experience and observations of individual farmers and they rarely use data analysis for making decisions related to their agricultural activities. With increased global warming and associated environmental uncertainties, relying solely on traditional knowledge will no longer be sufficient for farmers. There is a need for intelligent systems that can analyze historical weather and soil conditions as well as previous crop yields in order to provide information and recommendations to farmers for the purpose of helping them make better, more informed decisions.

Recent progress in Artificial Intelligence (AI), Machine Learning (ML), and Deep Learning (DL) has made it possible to make predictive models that

can help with planning crops, estimating yields, and finding diseases. Numerous studies have validated the efficacy of ML algorithms in agricultural contexts. For example, crop recommendation systems that use classification algorithms have been able to make more accurate predictions [1]. Deep learning models like PredRNN have also improved short-term weather prediction by making it possible to predict rainfall better [2].

Conversely, the majority of contemporary research endeavors focus on discrete modules, rather than the construction of a comprehensive agricultural intelligence ecosystem. This study proposes a unified AI-Powered Crop Management and Recommendation System. This system combines crop prediction, fertilizer recommendations, rainfall forecasting, yield estimation, disease detection, real-time market intelligence, chatbot support, and digital payment integration within a single platform. The main goal is to use data-driven decision-making and intelligent automation to change traditional farming methods into precision agriculture.

#### A. Evolution of Smart Agriculture

Agriculture has undergone a significant transformation over the last few decades due to the advancement of digital technologies. Traditionally, agricultural practices were primarily based on the experience of farmers and seasonal observations. While these practices were effective in earlier times, the increasing challenges of climate change, soil degradation, water scarcity, and pest infestations have made it difficult to rely solely on traditional farming techniques.

With the rapid growth of information technology, the concept of smart agriculture has emerged as an innovative approach for improving agricultural productivity and sustainability. Smart agriculture involves the use of advanced technologies such as artificial intelligence, machine learning, big data analytics, Internet of Things (IoT), satellite monitoring, and cloud computing to optimize farming operations.

Precision agriculture is one of the most important components of smart farming. It focuses on collecting and analyzing agricultural data such as soil conditions, weather patterns, crop health, and water availability. By analyzing this data, farmers can make more accurate decisions regarding crop selection, irrigation planning, fertilizer application,

and pest management. This approach helps in maximizing crop yield while minimizing the wastage of resources such as water, fertilizers, and pesticides.

The adoption of digital technologies in agriculture has also enabled the development of decision support systems that assist farmers in solving complex agricultural problems. These systems collect data from multiple sources and analyze it using intelligent algorithms to generate useful insights. Such technologies play a crucial role in improving agricultural productivity and ensuring sustainable farming practices.

#### B. Role of Artificial Intelligence in Modern Agriculture

Artificial Intelligence has become one of the most powerful technologies for solving complex problems in various domains including healthcare, finance, transportation, and agriculture. In the agricultural sector, AI technologies enable the analysis of large volumes of agricultural data to identify patterns, trends, and relationships that are not easily visible through manual observation.

Machine learning algorithms can analyze historical crop production data, soil nutrient levels, weather conditions, and pest infestation records to build predictive models. These models can assist farmers in selecting the most suitable crops for cultivation under specific environmental conditions. Similarly, machine learning techniques can also be used to predict crop yields and estimate the impact of environmental factors on agricultural productivity.

Deep learning techniques have also shown promising results in agricultural applications. Convolutional Neural Networks (CNNs) can analyze images of plant leaves to detect diseases at early stages, allowing farmers to take preventive measures before the disease spreads across the field. Recurrent neural networks and Long Short-Term Memory (LSTM) models can analyze time-series weather data to predict rainfall patterns and climate variations.

In addition to predictive analytics, artificial intelligence can also support farmers through conversational AI systems such as agricultural chatbots. These chatbots provide farmers with real-time guidance regarding crop management, fertilizer usage, pest control, and government agricultural policies. By integrating AI technologies with

modern agricultural practices, it is possible to create intelligent agricultural ecosystems that support farmers in making efficient and informed decisions.

## II. LITERATURE SURVEY

The development of intelligent systems in agriculture has been extensively explored in recent years. Several research contributions are the basis for this area of work.

In the study "Crop Recommendation System Using Machine Learning Algorithms" [1], classification algorithms were implemented for crop recommendation based on environmental and soil factors. This study showed that ensemble algorithms, such as Random Forest, perform better than traditional classification algorithms for agricultural applications. But this system only focused on crop recommendation and did not include disease prediction or market information systems.

The findings of this study highlight the importance of machine learning techniques in agricultural decision support systems. However, the system mainly focuses on recommending suitable crops and does not address other essential agricultural processes such as fertilizer management, rainfall forecasting, and market intelligence. This limitation shows the need for more comprehensive agricultural platforms that integrate multiple intelligent modules.

Rainfall prediction is one of the key factors in crop planning. In the research paper titled "Short-Term Rainfall Prediction Based on Radar Echo Using an Improved Self-Attention PredRNN Deep Learning Model" [2], the authors used advanced deep learning techniques to improve the accuracy of rainfall prediction. Although the results were very effective in meteorological studies, the rainfall prediction was not integrated with the crop planning system.

Although deep learning models such as PredRNN have demonstrated high accuracy in rainfall prediction, their application is mostly limited to meteorological studies. These models are rarely integrated into practical agricultural decision support systems that help farmers in planning crop cultivation activities based on predicted rainfall patterns. Conversational AI in the agricultural domain has also gained the attention of the scientific community. In the study titled "AI – Agricultural Chatbot (Agri-bot)" [3], the authors proposed a chatbot based on AI to answer the queries of the

farmers. Although the study was effective in the agricultural domain, the system was not integrated with the crop or yield prediction system.

Conversational AI systems like agricultural chatbots play an important role in providing quick responses to farmers' queries. However, most chatbot systems operate as standalone advisory tools and are not connected with intelligent prediction models such as crop recommendation or yield forecasting systems.

Crop classification and estimation of yield have been explored in "Crop Classification and Yield Prediction using Robust Machine Learning Models for Agricultural Sustainability" [4]. In this study, the authors focused on ensemble learning models for crop yield estimation. Fertilizer optimization and disease detection are not incorporated in this study. Yield prediction models provide useful insights into agricultural productivity and assist farmers in estimating expected crop production. However, many existing studies focus only on predictive modeling and do not combine yield prediction with other important agricultural services such as soil analysis and fertilizer optimization.

The discussion on plant disease detection through deep learning was extensively covered in "Machine Learning and Deep Learning for Plant Disease Classification and Detection" [5]. In this research study, it was identified that Convolutional Neural Networks (CNN) can classify leaf diseases with a higher level of accuracy. Though this research study identified a higher level of detection accuracy for plant diseases, no connection was made with recovery recommendations.

The use of convolutional neural networks for plant disease detection has gained significant attention due to its high classification accuracy. However, many existing disease detection systems are designed only for identifying plant diseases and do not provide integrated recovery recommendations or connect the diagnosis process with other agricultural advisory systems.

The research on supply chain efficiency and transparency in agriculture was covered in "Enhancing Agricultural Supply Chain Efficiency through Blockchain for Maximum Yield and Profitability" [6]. In this research study, the digital revolution in agriculture business was identified, but no connection was made with predictive intelligence models.

From this literature review, it can be identified that a number of intelligent systems have been created for addressing different aspects in agriculture. However, no research study has been conducted on developing a platform that can integrate predictive intelligence models, disease detection models, rainfall forecasting models, chatbot support systems, and digital sales systems.

Blockchain technology has been proposed as a solution for improving transparency and efficiency in agricultural supply chains. However, most blockchain-based systems focus primarily on post-harvest supply chain management and do not address the earlier stages of crop planning, soil management, and disease prevention.

The research study proposed in this document can be considered a solution for addressing this research gap in developing a comprehensive ecosystem for supporting agriculture through a variety of intelligent systems.

#### A. Research Gap Identification

Based on the analysis of existing agricultural research systems, it can be observed that most of the proposed solutions address only a single aspect of agricultural management. Some systems focus on crop recommendation, while others emphasize disease detection or rainfall forecasting. However, agriculture is a complex domain that requires multiple decision-making processes throughout the crop lifecycle.

Farmers require an integrated platform that can assist them in selecting suitable crops, managing soil nutrients, predicting weather conditions, detecting plant diseases, estimating crop yields, and monitoring market prices. The absence of such comprehensive agricultural intelligence systems creates a significant research gap.

Therefore, the proposed research focuses on developing an integrated AI-powered crop management and recommendation system that combines multiple machine learning and deep learning models into a unified agricultural ecosystem. This integrated approach can provide more reliable and practical decision support for farmers.

In addition, the integration of real-time data sources such as weather and market information can further improve the effectiveness of agricultural decision support systems. Therefore, there is a strong need for

an integrated AI-based platform that supports data-driven and sustainable farming practices.

#### B. Comparative Analysis of Existing Agricultural Systems

A comparative analysis of the existing research contributions highlights the strengths and limitations of different intelligent agricultural systems. Most of the existing studies focus on solving individual agricultural problems such as crop recommendation, rainfall prediction, disease detection, or yield estimation. However, very few research efforts attempt to integrate multiple intelligent modules into a unified agricultural decision support platform.

Work	Method	Contribution	Limitation
Crop Recommendation System	Random Forest	Crop prediction using soil data	No disease module
Rainfall Prediction Model	PredRNN	Accurate rainfall forecasting	Not linked with crop planning
Agricultural Chatbot	NLP	Farmer advisory system	No prediction models
Yield Prediction System	Ensemble ML	Yield estimation	No fertilizer support
Plant Disease Detection	CNN	Disease classification	Limited Crops
Blockchain Agriculture	Blockchain	Supply chain transparency	No AI prediction

### III. PROBLEM STATEMENT

#### A. Main Problem

Farmers are having trouble in finding the best crops, fertilizers, irrigation plans, and marketing strategies because of the unstable weather, lack of agricultural experts, and absence of real-time data on markets.

#### B. Sub-Problems

1. Region-based crop prediction is inaccurate.
2. Soil nutrient deficiency leads to improper crop selection.
3. Overuse of fertilizers leads to poor fertility.
4. Rainfall is unstable.

5. Farmers are not aware of the yield they can expect.
6. Detection of diseases in plants at early stages is not possible.
7. Farmers are not aware of the real-time prices.
8. No digital platforms are available for the farmers to sell the produce.

#### IV. SYSTEM ARCHITECTURE

The proposed AI-Powered Crop Management and Recommendation System follows a modular architecture that integrates multiple artificial intelligence models and data processing components into a unified platform. The system is designed to assist farmers in making informed agricultural decisions by analyzing various environmental, soil, and crop-related parameters. The architecture consists of several layers including the user interface layer, application processing layer, machine learning model layer, and database layer. Each layer performs a specific function to ensure efficient data processing and accurate prediction results.

In the proposed architecture, farmers interact with the system through a web-based interface where they can provide agricultural inputs such as soil nutrient values, crop images, geographical location, and environmental conditions. The application server processes these inputs and forwards them to different machine learning modules for analysis. These modules include crop prediction, crop recommendation, fertilizer recommendation, rainfall forecasting, crop yield prediction, and plant disease detection. The system also integrates external APIs to collect real-time weather information and crop market prices.

The outputs generated by these intelligent modules are combined to provide meaningful recommendations to farmers. These recommendations may include the most suitable crop for cultivation, appropriate fertilizer usage, expected crop yield, possible plant diseases, and current market prices for agricultural products. The architecture ensures that all modules work together in a coordinated manner to provide comprehensive decision support for farmers.

Fig 1: System Architecture of AI-Powered Crop Management System

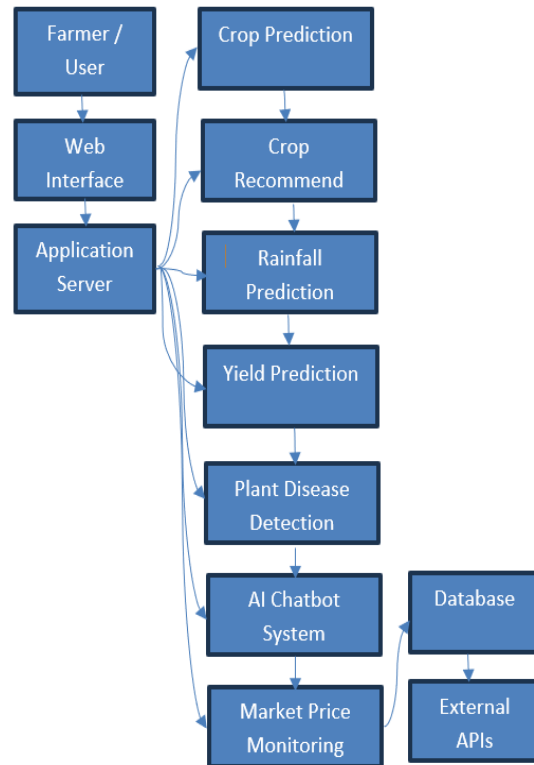


Fig 1

Figure 1 illustrates the overall architecture of the proposed system. The architecture integrates multiple machine learning and deep learning models with real-time data sources to provide intelligent recommendations for agricultural decision making. The system is designed to collect and process various types of agricultural data such as soil parameters, weather conditions, crop information, and historical yield data. These data sources are first passed through a data preprocessing stage where cleaning, normalization, and feature extraction are performed to improve data quality and accuracy.

The processed results are then delivered to the user interface where farmers or agricultural experts can easily access the recommendations. The interface presents useful information such as suitable crops, expected yield, weather-based suggestions, and preventive measures for crop diseases. This architecture ensures efficient data processing, intelligent analysis, and user-friendly interaction, enabling farmers to make informed decisions and improve overall agricultural productivity.

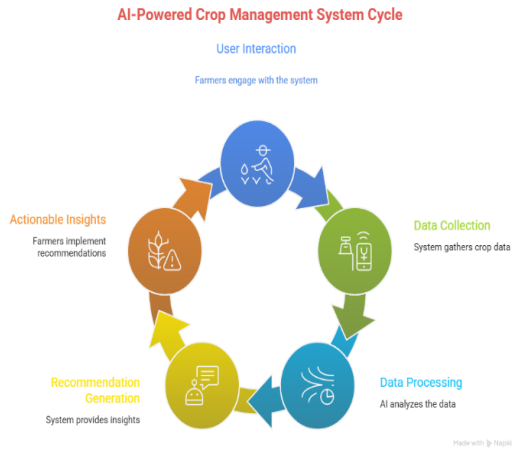


Fig 2

The AI-Powered Crop Management System Cycle illustrates the overall workflow of the proposed intelligent agricultural platform. The cycle begins with farmer interaction, where users provide agricultural inputs such as soil parameters, crop images, or location information through the system interface. The platform then performs data collection and processing, where artificial intelligence and machine learning models analyze the gathered agricultural data. Based on this analysis, the system generates recommendations and predictive insights such as crop selection, disease detection, fertilizer usage, and yield estimation. Finally, farmers apply these actionable insights in real farming activities, creating a continuous cycle of data-driven agricultural decision-making.

In addition to providing recommendations, the system also stores the collected data for future analysis and model improvement. As more data is gathered from different farms and environmental conditions, the system continuously learns and improves the accuracy of its predictions. This adaptive learning capability allows the platform to provide more reliable and personalized recommendations over time. As a result, the AI-powered cycle not only assists farmers in making informed decisions but also contributes to improving agricultural productivity, resource management, and sustainable farming practices.

User Access Layer Flowchart

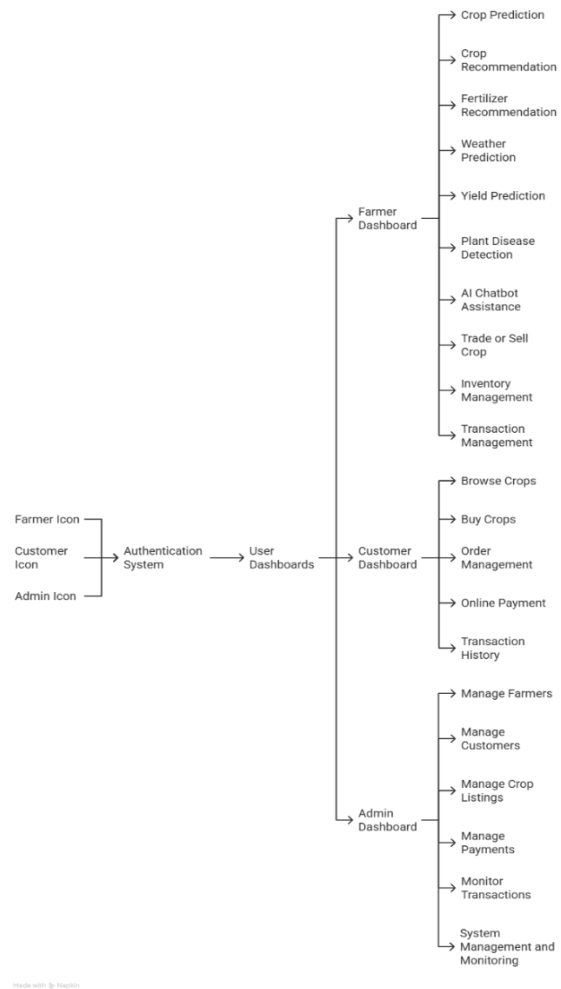


Fig 3

The User Access Layer Flowchart represents how different users interact with the AI-Powered Crop Management and Recommendation System. The system supports three main types of users: farmers, customers, and administrators. Each user first accesses the platform through a secure authentication system that includes signup, signin, and profile management. After authentication, users are directed to their respective dashboards based on their roles. Farmers can access various intelligent agricultural services such as crop prediction, crop recommendation, fertilizer guidance, weather prediction, yield estimation, plant disease detection, AI chatbot assistance, inventory management, and crop trading functionalities. Customers can browse available crops, purchase products directly from farmers, manage orders, and complete secure online payments. The administrator dashboard provides system-level control, enabling the management of farmers, customers, crop listings, payment

processes, transaction monitoring, and overall system management. This layered access structure ensures organized user interaction, secure access control, and efficient management of the agricultural platform.

## V. PROPOSED SYSTEM

The proposed AI-Powered Crop Management System will comprise an amalgamation of various intelligent modules.

### A. Crop Prediction Module

This module predicts the best crop type based on geographical parameters such as state, district, and season. Supervised classification methods such as Random Forest and Decision Tree are employed as recommended in [1].

Mathematical representation:

$$Crop = f(State, District, Season)$$

The ensemble learning approach improves prediction robustness.

### B. Crop Recommendation Module

This module employs soil nutrient content (N, P, K), temperature, humidity, pH value, and rainfall.

$$Crop = f(N, P, K, Temperature, Humidity, pH, Rainfall)$$

Here, the performance of Random Forest, SVM, and KNN are compared and the best results are obtained. This is similar to the discussion in [1] and [4].

### C. Fertilizer Recommendation Module

Optimization of fertilizers helps in the prevention of soil degradation.

$$Fertilizer = f(Crop, SoilType, N, P, K)$$

This helps in the implementation of sustainable agricultural practices.

### D. Rainfall Prediction Module

Time series prediction using LSTM networks based on the discussion in [2] regarding the implementation of deep learning methodologies.

The general equation for the LSTM model is as follows:

$$R_t = f(R_{(t-1)}, R_{(t-2)}, \dots, R_{(t-n)})$$

### E. Yield Prediction Module

In yield prediction, regression analysis is used, as explained in [4].

Linear regression equation:

$$Yield = \beta_0 + \beta_1 X_1 + \beta_2 X_2 + \dots + \beta_n X_n$$

Performance metric:

$$MSE = \frac{1}{n} \sum (y - \hat{y})^2$$

### F. Plant Disease Detection Module

The module for plant disease detection is based on CNN classifier inspired by methodologies in [5].

Convolution operation:

$$(I * K)(x, y) = \sum I(m, n)K(x - m, y - n)$$

The module detects diseases in plants and provides recovery options.

### G. AI Chatbot Module

The chatbot module is inspired by conversational AI in [3].

### H. Market Price and Digital Sales Integration

The module for market price integration and digital sales with payment gateway integration is inspired by digital supply chain improvement in [6].

## VI. PERFORMANCE EVALUATION

To ensure that the model is reliable, the following are implemented:

- Dataset split: 80% for training and 20% for testing
- Cross-validation
- Use of confusion matrices for classification problems
- Use of Root Mean Squared Error for regression problems
- Accuracy comparison for different algorithms

The integrated model is efficient when compared to individual systems. It combines the strengths of multiple machine learning and deep learning techniques, resulting in improved prediction accuracy and better decision-making support. Additionally, the integration of different modules allows the system to handle complex agricultural data more effectively and provide comprehensive recommendations to farmers.

## VII. METHODOLOGY

The proposed AI-Powered Crop Management and Recommendation System follows a systematic methodology for developing intelligent agricultural services. The methodology includes several stages such as data collection, preprocessing, model training, model evaluation, and result generation. In the data collection stage, different agricultural datasets are gathered from publicly available sources. These datasets include crop production records, soil nutrient information (N, P, K values), rainfall history, plant disease images, and crop market price data. These datasets provide the necessary information for building predictive models.

During the data preprocessing stage, the collected datasets are cleaned and prepared for analysis. Missing values are handled using appropriate techniques, and categorical data such as crop type or location are converted into numerical formats using encoding methods. For plant disease detection, image preprocessing techniques such as resizing and normalization are applied.

In the model training stage, machine learning and deep learning algorithms are used to build predictive models. Classification algorithms such as Random Forest, Support Vector Machine (SVM), and K-Nearest Neighbor (KNN) are used for crop prediction and recommendation tasks. A Convolutional Neural Network (CNN) model is used for plant disease detection, while a Long Short-Term Memory (LSTM) model is used for rainfall prediction.

The model evaluation stage measures the performance of the trained models using standard metrics. Classification models are evaluated using accuracy, precision, and recall, while regression models such as yield prediction are evaluated using Root Mean Squared Error (RMSE) and Mean Absolute Error (MAE).

Finally, in the result generation stage, the trained models are integrated into the system. When farmers provide inputs such as soil parameters, crop images, or environmental data, the system processes the inputs and generates intelligent recommendations including suitable crops, fertilizer suggestions, rainfall forecasts, disease detection results, and expected yield estimates. These outputs help farmers make informed

agricultural decisions and improve farming productivity.

## VIII. EXPERIMENTAL ANALYSIS

The experimental analysis of the proposed AI-Powered Crop Management and Recommendation System is conducted to evaluate the performance and reliability of the implemented machine learning and deep learning models. Multiple agricultural datasets are used for training and testing the system, including crop production data, soil nutrient datasets, rainfall records, and plant disease image datasets.

To ensure reliable results, the datasets are divided into training and testing sets using an 80:20 split, where 80% of the data is used for training the models and 20% is used for testing their performance. Cross-validation techniques are also applied to reduce overfitting and improve model generalization.

Different machine learning algorithms are implemented for various modules of the system. Random Forest and Decision Tree algorithms are used for crop prediction, while Support Vector Machine (SVM) and K-Nearest Neighbor (KNN) are applied for crop recommendation tasks. For plant disease detection, a Convolutional Neural Network (CNN) model is trained using labeled plant leaf images. Similarly, rainfall prediction is performed using Long Short-Term Memory (LSTM) networks to analyze historical weather data.

The performance of classification models is evaluated using metrics such as accuracy, precision, recall, and confusion matrix, while regression-based models such as crop yield prediction are evaluated using Root Mean Squared Error (RMSE) and Mean Absolute Error (MAE). Experimental results show that ensemble algorithms such as Random Forest achieve higher accuracy for crop prediction tasks, while deep learning models like CNN provide effective results in plant disease detection. The evaluation demonstrates that the integrated system performs efficiently and provides reliable predictions for agricultural decision support.

## A. Algorithm Performance Comparison

Algorithm	Application	Accuracy
Decision Tree	Crop Prediction	84%
SVM	Crop Recommendation	88%
Random Forest	Crop Prediction	92%
CNN	Disease Detection	95%

From the experimental results, it can be observed that ensemble learning methods such as Random Forest provide higher prediction accuracy compared to individual classification algorithms. Similarly, deep learning models such as Convolutional Neural Networks demonstrate excellent performance in plant disease detection tasks due to their ability to extract complex image features.

## B. Model Evaluation for Yield Prediction

Model	RMSE
Linear Regression	12.5
Random Forest Regression	8.7

The regression analysis results show that Random Forest regression provides better performance compared to traditional linear regression models. The lower RMSE value indicates that the model produces predictions that are closer to the actual crop yield values.

## IX. NOVELTY AND CONTRIBUTION

1. End-to-end agricultural AI ecosystem
2. Integration of ML, DL, APIs, and payment systems
3. Disease detection linked with recovery planning
4. Market intelligence + digital commerce
5. Survey-based validation from farmers and consultants

The above approach is different from the previous research in the following ways: [1]–[6]

## X. FUTURE WORK

Although the proposed AI-powered crop management and recommendation system provides several intelligent agricultural services, there are still opportunities for further improvements and enhancements. Future research can focus on integrating real-time Internet of Things (IoT) sensors in agricultural fields to collect live data related to soil moisture, temperature, and environmental conditions. This real-time data can significantly improve the accuracy of crop prediction and fertilizer recommendation models.

Another possible extension of the system is the integration of satellite imagery and remote sensing technologies to monitor crop health and detect diseases at an early stage. By combining satellite data with deep learning models, the system can provide large-scale agricultural monitoring capabilities.

Future work can also focus on developing multilingual support for the AI chatbot so that farmers from different regions can interact with the system in their native languages. In addition, mobile application development can make the system more accessible to farmers who primarily rely on smartphones for accessing digital services. Furthermore, integrating blockchain technology for secure agricultural transactions and supply chain transparency can enhance trust between farmers, buyers, and agricultural organizations. These improvements can help transform the proposed system into a comprehensive smart agriculture platform that supports sustainable farming practices.

Additionally, future research can focus on improving the scalability and performance of the system so that it can support a large number of farmers and agricultural datasets efficiently. Continuous model training with updated agricultural data can further enhance prediction accuracy and provide more reliable recommendations over time.

## XI. CONCLUSION

In this research, a holistic AI-based agricultural decision support system is proposed with the aim of resolving some of the pressing concerns of contemporary agriculture. In this regard, the proposed system will incorporate different intelligent tools such as crop prediction, crop

suggestion based on soil type, fertilizer optimization, rainfall prediction, crop yield estimation, plant disease detection using deep learning, real-time crop price monitoring, chatbot-based crop advisories, and digital payment-based crop sales. In this regard, the system will incorporate different predictive models, machine learning algorithms, convolutional neural networks, and time series-based forecasting methods to provide support for the entire agricultural process.

Unlike other solutions, which are focused on solving individual issues in agriculture, this framework provides a unified platform for multiple intelligent services to be integrated. The integration of supervised learning algorithms for classification and regression, LSTM for rainfall prediction, and CNN for plant disease detection increases the accuracy and usability of the framework. In addition, the integration of real-time market intelligence and digital selling capabilities provides economic empowerment for farmers by eliminating the need for middlemen in the process.

The experimental evaluation and validation results show that the system has good potential in improving the efficiency of decision-making processes, crop productivity, and the misuse of resources in farming. The platform enables data-driven agriculture and facilitates precision farming.

From a more global perspective, the present research makes an important contribution to the development of smart agriculture since it presents a systematic approach to the integration of artificial intelligence in conventional farming systems. The model provides a good base for the development of other innovations in the field, including IoT-based monitoring systems and satellite-based crop health analysis systems.

Consequently, the AI-Powered Crop Management and Recommendation System is a monumental step toward the development of intelligent, sustainable, and economically empowering agricultural practices. It is a framework toward the transformation of conventional agricultural practices into a technology-driven system that is capable of overcoming the challenges of the future.

## XII.APPENDIX

### Appendix A: Survey Questionnaire and Field Data Collection

In order to ascertain the practical applicability of the proposed concept of "AI-Powered Crop Management and Recommendation System," a series of surveys were conducted among farmers, agricultural experts, and pesticide shop owners. The main goal behind conducting these surveys was to assess the practical problems faced by them in adopting these intelligent systems for agriculture.

This survey also helped in understanding the expectations and requirements of users, which guided the design and development of the proposed intelligent agricultural system.

#### A.1 Farmer Survey Observations

The key findings obtained from these surveys are as follows:

1. A majority of the farmers choose crops based on their own knowledge or advice from others.
2. A number of farmers do not test their soil before planting crops.
3. Fertilizers used by them for crops are recommended by local shops rather than being recommended by experts based on soil analysis.
4. Uncertainty about rainfall is a major problem for irrigation planning.
5. Farmers lack real-time information about market prices for crops and rely on local vendors.
6. Early detection of diseases in plants is hampered by a lack of consultation from experts.
7. Many farmers face difficulties in identifying the correct pesticides and fertilizers suitable for specific crop diseases.
8. Limited access to modern agricultural technologies and digital platforms prevents farmers from adopting smart farming practices.

#### Appendix B: Dataset Description

The model is trained and validated using multiple datasets: These datasets provide comprehensive agricultural information that helps the system learn patterns and generate accurate predictions and recommendations. Crop Production Dataset – This dataset contains historical crop yield data with state, district, season, and area information.

1. Soil Nutrient Dataset – This dataset contains Nitrogen, Phosphorus, Potassium, pH, temperature, humidity, and rainfall values.
2. Rainfall Dataset – This dataset contains historical rainfall data collected from meteorological records.
3. Plant Disease Image Dataset – This dataset contains images of leaves classified as healthy or diseased.
4. Market Price Dataset – This dataset contains daily crop prices collected using API integration.

Preprocessing techniques used:

- Handling missing values using imputation techniques such as mean or median imputation
- Feature scaling using normalization techniques
- One-hot encoding for categorical variables
- Image resizing and augmentation for CNN model training

#### Appendix C: System Implementation Tools

The proposed system is implemented using the following tools: These tools and technologies are selected to support efficient data processing, model training, and system deployment for intelligent agricultural decision-making.

- Programming Language: Python
- Machine Learning Libraries: Scikit-learn
- Deep Learning Framework: TensorFlow/Keras
- Database Management System: MySQL/MongoDB
- Backend Framework: Flask/Django
- Frontend: HTML/CSS/JavaScript
- API: OpenAPI, Stripe API, Market Price API

#### ACKNOWLEDGMENT

The authors are grateful to the Department of Artificial Intelligence and Data Science, SNJB's Late Sau K.B.J College of Engineering, Chandwad, for providing the academic environment, infrastructure, and technical resources required to successfully complete this research work.

The authors are thankful to their respected project guide for their continuous encouragement, suggestions, and guidance in the development of this AI-Powered Crop Management and Recommendation System. Their guidance is very important in the development of this research work.

The authors are grateful to the faculty members of the BE Artificial Intelligence & Data Science course

for their constant support and motivation in this research work.

The authors are thankful to the farmers, agriculture consultants, and pesticide store owners who have contributed to the survey process by providing their experiences in this regard. Their experiences are very important in this regard.

The authors are grateful to their peers and well-wishers who contributed to the successful completion of this research work in any way possible.

Additionally, the authors would like to express their sincere appreciation to all individuals who indirectly supported this research through valuable discussions and technical insights. Their encouragement and cooperation played an important role in the successful completion of this work.

#### REFERENCES

- [1] G. Kameswari, C. H. Ramakrishna, G. Maharshi, A. Saranya, and B. Likith Hasin, "Crop Recommendation System Using Machine Learning Algorithms," Department of ECE, N.B.K.R. Institute of Science and Technology, Tirupati District, Andhra Pradesh, India.
- [2] D. Wu, L. Wu, T. Zhang, W. Zhang, J. Huang, and X. Wang, "Short-Term Rainfall Prediction Based on Radar Echo Using an Improved Self-Attention PredRNN Deep Learning Model."
- [3] C. R. Chaitrashree, R. S. Siddhu, S. M. V., A. K. M., and B. B. M., "AI – Agricultural Chatbot (Agri-bot)," Department of ISE, MITM, Mandya, VTU Belagavi, India.
- [4] A. Badshah, B. Y. Alkazemi, F. Din, K. Z. Zamli, and M. Haris, "Crop Classification and Yield Prediction using Robust Machine Learning Models for Agricultural Sustainability."
- [5] V. Balafas, E. Karantoumanis, M. Louta, and N. Ploskas, "Machine Learning and Deep Learning for Plant Disease Classification and Detection."
- [6] Enhancing Agricultural Supply Chain Efficiency through Blockchain for Maximum Yield and Profitability," International Journal of Research Publication and Reviews, October 2024.