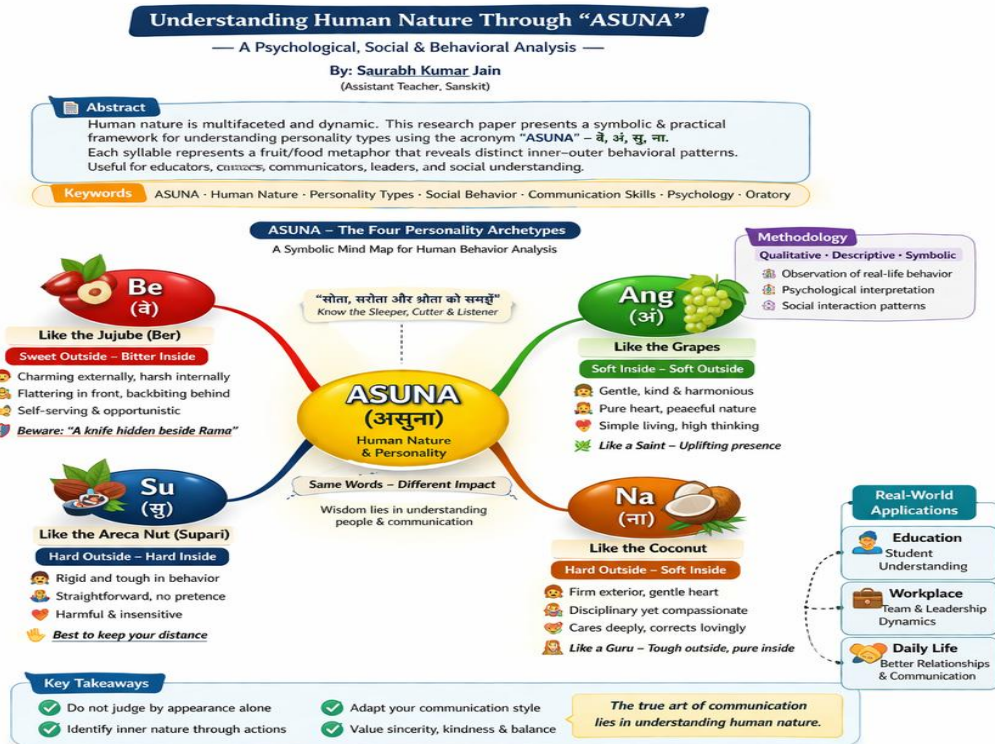


Psychological, Social and Behavioral Analysis of Human Nature through Be.ASUNA

Saurabh Kumar Jain
TGT Sanskrit Sainik School Ambikapur



Abstract—Human nature is multidimensional, complex, and dynamic. The true assessment of an individual’s personality cannot be made solely on the basis of outward behavior; rather, it should be evaluated through internal qualities, tendencies, and responses to different situations.

This research paper presents a symbolic and analytical study of four major types of human nature based on the word “ASUNA.” The four syllables — Be, Ang, Su, Na — symbolically represent four different personality types comparable to Jujube (Ber), Grapes, Areca Nut (Supari), and Coconut respectively.

This study proves useful in understanding communication skills, social behavior, and personality development. It also highlights that effective

communication and oratory skills can transform ordinary ideas into meaningful and impactful expressions.

Index Terms—ASUNA, Human Nature, Personality Analysis, Social Behavior, Communication Skills, Psychology

I. INTRODUCTION

Communication plays a vital role in human life. The exchange of ideas forms the foundation of societal development. However, it is often observed that people tend to ignore or overlook commonly heard

ideas. On the contrary, when the same ideas are presented effectively with proper examples and symbolism, they become more impactful and meaningful.

The success of a speaker depends largely on understanding the psychology of the audience. If a speaker fails to recognize the difference between a sleeping listener, a critical listener, and an attentive listener, the communication becomes ineffective.

This research paper analyzes various dimensions of human nature through the symbolic interpretation of the word **ASUNA**. This analysis is not only academically important but also highly useful in practical life.

II. OBJECTIVES OF THE STUDY

The major objectives of this research are:

- To analyze human nature through the word "ASUNA"
- To understand personality through symbolic classification
- To provide guidance for identifying different types of individuals
- To highlight the importance of communication and oratory skills

III. METHODOLOGY

This study is based on Descriptive, Analytical, and Symbolic methods. The four syllables of the word "ASUNA" are used to represent four different personality types.

The study is based on:

- Daily life observations
- Social behavior
- Psychological understanding
- Practical experiences

This is a qualitative study aimed at improving behavioral understanding rather than establishing rigid theoretical frameworks.

IV. ANALYSIS OF HUMAN NATURE THROUGH "ASUNA"

4.1 "BE" — The Jujube (Ber) Personality

The syllable "Be" represents individuals similar to Jujube (Ber) fruit. Such individuals appear attractive,

sweet, and friendly externally, but internally they may hold harsh or negative feelings.

The most significant characteristic of such personalities is dual behavior. They praise in front but criticize behind. These individuals may act opportunistically and prioritize personal gain.

The proverb "A knife hidden beside Lord Rama" perfectly describes such individuals — appearing harmless but potentially harmful.

Identifying such people can be difficult; therefore, one should remain cautious while dealing with them.

4.2 "ANG" — The Grapes Personality

The syllable "Ang" represents individuals similar to Grapes. These individuals are soft, gentle, and kind both internally and externally.

Their behavior is consistent and sincere. They believe in simple living and high thinking. These individuals promote harmony, positivity, and moral values in society.

Their influence is long-lasting and constructive. Such personalities resemble saints whose thoughts and actions inspire others.

4.3 "SU" — The Areca Nut (Supari) Personality

The syllable "Su" represents individuals similar to Areca Nut (Supari). Such individuals are hard both externally and internally.

They are straightforward but lack emotional sensitivity. They do not change their nature like a chameleon and are often rigid in their behavior.

Their actions may sometimes cause harm to others due to their lack of empathy. It is generally advisable to maintain distance from such individuals to avoid emotional or social harm.

4.4 "NA" — The Coconut Personality

The syllable "Na" represents individuals similar to **Coconut**. These individuals appear hard and strict externally but are soft, kind, and compassionate internally.

Such individuals often take tough decisions for the benefit of others. The Guru-disciple relationship is a perfect example of this personality type.

Although strict in nature, their intentions are noble and constructive. These personalities are highly valuable for society as they maintain discipline along with compassion.

V. DISCUSSION

The above analysis clearly shows that human nature is complex and diverse. A person's personality cannot be judged merely based on outward appearance or behavior.

The four personality types represented by **ASUNA** demonstrate the diversity present in society. Understanding these personalities helps in building better relationships and improving communication.

This study also emphasizes the importance of communication skills. Effective presentation enhances understanding and acceptance of ideas.

VI. CONCLUSION

This study of human nature through **ASUNA** provides deep insight into personality analysis. It helps in identifying different types of individuals and understanding how to interact with them effectively.

Therefore, it is essential to develop a balanced perspective while dealing with people. Recognizing positive personalities and maintaining distance from harmful ones helps in personal growth and social harmony.

This study is useful in education, social development, leadership, and personal growth.