

Foot Step Power Generation Using Arduino

¹Narwate Rameshwari Chakradhar, ²Kadam Akanksha Nagnath, ³Gavhane Sandhya Navnath,
⁴Mr.Deshmukh.K.M

¹Student, Electronic and Telecommunications, Shri Shivaji Polytechnic Institute, Parbhani

⁴Professor, Electronic and Telecommunications, Shri Shivaji Polytechnic Institute, Parbhani

Abstract- The Footstep Power Generation System presents an innovative approach to harvesting renewable energy from human footsteps using piezoelectric technology. By embedding piezoelectric sensors into walkways, staircases, mechanical energy generated through pressure is converted into electrical energy via the piezoelectric effect. The system incorporates rectifier circuits, voltage converters, a TP4056 charging module, and lithium-ion batteries (18650 cells) to efficiently convert, regulate, and store the harvested energy. This stored power can be used to operate low-power devices such as LED strips, sensors, and mobile chargers, especially in high-foot-traffic areas like malls, railway stations, and smart cities. The system is compact, eco-friendly, and scalable, offering a sustainable energy solution with minimal maintenance requirements.

Despite challenges like low energy output per step, advancements in piezoelectric materials and efficient circuit design enhance its practicality. This project demonstrates the potential of human movement as viable energy source, promoting sustainable urban infrastructure and contributing to the development of smart, green cities.

Keywords- Piezoelectric sensor, Footstep energy, AD620 amplifier, Arduino, I2C LCD, Renewable energy, Energy harvesting)

I. INTRODUCTION

The increasing global demand for sustainable and renewable energy has driven the development of innovative technologies that can harvest energy from unconventional sources. One such promising approach is footstep power generation, which involves converting the mechanical energy generated by human movement into usable electrical energy. As urbanization continues to rise and cities grow more crowded, tapping into everyday human activity like walking becomes a practical and eco-friendly solution for addressing energy needs.

Footstep power generation systems primarily rely on piezoelectric materials, which have the unique ability to generate an electric charge when subjected to mechanical stress. When a person walks over a surface embedded with piezoelectric sensors, the pressure exerted by each footstep is converted into a small amount of electrical energy. Although the output from a single step is minimal, the cumulative effect in high-foot-traffic areas such as railway stations, airports, shopping malls, schools, and public walkways can generate a substantial amount of energy over time.

This harvested energy is first passed through a rectifier circuit to convert the alternating current (AC) output from the sensors into direct current (DC). It is then filtered and regulated to make it compatible for storage in a rechargeable lithium-ion battery. A TP4056 charging module is used in the system to safely and efficiently charge the battery while providing features like overcharge, over-discharge, and short-circuit protection. The stored energy can later be used to power various low-power electronic devices such as LED lights, mobile chargers, and environmental sensors, even during periods when no footsteps are occurring.

II. LITERATURE REVIEW

literature review for Footstep Power Generation using Arduino explores the intersection of piezoelectricity, renewable energy harvesting, and embedded systems. The core concept is "crowd farming"—capturing the kinetic energy from human locomotion and converting it into usable electrical power.

2.1 Theoretical Foundation: The Piezoelectric Effect Most research in this field relies on the Piezoelectric Effect. When mechanical stress (a footstep) is applied to specific materials like Lead Zirconate Titanate (PZT) or Quartz, they generate an electric charge.

Mechanism: Pressure shifts the internal crystalline structure, creating a potential difference.

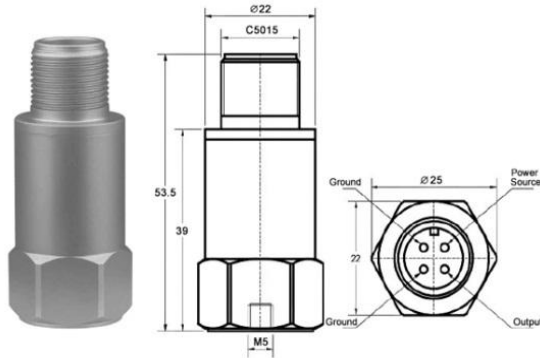


Fig: piezoelectric accelerometer

2.2 System Architecture

A standard footstep power generation system is generally divided into four functional blocks:

Component	Function
Piezoelectric Transducers	The "sensors" that convert kinetic energy to AC voltage.
Rectifier Circuit	Converts the harvested AC voltage into DC (usually via a bridge rectifier).
Storage Element	Capacitors or Rechargeable Batteries (e.g., Li-ion) to buffer the energy.
Arduino Controller	Monitors voltage levels, manages charging, and displays data on an LCD.

2.3 Efficiency Challenges

A common theme in literature is the low conversion efficiency. Single footsteps generate energy in the range of milliwatts (mW). To power significant loads (like streetlights), researchers propose placing these tiles in high-traffic areas like subway stations, stairs, or gym floors.

Analysis

Piezoelectric: High durability, compact, but low current.

Electromagnetic (Rack and Pinion): Uses a gear system to spin a DC motor. High power output but bulky and mechanically complex.

Electrostatic: Uses changing capacitance; less common in footstep projects due to complexity.

5. Summary of Gaps in Literature

While the proof-of-concept is well-documented, there is a lack of long-term studies regarding the mechanical fatigue of piezoelectric tiles. Most projects focus on the "initial spark" rather than the 5-year durability of the sensors under constant human weight.

III. PROPOSED MIX DESIGN AND METHODOLOGY

This project involves the systematic design, integration, and testing of a footstep power generation system using piezoelectric technology. The process begins by embedding piezoelectric sensors under a platform or walking surface. When mechanical pressure is applied through footsteps, these sensors generate alternating current (AC) due to the piezoelectric effect. The AC output from the sensors is passed through a bridge rectifier to convert it into direct current (DC). A filtering circuit is then used to smooth out the fluctuations in the DC output. Since the voltage from the piezo sensors is typically low, a DC-DC converter boosts the voltage to a suitable level (around 5V) required for charging ensure reliable performance.

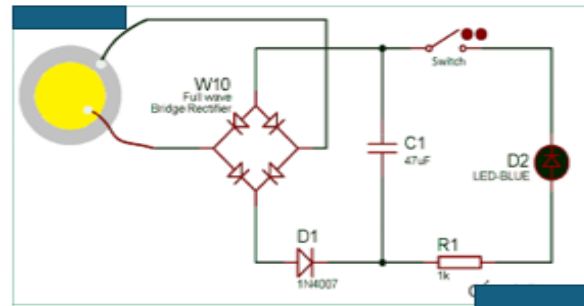


Fig: circuit diagram

IV. HOW IT WORKS

1. **Energy Capture:** Piezoelectric sensors are installed in a floor or a mat. When pressure from a footstep is applied, the sensors convert the mechanical stress into a small AC electrical charge due to the piezoelectric effect.
2. **Power Conditioning:** The low-voltage AC signal is then processed through a bridge rectifier circuit (using diodes like 1N4007) and a capacitor to convert it into a stable DC voltage suitable for electronics and battery charging.
3. **Microcontroller**

Management: An Arduino Uno (or similar microcontroller) acts as the central control unit, monitoring the incoming voltage and managing the energy storage and display.

4. Storage: The regulated DC power is stored in a rechargeable battery (like a Li-ion cell) or supercapacitor for later use.
5. Monitoring & Application: The Arduino often interfaces with an LCD Display to show real-time data, such as generated voltage or number of steps.

V. PERFORMANCE ANALYSIS

- Renewable Energy: It converts universally available human kinetic energy into usable electricity, promoting clean, green energy.
- Scalability: The modular design allows for expansion in high-traffic areas like malls, airports, and train stations to generate more power.
- Real-time Monitoring: The Arduino microcontroller provides real-time feedback on energy generation, which helps in system optimization and user engagement.
- Cost-Effectiveness: The system can be developed at a relatively low cost using readily available components, making it feasible for implementation in developing areas.
- Reliability: It is not dependent on weather conditions, unlike solar or wind power.

VI. LIMITATIONS & CHALLENGES

- Low Power Output: A single footstep or tile generates a relatively small amount of power (e.g., studies note outputs around 2-3V per crystal or up to 8.29V in a prototype). Large-scale generation requires extensive sensor arrays.
- Energy Storage is Crucial: Due to the intermittent nature of footsteps, efficient energy storage (batteries or supercapacitors) is essential for consistent power delivery.
- Durability and Maintenance: Long-term operation in high-traffic areas raises concerns about the durability of the sensors and potential need for

frequent maintenance and lubrication of mechanical parts (if a mechanical system is used).

- Efficiency Concerns: Early attempts, such as those by DARPA for in-boot generators, found that the extra energy required by the user to wear the devices outweighed the power generated.

VII. SUSTAINABILITY BENEFITS

- Renewable and Clean Energy Source: The primary benefit is generating electricity from human movement, an abundant and constantly available source, without consuming limited natural resources or producing greenhouse gas emissions.
- Reduced Reliance on Fossil Fuels: By providing an alternative, localized power source for low-power devices, it helps lessen the strain on traditional power grids and the dependence on non-renewable energy sources like coal and oil..
- Ideal for High-Traffic Urban Areas: The system is particularly effective in densely populated areas like shopping malls, train stations, airports, and public walkways, where continuous foot traffic can yield a reliable power supply for specific applications.
- Integration with Smart Cities: The technology can be integrated into smart city infrastructure, powering various Internet of Things (IoT) devices like environmental sensors or smart lighting systems, contributing to more energy-efficient and resilient urban environments.
- Low Maintenance and Cost-Effective Long-Term: Once installed, the system requires minimal maintenance and offers long-term cost savings on energy bills, facilitating sustainable urban development.

VIII. FUTURE SCOPE

Smart City Infrastructure: Integration into sidewalks, stairways, and high-traffic public areas for self-powered lighting and sensors.

Hybrid Energy System: Combining with solar panels and wind turbines for a comprehensive, renewable energy solution.

IOT Integration: Using Arduino to send data on foot traffic and power generation to cloud platforms for analysis.

Improved Efficiency: Advanced piezoelectric materials or triboelectric nanogenerators (TENG) could increase energy output beyond current low-power capabilities.

Security Integration: Using RFIDs to authorize access to stored energy for mobile charging in public spaces

IX.. CONCLUSION

The Footstep Power Generation System presents a novel and sustainable approach to meeting the growing demand for renewable energy by harnessing the untapped potential of human motion. Utilizing piezoelectric technology, the system effectively converts mechanical energy generated from footsteps into electrical energy, making use of what would otherwise be wasted. This eco-friendly method not only contributes to environmental conservation but also encourages innovative thinking in the field of clean energy solutions.

The system successfully demonstrates the integration of piezoelectric sensors, bridge rectifiers, DC-DC converters.

REFERENCES

- [1] Li Tianze, Zhang Xia, Jiang Chuan, & Hou Luan. (2009). Analysis of the characteristics of piezoelectric sensor and research of its application.
- [2] Kumar, D., Chaturvedi, P., & Jejurikar, N. (2014). Piezoelectric energy harvester design and power conditioning.
- [3] KNP computer and Robotics Institute guidance