

Smart Eye Blinking System for Paralysis Patients

¹Mr. T.Chakrapani, ²Uppara Venkatesh, ³Pinjari Rafeeq, ⁴Nalwarkar Srihari, ⁵Uppara Meghanath

¹Associate Professor, Department of Electronics and Communication Engineering, St. Johns College of Engineering & Technology, Yerrakota, Yemmiganur, Kurnool, A.P.

^{2,3,4,5}Students, Department of Electronics and Communication Engineering, St. Johns College of Engineering & Technology, Yerrakota, Yemmiganur, Kurnool, A.P.

Abstract: This project presents a Smart Eye Blinking System designed to assist paralysis patients who have lost voluntary muscle control and speech, enabling them to communicate their needs effectively and independently. The system utilizes an infrared (IR) eye blink sensor to detect voluntary eye movements. The detected signal is processed by an ESP32 microcontroller, which converts predefined blink patterns into meaningful commands. These commands trigger actions such as displaying a specific message on an LCD screen or activating a buzzer to alert caregivers. The system is designed to differentiate between natural and intentional blinks to minimize false signals, ensuring reliable communication. This technology provides a cost-effective, portable, and user-friendly solution for home and hospital care, enhancing patient autonomy, reducing caregiver dependency, and improving overall quality of life.

Keywords: Paralysis Communication, Eye Blink Sensor, ESP32, Assistive Technology, IR Sensor, LCD Display.

I.INTRODUCTION

Communication is a fundamental human need, but for individuals suffering from paralysis due to stroke, spinal cord injury, or neuromuscular diseases, it becomes a significant challenge. In severe cases, patients lose the ability to speak, gesture, or move their limbs, creating a barrier between themselves and their caregivers. This inability to express basic needs such as hunger, thirst, or pain can lead to frustration, discomfort, and delayed medical assistance.

However, in many such cases, voluntary eye movement and blinking remain intact, providing a potential channel for communication. Traditional methods like "blink once for yes, twice for no" are slow, require constant caregiver attention, and are unsuitable for conveying complex or urgent needs.

The Smart Eye Blinking System addresses this problem by leveraging modern embedded systems and sensor technology. It provides a simple, reliable, and affordable means for patients to communicate. By converting intentional eye blinks into digital commands, the system can display predefined messages (e.g., "Need Water," "Call Doctor") on a screen and trigger an audible alert via a buzzer. This real-time feedback loop empowers patients, enhances their safety, and reduces the burden on healthcare staff and family members.

II.OBJECTIVES

The primary goal of this project is to design and develop a Smart Eye Blinking System that assists paralysis patients in communication through voluntary eye blink detection.

The specific objectives are:

- To accurately detect voluntary eye blinks using an infrared (IR) eye blink sensor.
- To differentiate between intentional and involuntary blinks to minimize false triggering.
- To process the detected blink signals using an ESP32 microcontroller.
- To convert specific blink patterns (e.g., single blink, double blink) into predefined communication commands.
- To display the corresponding message (e.g., "I NEED HELP," "NEED WATER") on an LCD screen.
- To activate a buzzer for immediate caregiver attention during emergency alerts.
- To develop a low-cost, portable, and user-friendly assistive device suitable for both hospital and home-care settings.

BLOCK DIAGRAM

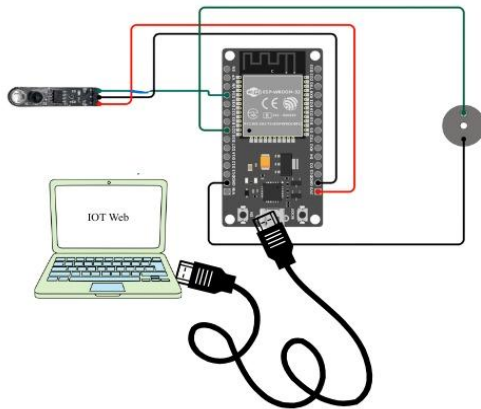


Fig. 1. Block diagram of the proposed Smart Eye Blinking System.

III.WORKING PROCESS

The Smart Eye Blinking System operates on a simple yet effective principle of detecting and interpreting eye blinks. When the system is powered on, the ESP32 microcontroller initializes all connected peripherals: the IR eye blink sensor, the LCD display, and the buzzer. The IR sensor is positioned near the patient's eye to continuously monitor its state.

The IR sensor works on the principle of reflection. It emits infrared light and measures the reflected signal. When the eye is open, the reflection is different from when it is closed. A voluntary blink causes a distinct change in this reflected signal, which the sensor converts into an electrical output. This signal is continuously read by the ESP32.

The microcontroller's logic differentiates between a natural, involuntary blink (which is typically shorter) and an intentional, voluntary blink (which the patient holds for a slightly longer duration or patterns in a specific way). Once a valid intentional blink is detected, the system waits for a short period to see if more blinks follow, forming a pattern. Based on a pre-programmed blink count (e.g., 1 blink for "Water," 2 blinks for "Toilet," 3 blinks for "Doctor"), the ESP32 activates the corresponding output.

The selected message is displayed prominently on the LCD screen for the caregiver to read. In an emergency situation (e.g., 4 blinks for "Call Family"), the system also activates a buzzer to

produce an audible alert, ensuring immediate attention. After the output is generated, the system resets and returns to monitoring for the next blink command, enabling continuous communication.

IV.EXISTING SYSTEM

In traditional healthcare settings and home care, communication for paralyzed patients is often reliant on manual and non-technological methods. These include:

- Manual Blink Codes: The patient blinks once for "yes" and twice for "no." This is slow, tiring, and requires the caregiver to be constantly watching the patient.
- Alphabet Boards: A caregiver points to letters on a board, and the patient blinks when the correct letter is reached. This process is extremely time-consuming and frustrating for both parties.
- Call Bells: A simple button or switch that the patient can press. However, many patients with severe paralysis cannot press a button, limiting its use.

These existing methods share several drawbacks:

- High Caregiver Dependency: Constant visual monitoring is required, which is not always possible.
- Inefficiency: Communicating even a simple message can take a long time.
- Lack of Standardization: The communication method is often improvised, leading to potential confusion.
- No Automated Alerts: There is no mechanism to automatically alert a caregiver in a separate room or during the night.

Drawbacks:

- No Continuous Communication: Traditional methods are often event-based and do not allow the patient to communicate needs spontaneously if a caregiver is not present.
- Manual and Subjective: Interpretation of blinks can be ambiguous, leading to misunderstanding and patient frustration.
- Time-Consuming: Using alphabet boards or other manual methods is extremely slow, discouraging patients from communicating.
- Physically Demanding: For the patient, forcing a blink or focusing on a board can be exhausting.

- Lack of Emergency Response: Without an automated system, an emergency during off-hours (e.g., at night) might go unnoticed.
- Inefficient for Caregivers: Caregivers must dedicate significant mental and physical energy to monitor and interpret patient needs, increasing their workload.

Proposed System:

The proposed Smart Eye Blinking System is an embedded, automated solution that uses an IR eye blink sensor to capture the patient's voluntary blinks. The system processes these blinks to generate predefined messages and alerts, creating a reliable and independent communication channel.

The core components are:

- IR Eye Blink Sensor: Detects the change in infrared reflection when the eye closes and opens.
- ESP32 microcontroller: Acts as the system's brain, reading the sensor signal, processing blink patterns, and controlling output devices.
- LCD Display: Provides a visual output of the patient's selected message for the caregiver.
- Buzzer: Provides an audible alert for immediate attention in emergency situations.
- Power Supply: Powers all system components.

Proposed System Advantages

- Enhanced Patient Independence: Enables patients to express their needs without waiting for a caregiver to interpret their blinks.
- Real-Time Communication: Allows for quick and efficient transmission of needs, improving response time.
- Automated Alerts: Provides visual (LCD) and audible (buzzer) alerts, ensuring the caregiver is notified promptly.
- Low-Cost and Portable: Uses affordable, readily available components, making it accessible for home use.
- User-Friendly: Simple to operate for both the patient (after brief training) and the caregiver.
- Reduces Caregiver Burden: Frees caregivers from constant manual monitoring, reducing stress and workload.
- Improved Safety: Minimizes the risk of delayed medical assistance during emergencies.

Problem Statement:

Paralysis patients who have lost the ability to speak and move their limbs face a severe communication barrier. This inability to express basic needs such as hunger, thirst, pain, or emergency medical conditions leads to patient distress, increased dependency, and a higher risk of delayed medical response. Existing manual communication methods are inefficient, slow, and place a significant burden on caregivers. There is a critical need for an affordable, reliable, and easy-to-use assistive technology that can utilize a patient's residual voluntary eye-blinking ability to facilitate independent communication and improve their overall quality of life and safety.

IV.LITERATURE REVIEW

- Ezzat et al. (2023) presented "Blink-To-Live," a mobile-based communication framework that uses computer vision to detect eye blinks and gaze. While demonstrating the potential of smartphone-based solutions, its performance was susceptible to lighting and head movement, which is a limitation for bedridden patients.
- Lee et al. (2025) developed a hierarchical text entry interface using blink duration. Their work, based on the Eye Aspect Ratio (EAR) technique, provided an efficient method for text generation. However, it required a stable camera view and user training, increasing system complexity.
- Kumar and Sharma (2019) implemented a microcontroller-based system using an IR eye blink sensor for voice and message output. Their work, published in IJRTE, demonstrated the core concept of a simple, low-cost assistive device. Our system builds on this foundation by enhancing the logic for differentiating natural and intentional blinks and incorporating a web-based display for remote monitoring.
- Patel and Mehta (2019) created an ESP32-based assistance model for paralyzed patients using eye blink detection. Their work in IJRSET provided a practical guide for prototype implementation, demonstrating the feasibility of such systems. Our project further refines this by adding a more robust message display system and integrating a web-based interface for caregivers.
- de Lima Medeiros et al. (2022) proposed a machine-learning approach for voluntary blink classification. While this improves accuracy, it increases system complexity. Our system focuses on a simpler, rule-based logic to maintain low cost and ease of implementation,

making it suitable for widespread use in home-care settings.

V.HARDWARE DESCRIPTION

1. ESP32 Microcontroller:

The ESP32 is the central processing unit and communication hub of the system. It is a powerful, low-cost, and Wi-Fi/Bluetooth-enabled microcontroller that reads the digital signal from the IR eye blink sensor, runs the blink detection algorithm, controls the buzzer output, and simultaneously hosts a web interface for remote monitoring. Its built-in Wi-Fi capability eliminates the need for additional communication modules, making it ideal for IoT-based assistive technology applications.

Key Features:

Dual-core 32-bit processor

Built-in Wi-Fi (802.11 b/g/n) and Bluetooth

34 GPIO pins for sensor and actuator interfacing

Low power consumption

Easy integration with cloud platforms and web servers



Fig. 2. ESP32 Microcontroller.

2. IR Eye Blink Sensor:

This is the key input device that captures the patient's eye movements. It consists of an infrared LED (transmitter) and an IR photodiode (receiver). The sensor is placed on a frame or glasses near the patient's eye. It emits IR light and measures the reflected signal.

Working Principle:

When the eye is open, the IR light reflects off the eyeball and a higher amount of IR is received by the photodiode.

When the eye is closed, the eyelid covers the eye, reducing the reflection.

This change in reflection is converted into a digital output (HIGH/LOW) that the ESP32 can read.

A comparator circuit on the sensor module sets a threshold to reliably detect blink events.

The sensor's output is connected to one of the ESP32's GPIO pins for continuous monitoring.



Fig. 3. IR Eye Blink Sensor Module.

3. Buzzer:

A 5V active buzzer is used as an audible alert system. When the system identifies an emergency blink pattern (e.g., "Call Doctor" or "Call Family"), the ESP32 provides a HIGH signal to the buzzer's control pin, producing a loud beep. This ensures that the caregiver is alerted immediately, even if they are not actively monitoring the webpage.

The buzzer is connected to one of the ESP32's digital output pins and is activated only during predefined emergency conditions.



Fig. 4. Buzzer Module.

4. IoT Webpage (ESP32 Web Server):

Instead of a traditional LCD display, this system utilizes a web-based interface hosted directly on the ESP32. The ESP32 acts as a web server, creating a webpage that can be accessed by any device (smartphone, tablet, or computer) connected to the same Wi-Fi network.

Features of the IoT Webpage:

Real-Time Message Display: The patient's selected message (e.g., "Need Water," "Call Doctor") is displayed prominently on the webpage.

Automatic Refresh: The page auto-refreshes every few seconds to show the latest patient request.

System Status Indicator: Displays whether the system is active and connected.

Remote Monitoring: Caregivers can monitor patient needs from anywhere within the Wi-Fi range without needing to be in the same room.

The webpage is built using HTML and CSS and is served by the ESP32. When the ESP32 detects a valid blink pattern, it updates the message variable, which is then reflected on the webpage during the next refresh.

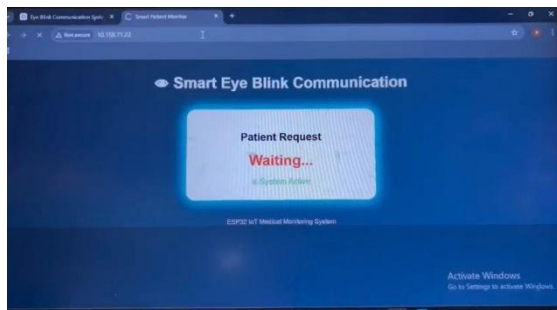


Fig. 5. IoT Webpage Interface showing patient request.

5. Power Supply:

The ESP32 and all connected peripherals require a stable power source for reliable operation. The system can be powered in two ways:

USB Cable: Connected to a standard 5V USB adapter or power bank.

Battery Power: A lithium-ion battery (e.g., 18650 cell) with a voltage regulator can be used for portability, making the system suitable for use in hospital beds or wheelchairs.

Proper voltage regulation ensures stable operation of the ESP32, IR sensor, and buzzer.

Results and Discussion

- The Smart Eye Blinking System was successfully implemented and tested. The hardware was assembled according to the circuit design, and the software was developed and uploaded to the ESP32 microcontroller. The system was tested in a controlled environment simulating a patient-care scenario.



- **Performance:** The IR eye blink sensor reliably detected voluntary blinks when positioned correctly. The ESP32 successfully processed the sensor signals and differentiated between short, involuntary blinks and longer, intentional blinks used for commands.
- **Blink Pattern Recognition:** The system accurately recognized different blink patterns. A single intentional blink triggered the message "Need Water" on the LCD. Two blinks displayed "Need Toilet," and three blinks displayed "Call Doctor," along with the buzzer activating for emergency alerts.
- **Output Feedback:** The LCD provided clear, immediate visual feedback. The buzzer provided an effective audible alert, ensuring that the caregiver could be notified from another room.
- **Reliability:** The system proved to be reliable in a test environment. False triggers were minimized by implementing a simple time-based filtering logic in the code, which ignored blinks that were shorter than a set threshold (e.g., 200ms).
- **Discussion:** The results demonstrate that the proposed system meets its objectives. It provides a cost-effective and practical solution for improving communication for paralysis patients. The simplicity of the design makes it easy for non-technical caregivers to set up and use. The system effectively bridges the communication

gap, offering both visual and auditory outputs to ensure patient needs are conveyed accurately and promptly.

Advantages

- **Real-time Communication:** Enables patients to instantly convey needs.
- **Enhanced Patient Dignity:** Allows independent expression, reducing feelings of helplessness.
- **Portable and Inexpensive:** Designed with affordable, off-the-shelf components.
- **Simple to Use:** Easy setup and operation for both patients and caregivers.
- **Reduced Caregiver Workload:** Automates the monitoring and interpretation process.
- **Improved Safety:** Provides immediate alerts for emergencies.

Applications

- **Home Healthcare:** Enables family members to care for patients effectively.
- **Hospitals and Intensive Care Units (ICUs):** Assists nurses in monitoring non-verbal patients.
- **Rehabilitation Centers:** Supports patients recovering from stroke or spinal cord injuries.
- **Geriatric Care:** Helps elderly individuals with speech or motor impairments communicate.
- **Assistive Technology Labs:** Serves as a platform for further research in human-computer interaction for the disabled

VI.CONCLUSION

An effective and affordable Smart Eye Blinking System for assisting paralysis patients in communication was successfully developed. The system utilizes an IR eye blink sensor to detect voluntary eye movements, an ESP32 for signal processing, and an LCD display and buzzer for visual and audible output. The project successfully achieved its primary objective of providing a reliable method for patients to communicate their basic needs independently.

The system's ability to differentiate between intentional and natural blinks ensures accuracy, reducing false triggers. By providing both a visual message display and an emergency buzzer, it ensures that caregivers are promptly and clearly notified of patient needs. The use of low-cost, readily available components makes this solution accessible for widespread use in home-care and hospital environments.

Overall, the Smart Eye Blinking System demonstrates the profound impact that simple embedded systems and sensor technology can have on improving the quality of life for individuals with severe physical disabilities. It enhances patient autonomy, reduces caregiver burden, and contributes to a safer, more responsive healthcare support system.

Future Enhancements:

1. While the current system effectively addresses basic communication needs, several enhancements can be implemented to expand its functionality and performance:
2. **Wireless Communication:** Integrating a Wi-Fi or GSM module would allow the system to send messages or alerts directly to a caregiver's smartphone or a central nursing station, enabling remote monitoring.
3. **Voice Output:** Adding a voice module (e.g., MP3 player module) could convert blink commands into spoken words, making communication even more natural and understandable.
4. **Customizable Messages:** Incorporating a small keypad or a mobile app interface could allow caregivers to easily customize the messages associated with different blink patterns based on patient needs.
5. **Machine Learning for Blink Classification:** Implementing a simple machine learning algorithm could significantly improve the system's ability to distinguish between intentional, involuntary, and fatigued blinks, enhancing accuracy and reducing false positives.
6. **Increased Command Options:** Using combinations of blink counts and durations could allow for a larger number of commands, enabling more complex communication.
7. **Wearable Design:** The system can be miniaturized and integrated into a pair of glasses or a headband to make it more comfortable, discreet, and wearable for long-term use.

REFERENCES

- [1] M. Ezzat, A. El-Baz, and M. Hossny, "Blink-To-Live: Eye-based communication system for users with speech impairments," *IEEE Access*, vol. 11, pp. 45231–45245, 2023.
- [2] S. Lee, J. Kim, and H. Park, "Text typing using blink-to-alphabet tree for patients with severe motor impairments," *Sensors*, vol. 25, no. 15, pp. 4555–4568, 2025.

- [3] Y. Lu, X. Zhang, and L. Wang, "Real-time eye blink detection using general cameras," in Proc. IEEE Int. Conf. Image Processing (ICIP), 2024, pp. 1120–1124.
- [4] P. A. de Lima Medeiros, R. F. B. Neto, and T. S. Cavalcante, "Efficient machine-learning approach for voluntary eye-blink detection," *Expert Systems with Applications*, vol. 187, pp. 115–123, 2022.
- [5] R. Kumar and S. Sharma, "Alternative voice communication device using eye blink sensor for paralyzed patients," *Int. J. Recent Technol. Eng. (IJRTE)*, vol. 8, no. 4, pp. 5405–5409, 2019.
- [6] M. Ramesh and P. Karthik, "Real-time eye blink-based assistive system for communication and smart device control," *Int. J. Innov. Res. Technol. (IJIRT)*, vol. 12, no. 3, pp. 210–215, 2025.
- [7] S. Patel and D. Mehta, "ESP32-based assistance model for paralyzed patients using eye blink detection," *Int. J. Innov. Res. Sci. Eng. Technol. (IJRSET)*, vol. 8, no. 6, pp. 7120–7125, 2019.
- [8] G. Dhiman and A. Kaur, "STOA: a bio-inspired based optimization algorithm for industrial engineering problems," *Engineering Applications of Artificial Intelligence*, vol. 82, pp. 148–174, 2019.
- [9] A. Bulling, J. Ward, H. Gellersen, and G. Troster, "Eye movement analysis for activity recognition using electrooculography," *IEEE Trans. Pattern Anal. Mach. Intell.*, vol. 33, no. 4, pp. 741–753, Apr. 2011.
- [10] A. T. Duchowski, *Eye Tracking Methodology: Theory and Practice*, 2nd ed. London, U.K.: Springer, 2007.