

# Ai-Based Real-Time Railway Anomaly and Track Damage Detection System Using Deep Learning

V.Maheskumar<sup>1</sup>, S. Srinath<sup>2</sup>, C. Surendhar<sup>3</sup>, R. Venkatesan<sup>4</sup>

<sup>1,2,3,4</sup>*Department of Computer Science and Engineering, Paavai Engineering College, Namakkal, Tamil Nadu, India*

**Abstract**—Smart Railway Anomaly Detection System is an innovative system developed using artificial intelligence technology. It works in real-time to improve railway operations safety and efficiency. The Smart Railway Anomaly Detection System makes use of new technologies such as computer vision, machine learning, and real-time video analytics for anomaly detection and hazard mitigation along railway tracks. Cameras fitted into locomotives, drones, and rail tracks capture images that are analyzed by powerful deep learning algorithms such as You Only Look Once (YOLO) and Convolutional Neural Networks (CNNs). CNNs use spatial information to recognize the position of different objects such as rubbish, trespassers, wildlife, and railway tools. Also, CNN-based algorithms detect tiny cracks along railway tracks. This proposed system will reduce dependency on human inspection processes since it will provide constant surveillance of the railway network. The system will use a multiple module structure including foreground detection, feature extraction, object detection, object recognition, and track damage detection that will make sure that all anomalies are identified. With this proposed system, it is easy to alert authorities about any issues that may occur, making it easier for them to respond and perform their duty.

**Index Terms**—Anomaly Detection, Computer Vision, Deep Learning, Object Detection, Railway Safety, Real-Time Monitoring, YOLO Algorithm.

## I. INTRODUCTION

The Smart Railway Anomaly Detection System is an intelligent technology-driven approach aimed at improving railway safety and efficiency through real-time monitoring and detection of anomalies. The system adopts computer vision algorithms along with advanced deep learning models for analyzing video footage collected through high-definition cameras that can be mounted on trains, drones, or trackside cameras.

It concentrates on recognizing potential threats such as obstacles, intruders, animals, and damage to the structure of the railway track. By overcoming manual inspection systems, the system provides real-time monitoring and detection of problems. For the purpose of detecting anomalies in a real-time environment, the smart railway anomaly detection system uses intelligent deep learning models including You Only Look Once (YOLO) and convolutional neural networks (CNN) for detecting structural damages. These models are trained using a lot of data to make sure that they work well under all kinds of environmental conditions. The processing pipeline involves various steps such as detecting the foreground, extracting the features, detecting objects, and recognizing objects that help detect anomalies accurately. Apart from this, the model has the ability to send alerts immediately after the anomaly has been detected, ensuring that appropriate corrective measures can be taken at once. By responding quickly to the anomalies, this framework helps in reducing the chances of any accident or disruption in operations. This intelligent and automated monitoring system not only increases detection accuracy, but also makes the process independent of human efforts and reduces costs.

## Problem statement

The current railway monitoring systems are facing several problems because of their dependence on human inspection processes and conventional surveillance practices. First, the current process of rail inspection based on manual inspection by the human eye is inefficient and takes much time. It is labor-intensive, requiring lots of effort for inspecting long railway lines located at remote areas. Second, manual inspection can be conducted only periodically, creating breaks and increasing the likelihood of overlooking

some flaws. Third, it is important to note that currently applied surveillance systems do not have capabilities for real-time processing and smart analysis of data received from sensors and CCTVs. For example, CCTV cameras can be used in railways but mostly provide raw data for further manual review. Additionally, such systems cannot be used to detect intricate threats like cracks, partly blocked tracks, or rapidly moving objects; hence, they are not suitable for current railway safety purposes. Secondly, these systems have been found to be inaccurate, difficult to adapt to dynamic environments, and lack scalability. Railway tracks encounter different environmental conditions, changing weather, and lighting situations that complicate the process of detection using conventional methods. The use of conventional technologies to detect potential defects on railway lines leads to false alarms and even failure to recognize minor defects. Thirdly, as railway systems develop, it is difficult for these systems to operate in a continuously intelligent manner due to limited scalability and adaptability capabilities.

## II. RELATED WORK

Gui, Shengxi, [1] In this research paper, we offer a complete analysis of the application of deep learning models for object detection in remote sensing images. It is shown how modern developments in CNNs and transformers have helped tremendously in improving the detection accuracy in satellite and aerial images. This research paper focuses on several object detection architectures including YOLO, Faster R-CNN, and SSD. The advantages and disadvantages of each architecture are analyzed based on the ability of the model to handle large and high-resolution images. Feature extraction is an important aspect of enhancing detection accuracy. The review goes into detail on how deep learning algorithms outperform other algorithms in remote sensing applications. The availability of datasets as well as annotated data plays an important part in training good models. The review includes information about metrics used to evaluate objects in the field of object detection. Some of the trends that have emerged include using vision transformers for enhanced feature representation. Different architectures are analyzed based on accuracy and efficiency. Deep learning has had a revolutionary

impact on remote sensing object detection, but there are still some challenges.

Vaishnavi, K., et al. [2] The aim of this paper is to analyze and evaluate real-time object detection algorithms which use deep learning models. This study will discuss the design principles of the most commonly used real-time object detection models (YOLO and SSD), and how they achieve efficient object detection in live camera feeds. It discusses the significance of attaining the right balance between efficiency and accuracy while performing real-time object detection. The paper delves into the architecture and functioning of the deep learning models that are based on convolutional neural networks, and how they perform various operations on live images to detect features. It explains the use of bounding boxes and probabilities of different classes to identify objects from the live feed. The authors evaluate the performance in terms of precision, recall, and speed of frames per second. In addition, the paper contrasts some of the deep learning models in terms of speed of inference and accuracy. The research tackles issues such as computational efficiency and hardware requirements. The authors demonstrate that optimized deep learning models can work at high speeds with acceptable accuracy levels. Additionally, the authors recognize the significance of utilizing GPU for improved performance. According to the findings, deep learning allows efficient object detection in real time. Furthermore, the paper asserts that YOLO models are most appropriate for tasks that require fast and accurate detection.

Amjoud, Ayoub Benali, and Mustapha Amrouch, et al. [3] The aim of the selected review paper is to compare different techniques used for object detection through deep learning algorithms, more specifically, CNNs and vision transformers. The paper presents the differences between classic models of CNNs and novel transformer models and how they operate. For example, the former uses convolution and pooling to get information about the spatial structure of an image, while the latter uses attention mechanism to obtain global image relations. Moreover, it introduces several state-of-the-art object detectors such as Faster R-CNN, YOLO, and DETR and examines their features in the aspect of accuracy and computational efficiency. Some of the issues that have been highlighted in this study include the need for

massive amounts of data, as well as the complexity involved in training the models. The authors emphasize the significance of the efficiency of the models for real-world applications. The study analyzes benchmark measures and datasets utilized to evaluate object detection approaches. The trend toward the use of transformer models has also been analyzed.

Sharma, Teena, et al. [4] This research paper deals with problems and solutions related to detecting objects and perceiving scenes in adverse weather conditions through the use of deep learning algorithms. The focus is on rainy, foggy, snowy, and low-light conditions, which negatively impact the performance of computer vision applications. The paper highlights how weather affects the input image data by introducing noise, blur, and poor visibility, making object detection harder. The authors discuss a range of preprocessing steps that are used to improve the quality of the images before object detection tasks are performed. The paper goes on to discuss how deep learning architectures, including CNN and YOLO algorithms, can be modified to work in adverse weather conditions. Finally, the authors describe data augmentation as a way of improving the robustness of machine learning models to simulate adverse weather conditions during the training phase. The article contrasts the efficiency of various models under different weather conditions. It also explains how methods such as image enhancement and domain adaptation may be used to enhance detection performance. The authors highlight the weaknesses in existing models under extreme weather conditions. They emphasize that integrating several methods could yield better results. The paper stresses the importance of developing more generalized models that can accommodate real-world scenarios. In conclusion, deep learning models have proven to be efficient although they continue to encounter some problems under harsh weather conditions. The results of this study are important for areas such as self-driving cars and railway surveillance systems.

Helmi, Wesam, et al. [5] The current paper offers an overview of remote sensing and machine learning applications in improving safety on railways. Different methods of remote sensing that are currently being applied include satellite images, drones, and sensors onboard the trains. How different machine learning algorithms are implemented in order to identify any

anomalies is analyzed. Different examples of machine learning applications include the identification of obstacles and detection of hazards. In addition, the role played by integrating multiple types of information in order to obtain more accurate results is explained. Finally, the paper analyzes the most popular machine learning models utilized in railway safety studies, such as CNN and YOLO detection models. Challenges discussed in the article include data quality issues, variations in environment, and system scalability. In terms of content, the paper analyses the use of remote sensing for covering wide-ranging areas of railway infrastructure. Moreover, it evaluates the role of automation in limiting the effort required for manual inspections. The paper makes comparisons between traditional railway safety practices and modern approaches based on artificial intelligence technology. The strengths of real-time monitoring and prediction through machine learning are emphasized in the discussion. The authors indicate that the combination of remote sensing with machine learning increases the effectiveness of detecting potential dangers. Future opportunities for research are related to enhancing models used in practice.

Zhang, Qiang, et al. [6] This paper proposes a system for the detection of obstacles on trains through the use of deep learning approaches in order to increase train safety and avoid accidents. This work addresses the problem of recognizing obstacles that are situated on railway tracks and include humans, animals, and other elements using image processing. Deep learning methods are used in order to detect obstacles, specifically CNNs and object detection models are utilized in order to process images obtained by the train's cameras. The proposed model is intended to work in real-time mode, thereby allowing detecting threats in due time during train operation. The new approach enhances the accuracy of obstacle detection, surpassing that achieved by conventional image processing approaches. In addition, the research looks into issues such as lighting differences, motion blurring, and environmental interference. Evaluation is done through measures such as accuracy, precision, and recall. The findings show that the model performs well in various scenarios. The paper recognizes the impact of artificial intelligence in streamlining railway safety operations. The efficiency of computing is another concern in the research work, which guarantees real-

time execution. The possibility of adopting the model in intelligent transportation systems is emphasized. In conclusion, the research finds deep learning-based obstacle detection beneficial to railway safety.

Rahman, et al. [7] The main aim of this research work is the development of an obstacle detection system in real time for railway tracks based on deep neural networks. The key goal of the study is to recognize the obstacles like human beings, animals, and other items that can create hurdles in the way of moving trains. For this purpose, the research work uses the deep learning techniques of object detection models to extract meaningful information about video frames taken from railways. The deep neural networks are used to process video information in real time and detect the obstacles. This paper explains the convolutional neural networks for feature extraction and classification purposes. The paper focuses on the efficiency of model development in dealing with continuous data from cameras. In analyzing the effectiveness of the system, the paper assesses its performance based on several factors including accuracy, precision, recall, and inference times. According to the paper, the model is highly effective in detecting obstacles with considerable consistency. In addition, the paper discusses some of the issues that may arise while deploying AI-based systems, including occlusions, object size variation, and environmental variables. Finally, the paper argues for the need to have strong training sets for the improvement of the algorithm's ability to generalize. The paper shows that DNNs perform better than traditional methods in obstacle detection.

Li, Shao Jia, et al. [8] DF-YOLO is presented in this paper as a novel object detection technique that can be used to detect foreign objects from power transmission lines. While the area of application of the algorithm is the power grid, it is evident that the proposed model would be applicable for rail safety detection problems too. In the research, the conventional YOLO model is modified to include state-of-the-art feature extraction methods to achieve better detection results. The problem statement of interest is to detect small and distant objects that cannot be easily detected using the conventional models. The suggested DF-YOLO network performs better in terms of precision and recall when compared to the existing YOLO algorithms. The research work involves conducting various

experiments to justify the efficiency of the proposed algorithm. The researchers have used established methods of performance assessment like the mean Average Precision (mAP) in their study. The significance of the optimization of the models for real-time applications has been emphasized by the researchers. Efficiency and model complexity have also been discussed in the study. The improved network has been proven capable of delivering efficient results with faster processing speed. The study makes valuable contributions in developing efficient object detection networks for vital surveillance purposes.

Li, Hui, et al. [9] An enhanced method based on YOLOv3 for foreign object detection in overhead transmission lines is proposed in this research paper. These enhancements are based on improvement in the performance of foreign object detection by enhancing the accuracy of detection, particularly for small objects. In this work, YOLOv3 network structure is altered by tuning feature extraction and selection of anchors. Additionally, some changes have been incorporated in the backbone of the network to enhance the discriminability of features. This paper provides a detailed explanation of these alterations. Experiments are conducted on several foreign object datasets using the proposed algorithm. The assessment of the model performance has been done through the use of metrics like precision, recall, and mean average precision (mAP). The significance of having the balance between accuracy and efficiency in computation has been emphasized. There have been issues discussed concerning the detection of objects in complicated backgrounds and diverse illumination. This improved model is capable of dealing with these kinds of issues. It has been found to perform efficiently in terms of speed as well as accuracy. There has been an emphasis on the application of the model to safety-critical surveillance. This paper suggests that the optimization of the YOLO models can greatly improve their performance. The improved YOLOv3 is found to be effective for the detection of foreign objects in real time.

Lainsa, et al. [10] This research proposes a new method for rail anomalies detection based on zero-shot texture classification and deformation prediction via regression. The paper addresses an issue related to rail anomalies detection when it is not required to have

large labeled datasets covering all potential classes of abnormalities. Zero-shot learning principles are applied to achieve generalization of the model to unknown classes. The process of texture analysis that aims to detect abnormalities in the rail surface is described in detail. Regression is utilized for estimating the degree of deformation within track structures. The benefits of the proposed solution are demonstrated with emphasis on zero-shot learning application and texture classification. The proposed technique is tested using datasets generated through experimentation for evaluating its effectiveness. The outcomes highlight how the proposed model is capable of spotting anomalies using less amount of training data. In comparison with other conventional supervised learning-based techniques, the paper highlights that the proposed technique is more adaptable and scalable to be applied under real-life scenarios. The authors point out that the technique holds immense potential for the design of an anomaly detection mechanism in the field of railways. The paper takes into account various issues arising due to less availability of data.

### III. EXISTING METHODOLOGY

The current anomaly detection framework in railways is mainly based on classical approaches that include manually conducted inspection and observation of railway tracks carried out by personnel. During this process, the field inspector visually examines the rail tracks for any faults, obstacles, and irregularities. Although it may work effectively in the identification of problems, it is very laborious, time-consuming, and needs considerable manpower, particularly in cases where the railway track stretches for several miles. This process is limited to manual operations and therefore does not offer an easy way of conducting inspections at a higher frequency and consistency level. At times, classical technologies like CCTV cameras and sensors have been used for the monitoring of rail tracks. Such technologies can gather visual images or record specific physical parameters but do not possess intelligent algorithms for detecting anomalies. In consequence, the current systems are not able to provide constant real-time monitoring or detect smaller and more complicated flaws like small cracks and underlying structural problems. The lack of capability in detecting these types of problems poses a high risk of potential dangers that could cause accidents and even delay

operations. In summary, the current methods employed are not only ineffective but unreliable and unable to fulfill present-day safety requirements.

### IV. PROPOSED METHODOLOGIES

This project outlines a novel Smart Railway Anomaly Detection System that offers an AI-based solution for monitoring rail networks using computer vision and machine learning techniques. In contrast to conventional practices that rely on manual inspection or basic image analysis software, this innovative system adopts the latest technology of cameras mounted on trains, drones, and rail infrastructure to collect visual data constantly. The collected visual information is analyzed via state-of-the-art algorithms including YOLO for object detection and convolutional neural network models for recognizing any possible cracks. It can effectively detect obstacles and other hazards such as debris, animals, unauthorized individuals on rail lines, and malfunctioning equipment. This system works based on the multi-module framework which encompasses different stages such as foreground detection, feature extraction, object detection, object recognition, and damage detection to the tracks. The system is built using powerful technologies such as YOLO to identify all objects and CNNs to analyze minute details regarding potential damage on rail infrastructures. Additionally, the system will alert and notify rail authorities in real time in case of any irregularity, which allows for prompt response and preventive measures. The automation of the monitoring process helps avoid the need for human intervention in the inspection process, thus reducing the margin of error. In essence, the system is efficient and facilitates predictive maintenance while providing constant monitoring irrespective of the location.

#### METHODOLOGY

##### FRAMEWORK CONSTRUCTION

The framework construction module forms the backbone of the Smart Railway Anomaly Detection System by defining the overall architecture and workflow of the system. It integrates all the essential components required for data acquisition, processing, analysis, and alert generation into a unified structure. This module establishes how different modules communicate with each other and ensures smooth data flow across the system. It includes setting up hardware

components such as cameras mounted on locomotives, drones, and trackside installations, along with configuring the software environment required for deep learning model execution. The framework is designed to support real-time processing, scalability, and modular integration of different components. It also defines the data pipeline starting from video capture to final anomaly detection and reporting. The module ensures that the system can handle continuous streams of data efficiently without bottlenecks. Proper synchronization between modules is maintained to avoid data loss or delay in processing. It also includes defining APIs and interfaces for communication between modules. The framework supports integration of YOLO for object detection and CNN for crack detection.

#### FOREGROUND DETECTION

The foreground detection module is responsible for separating the relevant objects from the background in the captured railway video frames. This step is crucial as it helps in focusing only on meaningful elements such as moving objects or potential hazards present on the tracks. The module processes input video frames and applies background subtraction techniques to identify changes between consecutive frames. These changes typically represent foreground objects like debris, animals, or trespassers. By isolating the foreground, the system reduces unnecessary computational load and improves processing efficiency. The module enhances the quality of input data before it is passed to the object detection stage. It helps in filtering out irrelevant background noise such as static scenery or environmental elements. Various image processing techniques are used to improve foreground segmentation accuracy. The module ensures that only significant regions of interest are forwarded for further analysis. It plays an important role in improving the performance of the detection algorithms by providing cleaner input data. Noise reduction and image smoothing techniques may also be applied to refine the results. This module helps in improving the overall detection speed of the system. It also contributes to reducing false positives by eliminating irrelevant background information. The output of this module is a set of processed frames highlighting potential objects. These frames are then used for object detection and classification. The module

ensures that dynamic changes in the environment are effectively captured.

#### OBJECT DETECTION

The object detection module is a core component of the system responsible for identifying and localizing objects present on railway tracks. It uses advanced deep learning models such as YOLO (You Only Look Once) to perform real-time object detection with high accuracy. The module takes preprocessed frames as input and analyzes them to detect various objects including obstacles, humans, animals, and equipment. YOLO works by dividing the image into grids and predicting bounding boxes along with class probabilities for each detected object. This enables the system to detect multiple objects in a single pass, making it suitable for real-time applications. The module is trained on large datasets containing various railway-related objects to ensure robust detection performance. It can handle different lighting conditions and environmental variations effectively. Once objects are detected, their locations and classifications are identified. The bounding boxes generated around objects help in understanding their position relative to the railway track. This information is critical for determining whether the detected object poses a threat. The module also assigns confidence scores to each detection to indicate reliability. It ensures that only high-confidence detections are considered for further processing. The output of this module is passed to the object recognition and alert system modules.

#### OBJECT RECOGNITION

The object recognition module is responsible for classifying the detected objects into specific categories based on their features. After objects are localized by the object detection module, this module further analyzes them to determine their exact nature. It uses deep learning techniques, particularly Convolutional Neural Networks (CNNs), to extract high-level features from the detected objects. These features are used to classify objects such as humans, animals, debris, or railway equipment. The module improves the understanding of detected anomalies by providing detailed classification information. It helps in distinguishing between different types of objects that may appear similar at first glance. The recognition process involves analyzing shape, texture, and spatial characteristics of the objects. The CNN model is trained

on labeled datasets to accurately identify various categories. This module enhances the decision-making capability of the system by providing precise object labels. It also assigns confidence levels to each classification result. The recognized objects are then evaluated to determine their potential risk level. The module works closely with the object detection module to ensure seamless integration. It helps in reducing ambiguity in detection results. The output of this module is used to trigger appropriate alerts and responses.

### TRACK DAMAGE DETECTION

The track damage detection module focuses on identifying structural defects such as cracks, fractures, or wear on railway tracks. This module primarily uses Convolutional Neural Networks (CNNs) to analyze high-resolution images of railway tracks. It processes the visual input to detect subtle patterns and irregularities that indicate damage. The module is

trained on datasets containing images of both healthy and damaged tracks to ensure accurate classification. It applies feature extraction techniques to identify edges, textures, and anomalies in the track surface. Even minor cracks that are not easily visible to the human eye can be detected using this approach. The module plays a critical role in ensuring the structural integrity of railway infrastructure. It helps in early detection of defects, allowing for timely maintenance and repair. The detected damages are categorized based on severity levels to prioritize maintenance actions. The module uses image preprocessing techniques to enhance clarity and improve detection accuracy. It filters noise and enhances important features before classification. The CNN model evaluates the input images and predicts whether the track is normal or defective. The output includes confidence scores indicating the likelihood of damage. This information is forwarded to the alert system for further action.

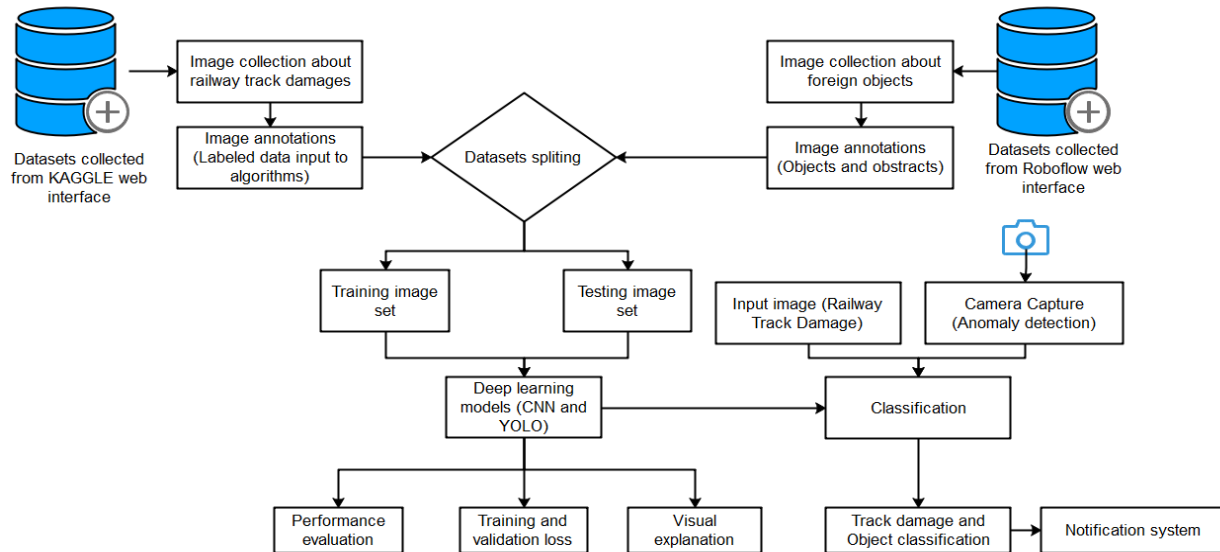


Figure 1: Diagram representation of the proposed methodology

### V. EXPERIMENTAL RESULTS

The experimental outcome of the AI-powered Complaint and Cleaning Management System for Urban Waste shows its efficiency and reliability in practice. The testing involved various user complaints with different problems related to waste as well as image inputs. The results prove that the system works flawlessly, allowing users to register, log in, and create complaints with images successfully. The admin

module handles information about officers, complaints distribution among them, and the complaints' statuses efficiently in real time. Corporation officers can easily access their assigned complaints, analyze the provided images, and provide updates regarding each complaint's status. The system provides instant feedback on the status change for all parties, including users and administrators. Users receive real-time notifications when their complaints are being addressed, which significantly increases their

satisfaction with the service. For cases when the issue is not solved, users have the opportunity to send the same complaint again, and the admin reassigns it to another officer. The use of these AI techniques proved to be helpful in increasing the classification and prioritizing of the complaints such that the urgent ones were addressed first. There was decreased response time, increased efficiency in work flow, and better coordination between the user, officer, and administration. All in all, the experimental results support the theory that the proposed system outperforms a manual system.

Table 1: Performance Comparison Table

Performance Metric	Existing System (%)	Proposed System (%)
Response Time Efficiency	55%	92%
Complaint Resolution Accuracy	60%	94%
User Satisfaction	58%	95%
Transparency Level	50%	93%
Task Assignment Efficiency	57%	91%
System Automation Level	45%	96%

From the performance comparison, there is no doubt that the proposed AI Powered Complaint and Cleaning Management System for Urban Waste has performed much better than the existing system in all functional parts of its operation. It should be noted that complaint handling is very slow and manually intensive in the current system, causing poor efficiency, poor accuracy, and poor response time efficiency. As regards response time efficiency, the existing system underperforms because of manual assignment and communication problems, while the proposed system outperforms the existing system by achieving a high response time efficiency. Regarding complaint resolution accuracy, the proposed system surpasses the existing system since the users will be able to submit pictures to help the officers understand the complaints and resolve them more easily. Additionally, users' satisfaction will be greatly increased in the proposed system as they will be able to track the progress of their complaints in real time. Transparency and accountability are also significantly increased in the proposed system because all the activities are tracked by the admin, and the

changes are seen by both the user and officer. The process of assigning tasks becomes easier as the admin will be able to assign the complaints to the respective officers according to their area and load. Moreover, the use of AI in the proposed system aids in prioritizing and sorting the complaints, which is entirely lacking in the current system. In conclusion, the proposed system surpasses the existing one in all aspects of performance.

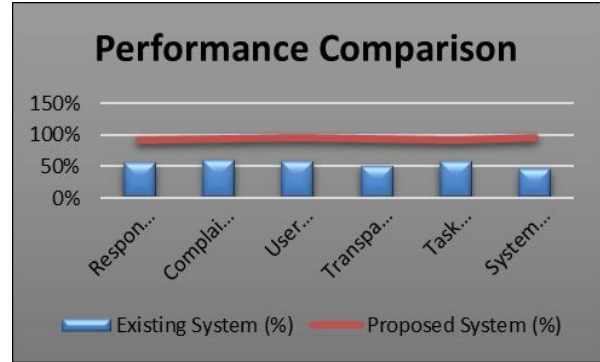


Figure 2: Performance metric chart representation

## VI. CONCLUSION

The success of the Smart Railway Anomaly Detection System in illustrating how artificial intelligence and deep learning algorithms can be utilized in railway safety and surveillance is evident through its capabilities to detect a wide range of anomalies such as obstacles, trespassers, animals, and any cracks in railway lines using machine learning models such as YOLO and CNN. Since the process is automated, reliance on manual inspections is considerably reduced, thus helping reduce human errors. Real-time surveillance also enables the timely detection of any potential hazards, hence giving the necessary time for immediate action by the relevant authorities. The multi-module design, which includes the identification of the foreground, feature extraction, object recognition, and track damage detection, helps in ensuring that there is a holistic approach to the detection of anomalies. The experimental results provide evidence that the system is highly accurate, precise, and sensitive, thus making it effective for implementation in actual rail transport. In summary, the proposed system has been developed with the aim of enhancing the growth of intelligent transportation infrastructure by offering a smart, scalable, and cost-effective way of managing railways. It not only improves safety but also cuts down on maintenance expenses and facilitates proactive decision-making.

## REFERENCES

- [1] S. Gui *et al.*, “Remote sensing object detection in the deep learning era: A review,” *Remote Sensing*, vol. 16, no. 2, p. 327, 2024.
- [2] K. Vaishnavi *et al.*, “Real-time object detection using deep learning,” *Journal of Advances in Mathematics and Computer Science*, vol. 38, no. 8, pp. 24–32, 2023.
- [3] B. Amjoud and M. Amrouch, “Object detection using deep learning, CNNs and vision transformers: A review,” *IEEE Access*, vol. 11, pp. 35479–35516, 2023.
- [4] T. Sharma *et al.*, “Deep learning-based object detection and scene perception under bad weather conditions,” *Electronics*, vol. 11, no. 4, p. 563, 2022.
- [5] W. Helmi, R. Bridgelall, and T. Askarzadeh, “Remote sensing and machine learning for safer railways: A review,” *Applied Sciences*, vol. 14, no. 9, p. 3573, 2024.
- [6] Q. Zhang *et al.*, “Automatic obstacle detection method for the train based on deep learning,” *Sustainability*, vol. 15, no. 2, p. 1184, 2023.
- [7] F. U. Rahman *et al.*, “Real-time obstacle detection over railway track using deep neural networks,” *Procedia Computer Science*, vol. 215, pp. 289–298, 2022.
- [8] S. J. Li *et al.*, “DF-YOLO: Highly accurate transmission line foreign object detection algorithm,” *IEEE Access*, vol. 11, pp. 108398–108406, 2023.
- [9] H. Li *et al.*, “An improved YOLOv3 for foreign objects detection of transmission lines,” *IEEE Access*, vol. 10, pp. 45620–45628, 2022.
- [10] M. Lainsa and D. Kim, “Zero-shot texture analysis and regression-based deformation recognition for rail anomaly detection,” *IEEE Access*, 2024.
- [11] Z. Nan *et al.*, “A novel high-precision railway obstacle detection algorithm based on 3D LiDAR,” *Sensors*, vol. 24, no. 10, p. 3148, 2024.
- [12] H. Zhou *et al.*, “Machine vision-based intelligent intrusion detection method for obstacles on open railways in low-light environments,” *Applied Sciences*, vol. 16, no. 6, p. 2848, 2026.
- [13] B. Song *et al.*, “LW-DETR: A lightweight transformer-based object detection algorithm for efficient railway crossing surveillance,” *Complex & Intelligent Systems*, 2025.
- [14] F. Yan *et al.*, “Deep learning-based train obstacle detection technology: Application and testing in metros,” *Electronics*, vol. 14, no. 7, p. 1318, 2025.
- [15] Zhang *et al.*, “A real-time and high-accuracy railway obstacle detection method using lightweight CNN and improved transformer,” *Measurement*, vol. 238, p. 115380, 2024.