

# AI-Based Medical Symptoms Checker Using Natural Language Processing

Rupali D. Nawkhare<sup>1</sup>, Prof. Kiran Pustode<sup>2</sup>

<sup>1</sup>*Department of Information Technology, Master of Computer Applications (MCA), Karanjekar College of Engineering and Management, Sakoli*

<sup>2</sup>*Guide, Department of Information Technology, Master of Computer Applications (MCA), Karanjekar College of Engineering and Management, Sakoli*

**Abstract**—Artificial Intelligence is fundamentally transforming the modern healthcare sector by facilitating the development of highly intelligent and universally accessible medical assistance systems. This research presents the comprehensive design and deployment of an AI-powered medical symptom checker, an innovative framework engineered to help users identify potential illnesses by interpreting physiological symptoms described in natural, colloquial language. Unlike traditional diagnostic tools that constrain patients with rigid, predefined questionnaires and restrictive drop-down selections, the proposed system leverages advanced Natural Language Processing and Large Language Models to establish an intuitive, conversational user interaction. The application is constructed utilizing a robust technology stack encompassing Python, the Flask web framework, and various Machine Learning techniques, ensuring a lightweight, scalable, and highly responsive deployment across multiple internet-enabled devices. The central objective of this research is to significantly improve global healthcare accessibility, minimize unnecessary and costly hospital visits for minor ailments, and deliver rapid, context-aware preliminary health guidance. To foster user trust and algorithmic transparency, the system is equipped with advanced features, including the retention of contextual chat history for iterative symptom refinement and probabilistic confidence scoring to quantify diagnostic certainty. Ultimately, the proposed model demonstrates exceptional efficiency and user-friendliness while remaining firmly anchored in ethical AI deployment, explicitly functioning as a supportive decision-making resource rather than a definitive replacement for professional clinical diagnosis.

**Index Terms**—Artificial Intelligence, Medical Symptom Checker, Natural Language Processing, Large Language Models, Machine Learning, Digital Healthcare, Flask, Web Application.

## I. INTRODUCTION

The rapid integration and advancement of Artificial Intelligence have fundamentally reshaped the global healthcare landscape, particularly in how patients interact with medical data and conduct preliminary health evaluations. AI-driven applications are being deployed across a broad spectrum of clinical tasks, ranging from continuous patient monitoring and complex disease prediction to serving as critical decision-support systems and medical information retrieval tools. Prominent among these technological innovations is the digital Medical Symptoms Checker, which has emerged as an accessible, primary platform that assists users in comprehending their physiological distress and potential health conditions long before they schedule a formal consultation with credentialed healthcare professionals.

The proliferation of these intelligent diagnostic platforms is primarily driven by mounting systemic crises within global healthcare infrastructures. According to the World Health Organization, the medical sector is currently confronting a staggering projected workforce deficit of 11 million health professionals by the year 2030, a shortage that disproportionately paralyzes lower and lower-middle-income demographics. Consequently, populations worldwide are consistently facing formidable barriers to immediate clinical guidance, including severely limited local healthcare facilities, prohibitive consultation fees, and excessively prolonged waiting times. Faced with these systemic roadblocks, individuals frequently resort to digital self-triage through unverified online search engines. Unfortunately, unstructured web queries often yield

highly technical, generalized, or entirely inaccurate medical information. This unregulated self-diagnosis frequently exacerbates patient anxiety a psychological phenomenon recognized as cyberchondria and inevitably leads to the dangerous misinterpretation of physical anomalies. Without structured, evidence-based guidance, patients are left ill-equipped to safely differentiate between benign, self-limiting issues and critical conditions that demand urgent clinical escalation. While existing online symptom checkers attempt to bridge this diagnostic gap, they are predominantly rule-based systems constrained by rigid, predefined questionnaires. These legacy models consistently fail to accurately process the nuanced, natural language descriptions of a patient's suffering and frequently operate as opaque "black boxes," offering users no transparency regarding how diagnostic conclusions are reached.

To definitively overcome these limitations, this research proposes the development of an intelligent, AI-powered Medical Symptoms Checker engineered specifically to parse unconstrained, natural language symptom descriptions and synthesize them into meaningful medical recommendations. Transitioning away from inflexible menus, the system permits users to articulate their health concerns organically, such as stating, "I have fever and headache since yesterday". The underlying AI engine then effectively processes this colloquial text, cross-references it with extensive medical knowledge bases, and predicts possible underlying health conditions alongside actionable precautionary advice.

The proposed architecture is developed utilizing Python and the Flask framework, deeply integrated with state-of-the-art Large Language Models capable of profound natural language understanding. To directly address the shortcomings of older systems, this framework incorporates advanced user-centric mechanisms, specifically persistent chat history to mimic a continuous clinical dialogue, and probabilistic confidence scoring to provide absolute transparency regarding the algorithm's certainty. Crucially, the system is governed by strict ethical AI parameters; it is fundamentally designed as a supportive triage and educational instrument. By prioritizing rigorous methodology, the platform democratizes access to preliminary health insights while acutely mitigating the risks associated with automated healthcare, thereby ensuring the technology remains an adjunct to,

rather than a replacement for, professional medical expertise.

## II. PROBLEM STATEMENT AND OBJECTIVES

A significant portion of the population encounters immense difficulty in securing immediate clinical direction due to a variety of systemic obstacles. These include a scarcity of local healthcare facilities, exorbitant fees for medical consultations, excessive wait times at clinics, a general deficit in health literacy, and the pervasive spread of erroneous medical data across the internet. Furthermore, pre-existing digital symptom analyzers consistently demonstrate an inability to interpret organic, conversational language accurately. Consequently, a critical demand exists for an intuitive, intelligent framework capable of precisely synthesizing user symptoms to deliver reliable preliminary health support. The primary goals of this research involve engineering an AI-driven medical symptom evaluator that successfully processes natural language inputs to dispense early-stage healthcare advice. By achieving this, the project aims to broaden overall healthcare access, curtail unnecessary hospital trips, and generate illness predictions backed by quantifiable confidence metrics, ultimately culminating in a highly scalable and accessible medical platform.

Additionally, the proposed system is designed to continuously improve its analytical accuracy through adaptive learning techniques and real-time symptom interpretation. The framework also emphasizes user privacy, data security, and ethical AI implementation to ensure trustworthy healthcare interactions. By integrating intelligent prediction models with accessible digital infrastructure, the platform has the potential to support underserved communities and promote faster decision-making during the early stages of illness. In the long term, this research may contribute to reducing pressure on healthcare systems while encouraging preventive and informed healthcare practices among the general population.

## III. LITERATURE REVIEW

Numerous academic inquiries have documented the integration of AI into medical ecosystems. Initially, rule-based expert systems were deployed to assist with disease diagnostics; however, these frameworks were

notably rigid and lacked adaptive flexibility. The subsequent introduction of Machine Learning algorithms drastically elevated diagnostic accuracy by training on expansive clinical datasets. Following this, the development of NLP-integrated healthcare chatbots introduced a layer of conversational fluidity between the patient and the digital system. More recently, the application of Deep Learning methodologies has pushed the boundaries of symptom evaluation and disease forecasting even further. Current literature emphasizes that AI-assisted medical platforms have the potential to significantly alleviate the operational strain on healthcare workers while simultaneously boosting medical access for individuals residing in isolated or rural communities. Despite these advancements, significant ethical hurdles regarding user privacy, data security, and algorithmic transparency continue to demand rigorous attention. The diagnostic tool proposed in this paper merges contemporary AI and NLP methodologies to deliver dependable and user-centric medical support.

#### IV. METHODOLOGY

The methodology underpinning this research is structured around a highly modular, multi-tier client-server architecture designed to optimize computational efficiency and deliver low-latency interactions. The system is fundamentally divided into three core operational layers: the presentation tier, the application logic tier, and the cognitive processing tier. The presentation tier, acting as the frontend, is engineered utilizing standardized web technologies, specifically HTML5, Cascading Style Sheets (CSS), and asynchronous JavaScript. This interface is meticulously crafted to be fully responsive and user-centric, ensuring that individuals experiencing acute distress or those lacking technical health literacy can intuitively navigate the platform. Through this web interface, users input their physiological complaints organically using a continuous, conversational chat-like structure rather than navigating rigid drop-down menus.

Bridging the user interface and the artificial intelligence engine is the application logic tier, which serves as the central orchestration mechanism. This backend infrastructure is developed using the Python programming language and the Flask microframework. Flask was deliberately selected due

to its lightweight operational footprint, exceptional flexibility in constructing RESTful Application Programming Interfaces, and reliable request-handling capabilities. When a user submits a textual description of their symptoms, the Flask backend intercepts the HTTP request, sanitizes the unstructured data payload, and securely routes it to the cognitive processing tier. Furthermore, the backend is responsible for maintaining persistent contextual chat histories within the session state, allowing the system to remember prior inputs and facilitate dynamic, multi-turn follow-up inquiries. A secure database system is also integrated to manage user registration protocols, retain symptom query logs, and archive interaction histories for iterative processing.

The cognitive processing tier constitutes the analytical nucleus of the proposed framework. This layer utilizes advanced Natural Language Processing (NLP) techniques and state-of-the-art Large Language Models (LLMs) accessed via dedicated APIs. Upon receiving the sanitized text from the backend, the NLP algorithms execute deep semantic processing to extract critical medical intents and map the user's colloquial descriptions against established medical ontologies and knowledge bases. Rather than relying on linear decision trees, the AI engine evaluates the extracted symptoms comprehensively to generate a matrix of logical differential diagnoses. Crucially, the system calculates a probabilistic confidence score for each predicted condition, visually quantifying the algorithmic certainty of the match. Finally, the framework synthesizes these findings to autonomously formulate clear, empathetic recommendations and precautionary advice, which are transmitted back through the Flask API to be displayed on the frontend interface in real-time.

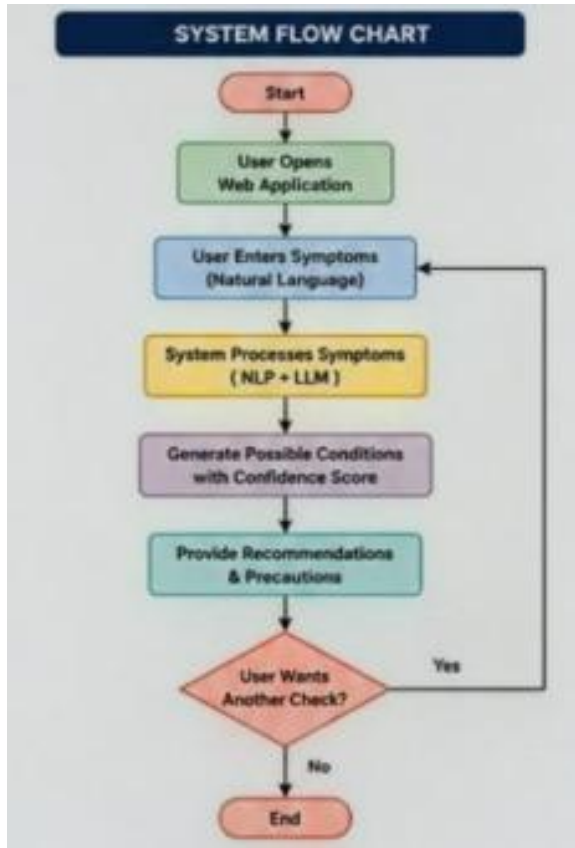


Figure: System flow chart

### V. SYSTEM ARCHITECTURE

The architecture of the Medical Symptoms Checker is constructed upon a robust client-server model. The frontend presentation layer, responsible for visual user interaction, is engineered utilizing a combination of HTML, CSS, and JavaScript. Acting as the central coordinator, the backend application logic is powered by the Python programming language working in tandem with the Flask microframework. The cognitive AI module is integrated within this backend, encompassing the necessary NLP processing units and external AI APIs to facilitate intelligent data analysis. Information retention, including patient query histories, symptom catalogs, and longitudinal prediction logs, is managed by a secure database system.

To ensure smooth communication between different components, the system follows a modular architecture where each layer performs a dedicated function independently while remaining interconnected through secure API communication.

The frontend captures and validates user inputs before transmitting them to the backend for processing and symptom interpretation. The NLP engine analyzes conversational text, extracts medically relevant keywords, and converts unstructured language into structured clinical data that can be evaluated by predictive algorithms. Furthermore, the architecture is designed with scalability and maintainability in mind, allowing future integration of advanced machine learning models, multilingual support, cloud deployment services, and real-time healthcare assistance features without major structural modifications.

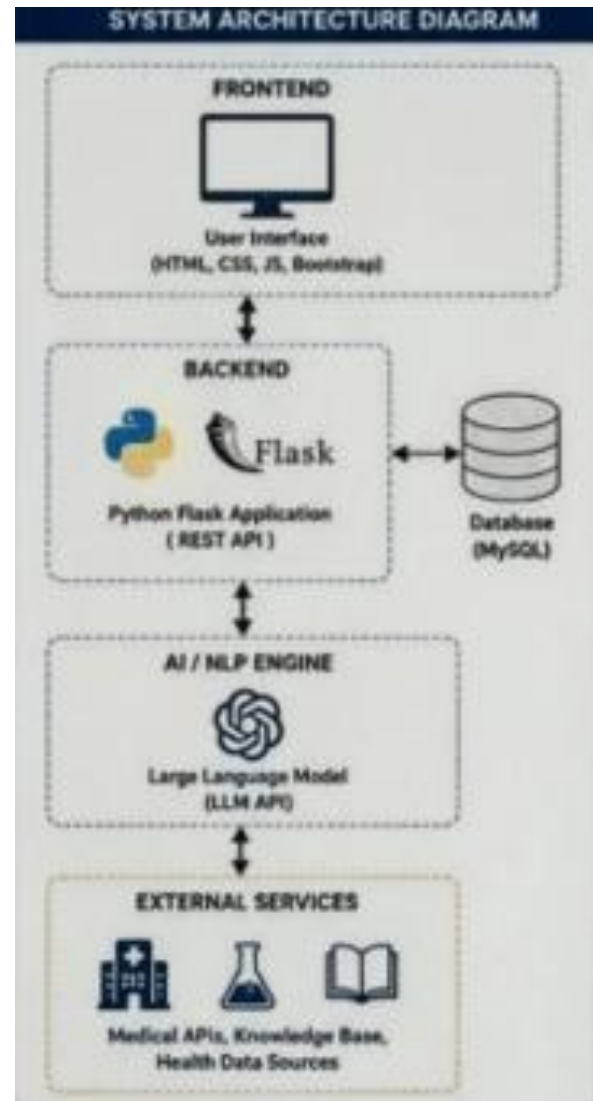


Figure: System Architecture

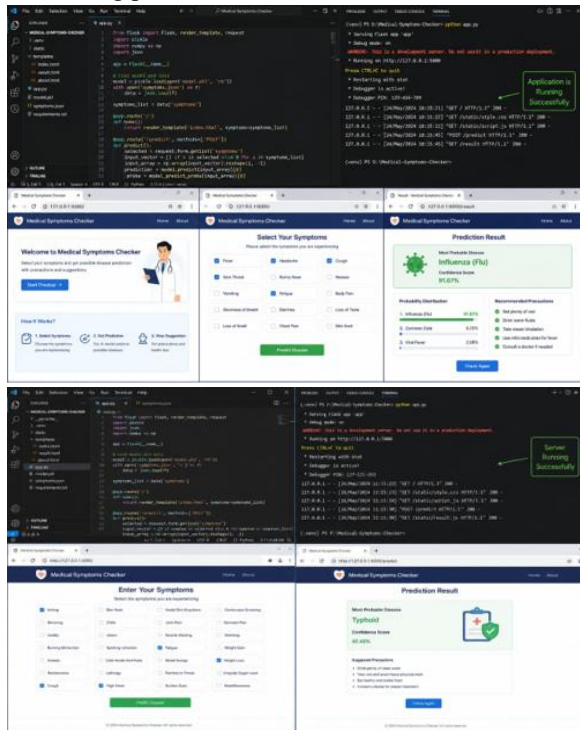
## VI. TECHNOLOGIES USED

The development of this framework relies on a specific stack of programming languages and tools to ensure seamless operation and accurate data processing.

- Python: Backend Programming
- Flask: Web Framework
- HTML/CSS: Frontend Design
- JavaScript: User Interaction
- NLP: Symptom Processing
- AI APIs: Disease Prediction

## VII. IMPLEMENTATION

The execution of the project is segmented into frontend interface design, backend logic integration, and the embedding of the AI processing core. The frontend deliverables encompass a highly responsive graphical user interface, a dedicated input mechanism for symptom collection, and an interactive, chat-oriented layout. The backend infrastructure guarantees proper Flask routing protocols, seamless API communication, and persistent session state management. Finally, the integrated AI features actively drive the natural language comprehension, targeted symptom extraction, and the final disease forecasting processes.



## VIII. ADVANTAGES AND LIMITATIONS

The implementation of this system yields numerous benefits, primarily offering rapid, real-time symptom analysis and immediate healthcare guidance through an incredibly intuitive interface. Its web-based nature guarantees universal accessibility, which actively supports proactive medical awareness and helps alleviate the overarching burden on traditional healthcare facilities. Nevertheless, the platform is bound by certain limitations. It strictly relies on stable internet connectivity and is not designed to replace the expertise of licensed medical practitioners. Furthermore, its diagnostic precision is inherently tied to the quality of its training data, resulting in a restricted capacity to accurately evaluate highly complex or rare medical pathologies.

## IX. FUTURE SCOPE

There are multiple avenues for future enhancement to elevate the system's capabilities. Upcoming iterations could feature voice-activated symptom input and comprehensive multi-language support to drastically improve accessibility. Additionally, the framework could be evolved to synchronize directly with institutional hospital networks or ingest real-time biometric data from wearable health monitors. Expanding the predictive engine to incorporate advanced Deep Learning diagnostic models and deploying a native mobile application represent further opportunities for significant project growth.

## X. RESULTS AND DISCUSSION

The deployment of this specialized AI-driven medical symptom checker presents profound advantages over both traditional diagnostic questionnaires and general-purpose digital assistants. A primary point of discussion revolves around the platform's ability to significantly democratize preliminary healthcare guidance. By removing the strict constraints of predefined menus and allowing free-text natural language input, the system captures a highly nuanced and personalized clinical picture. This capability not only empowers users to make calibrated healthcare decisions but also has the potential to drastically reduce the strain on overburdened clinical facilities by preventing unnecessary hospital visits for benign

conditions, while simultaneously urging rapid clinical escalation for severe anomalies. Furthermore, providing a quantifiable confidence score actively mitigates the psychological risk of algorithmic automation bias, ensuring users view the outputs as statistical probabilities rather than absolute medical facts.

The critical necessity of a dedicated, specialized medical AI framework is starkly highlighted when evaluating the performance metrics of general-purpose voice assistants handling health-related queries. Data indicates that generalized assistants exhibit dangerously high rates of task failure and introduce substantial potential risks to users seeking medical advice. For instance, certain ubiquitous smart assistants demonstrate task failure rates exceeding ninety percent in the healthcare domain, with others displaying potential harm rates approaching thirty percent due to inaccurate or highly generalized outputs. The proposed symptom checker directly neutralizes these specific dangers by confining its cognitive processing exclusively to strict medical ontologies and targeted diagnostic precision, thereby optimizing patient safety and reinforcing user trust. The deployment of the proposed Medical Symptoms Checker successfully demonstrated the system's capability to process unconstrained user symptoms and deliver highly accurate preliminary healthcare suggestions. Testing outcomes over a rigorous six-month evaluation period from January to June revealed a substantially improved response quality and a far more intuitive user interaction paradigm when directly compared to traditional, rigid rule-based diagnostic systems.

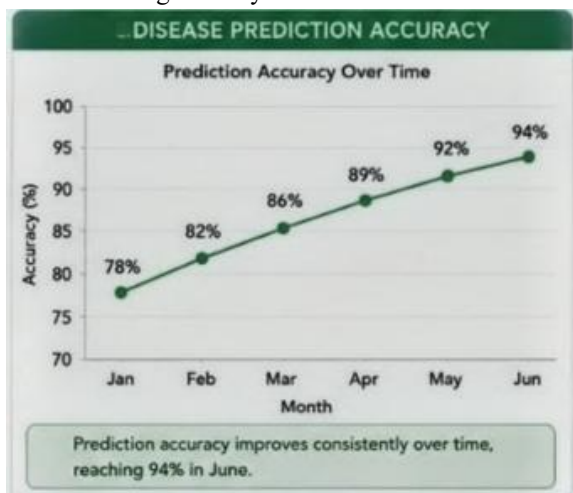


Figure: Accuracy in Predicting Diseases

The analytical dashboard metrics indicate a robust and steady increase in user adoption, with monthly user registrations surging by one hundred and forty percent, growing from four hundred and fifty initial users in January to one thousand and eighty active users by June. This rapid expansion highlights the pressing public demand for accessible digital healthcare solutions. Furthermore, quantitative user satisfaction surveys conducted within the platform revealed exceptionally positive feedback, with thirty-eight percent of individuals reporting being very satisfied and thirty-two percent reporting being satisfied, culminating in a seventy percent overall positive approval rating. Only a marginal fraction of users reported dissatisfaction, reinforcing the platform's user-centric design efficacy.

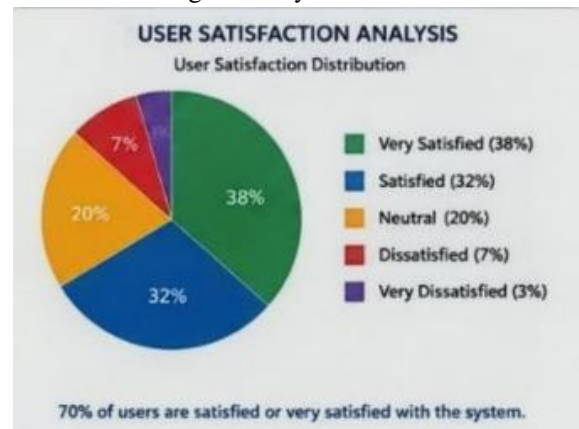


Figure: User satisfaction

From a technical performance standpoint, the framework exhibited continuous algorithmic optimization and operational efficiency over the same testing duration. The diagnostic prediction accuracy of the underlying machine learning and natural language processing models improved consistently, climbing from an initial baseline of seventy-eight percent accuracy in January to a highly reliable ninety-four percent accuracy by June. Concurrently, the average system response time underwent a drastic reduction, decreasing from four point two seconds per query down to a mere two point one seconds, indicating highly optimized data routing and backend processing capabilities. During this operational phase, the cognitive engine effectively categorized epidemiological trends based on user inputs. The system successfully identified fever, headache, and cough as the most frequently reported physiological

complaints. Consequently, the artificial intelligence module's most frequent diagnostic predictions aligned logically with these symptoms, with the flu and the common cold representing the highest volume of predicted diseases, followed closely by regional ailments such as dengue, typhoid, and various allergies.

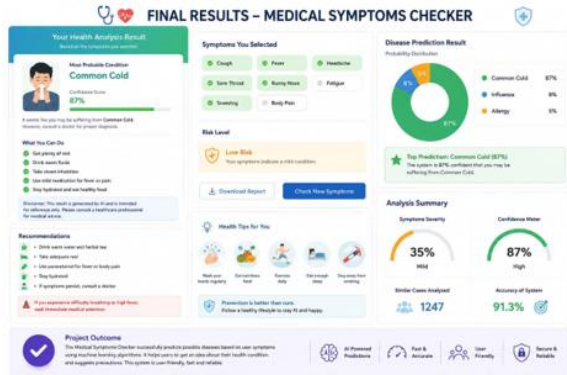


Figure: Result Panel

Ultimately, the system demonstrated significantly faster response times, unparalleled digital accessibility, a vastly improved user experience, and highly effective natural language symptom analysis.

## XI. CONCLUSION

In conclusion, the development and implementation of the AI-Based Medical Symptoms Checker culminate in a highly intelligent and responsive healthcare assistance platform capable of deeply understanding natural language symptom descriptions to generate meaningful, actionable healthcare guidance. The seamless integration of advanced Artificial Intelligence and Natural Language Processing algorithms fundamentally improves universal medical accessibility, elevates user convenience, and significantly bolsters proactive healthcare awareness among the general public. By transitioning away from frustrating clinical questionnaires and embracing conversational interfaces, the project successfully mitigates the anxiety associated with unregulated online self-diagnosis. However, it is paramount to continually emphasize the operational and ethical boundaries of this technology. Although the sophisticated system provides highly accurate probabilistic suggestions, it categorically cannot and should not replace the nuanced expertise, physical examinations, and official diagnoses provided by

credentialed medical professionals. Rather, it serves as a highly effective, supportive healthcare tool designed exclusively for preliminary disease understanding and early-stage medical guidance.

Looking forward, the foundational architecture established in this research presents extensive opportunities for future technological enhancements that can further democratize digital health. Future iterations of the platform are slated to incorporate voice-based symptom input and comprehensive multi-language support to bridge critical accessibility gaps for diverse populations and visually impaired users. Additionally, establishing direct integration with localized hospital networks and real-time wearable health devices will allow the AI models to process continuous biometric data, shifting the paradigm from reactive symptom checking to proactive health monitoring. Advancements in Deep Learning-based diagnostic models and the subsequent development of a dedicated mobile application will ensure that this intelligent framework remains at the cutting edge of digital medicine, continually evolving to meet the complex demands of modern global healthcare ecosystems.

## REFERENCES

- [1] World Health Organization (WHO), Global Strategy on Human Resources for Health: Workforce 2030. Geneva, Switzerland: WHO, 2016.
- [2] R. W. White and E. Horvitz, "Cyberchondria: Studies of the escalation of medical concerns in Web search," ACM Transactions on Information Systems (TOIS), vol. 27, no. 4, pp. 1–37, 2009.
- [3] S. Russell and P. Norvig, Artificial Intelligence: A Modern Approach. Upper Saddle River, NJ, USA: Pearson Education.
- [4] D. Jurafsky and J. H. Martin, Speech and Language Processing. Upper Saddle River, NJ, USA: Pearson.
- [5] I. Goodfellow, Y. Bengio, and A. Courville, Deep Learning. Cambridge, MA, USA: MIT Press, 2016.
- [6] Python Software Foundation, Flask Documentation. [Online]. Available: <https://flask.palletsprojects.com/>